



NATIONAL WORKSHOP TO ADVANCE STATE TMDL PROGRAMS

Evaluating Success: Measuring, Monitoring, and Tracking

Innovations in Tracking from Region 5

Jeff Risberg, Minnesota
Dean Maraldo, EPA Region 5

June 2008



Improving Implementation

Build Quality TMDLs

Develop Implementation
Tracking Tools*

Find Meaningful Indicators*
TMDL/Program Effectiveness

**Implementation
Success**

** Source: TMDL Implementation Tracking Needs Assessment, Current Status and Future Needs for States in Regions 5, 6, and 10 (EPA R5, March 2008)*



Building Quality TMDLs

Quality vs. Quantity

- Future will demand results = restoration
- Strong implementation planning
 - ✓ Cost effectiveness models
 - ✓ Social indicators
 - ✓ 319 IP model
- Looking for “Ripe” watersheds

Implementation Tracking



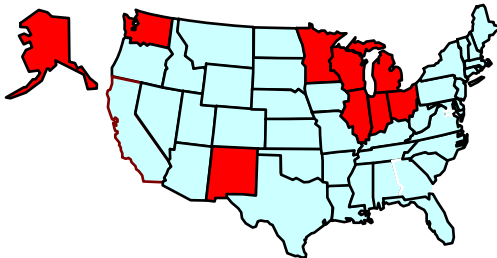
Total Maximum Daily Load (TMDL) Implementation Tracking Needs Assessment

*Current Status and Future Needs for
States in Regions 5, 6, and 10*

March 2008

Prepared For:

U.S. Environmental Protection Agency
Region 5



Background

- States expressed need to focus on implementation tracking
 - ✓ Assess progress towards meeting goals
 - ✓ Plan the use of limited resources towards watershed restoration

Project Goals

- Assess current status of implementation tracking in 9 states
- Determine each state's tracking needs

Implementation Tracking

States' Perspectives on Potential Benefits of a TMDL Tracking System

- Review and evaluate progress
- Quickly generate reports on progress for EPA, legislature, and public
- Provide a central warehouse for all tracking activities
- Most states would like EPA to develop tracking tool

Findings

Next Steps

- EPA and states develop indicators to track implementation
- Pilot implementation tracking frameworks
- Develop implementation tracking tools



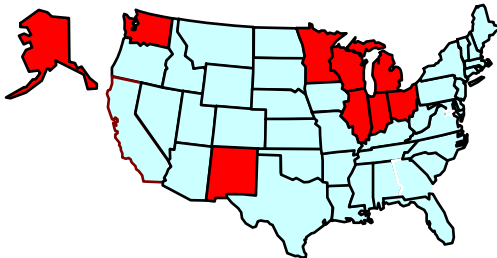
Total Maximum Daily Load (TMDL) Implementation Tracking Needs Assessment

*Current Status and Future Needs for
States in Regions 5, 6, and 10*

March 2008

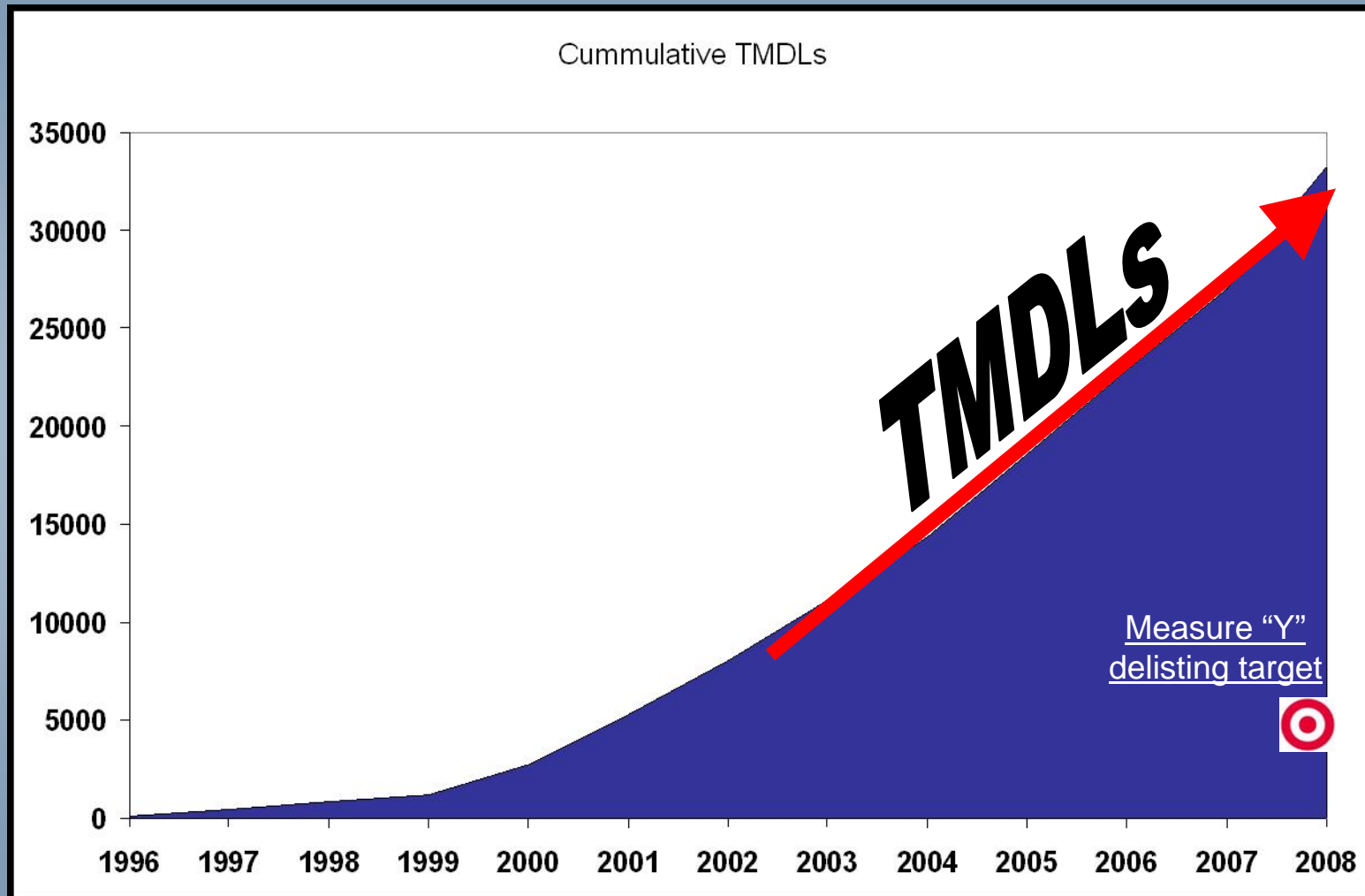
Prepared For:

U.S. Environmental Protection Agency
Region 5



Program Effectiveness

Do current key Measures tell the restoration story?





Program Effectiveness

Example "Pipeline" to Restoration

Assessment

- % of watersheds monitored and assessed
- % of stream sites or miles with citizen volunteers

Planning (TMDLs)

- % locally-led TMDLs
- # of watersheds with completed implementation plans

Implementation

- % adoption of key BMPs and permits
- Social indicators behavioral tracking

Restoration and Protection

- % of watersheds meetings WQS
- WQ trends (watersheds, regions, state)



MN's Clean Water Legacy Act: A New Era of Accountability

- “...establish and report outcome-based performance measures that monitor the progress and effectiveness of protection and restoration”

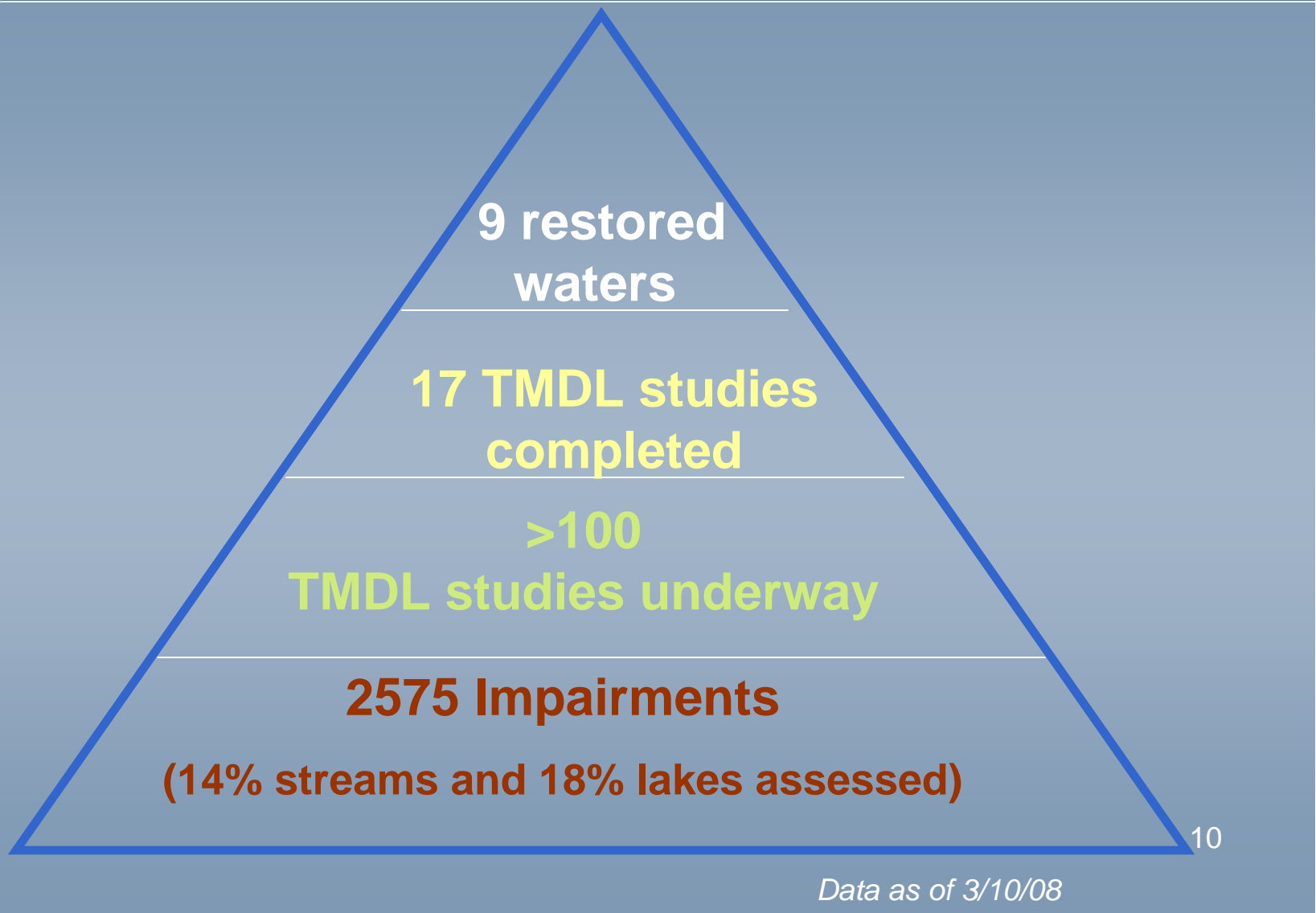


CWLA by the numbers

- **\$25 million** for FY07
- **\$54 million** FY08-09:
 - Monitoring
 - TMDLs
 - Protection
 - Restoration
 - Staffing
- **\$91 million per year:** proposed Constitutional Amendment



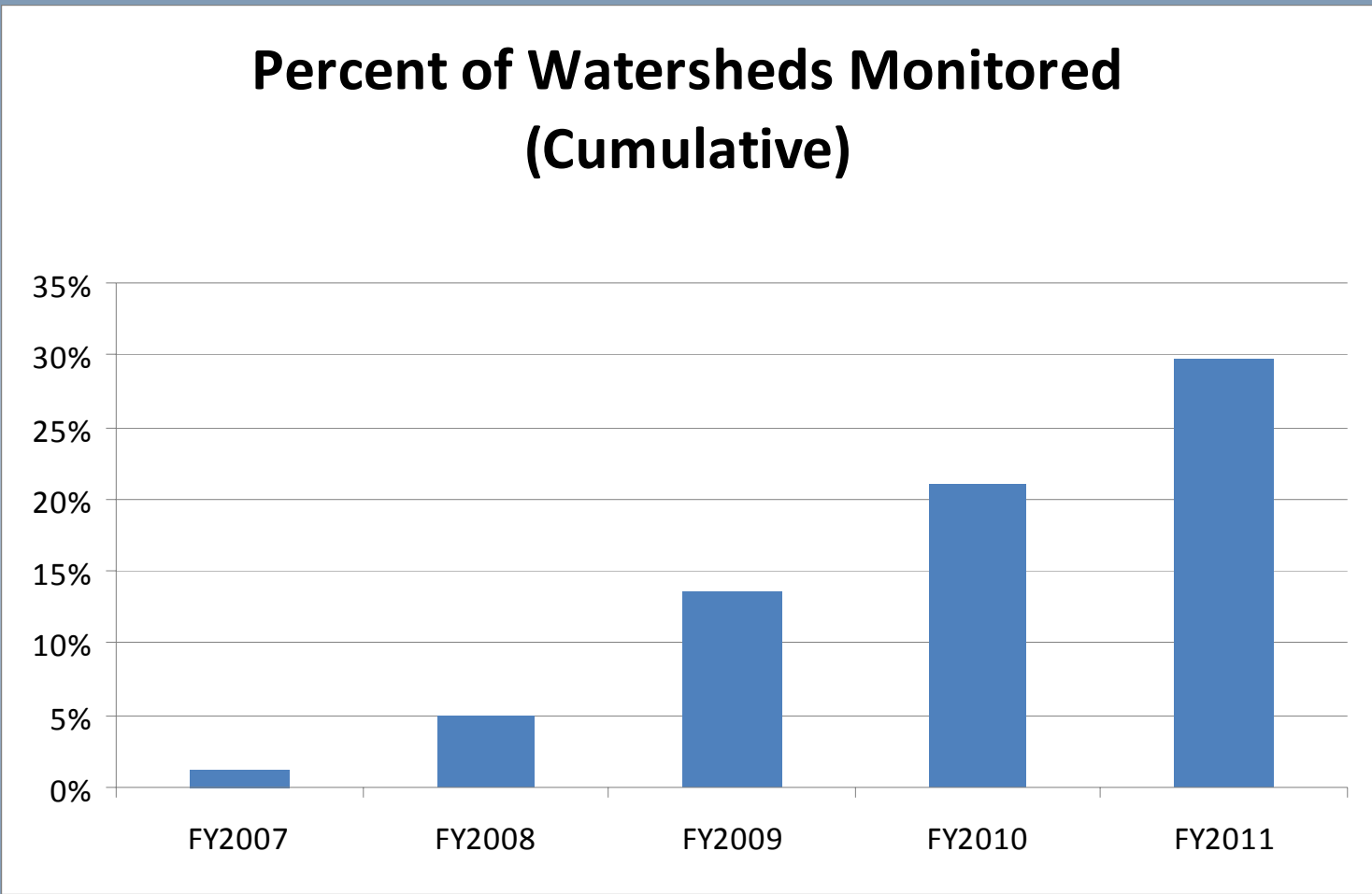
Progress to Date in Developing TMDL Studies in Minnesota





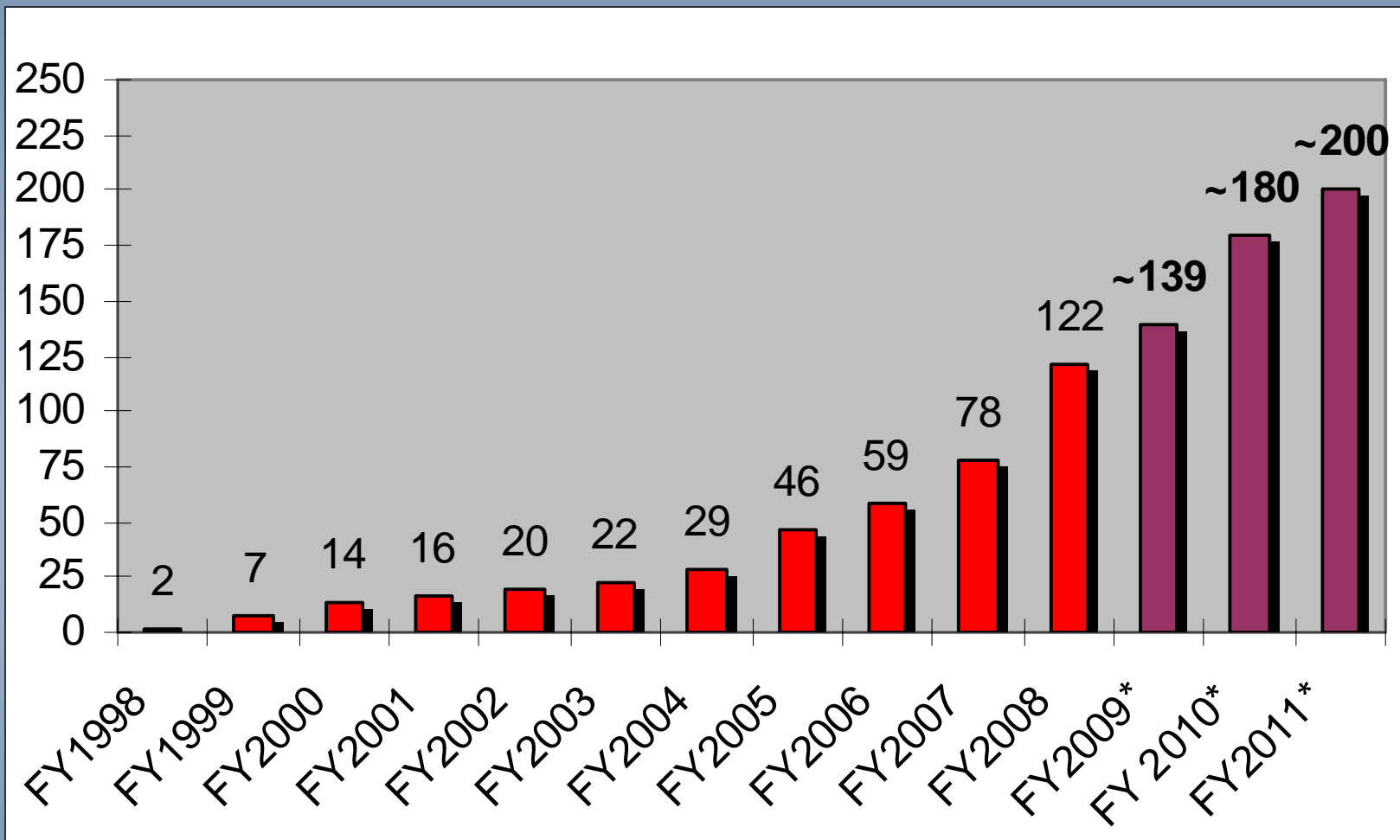
Monitoring ramp-up due to CWLA Funding

Percent of Watersheds Monitored (Cumulative)

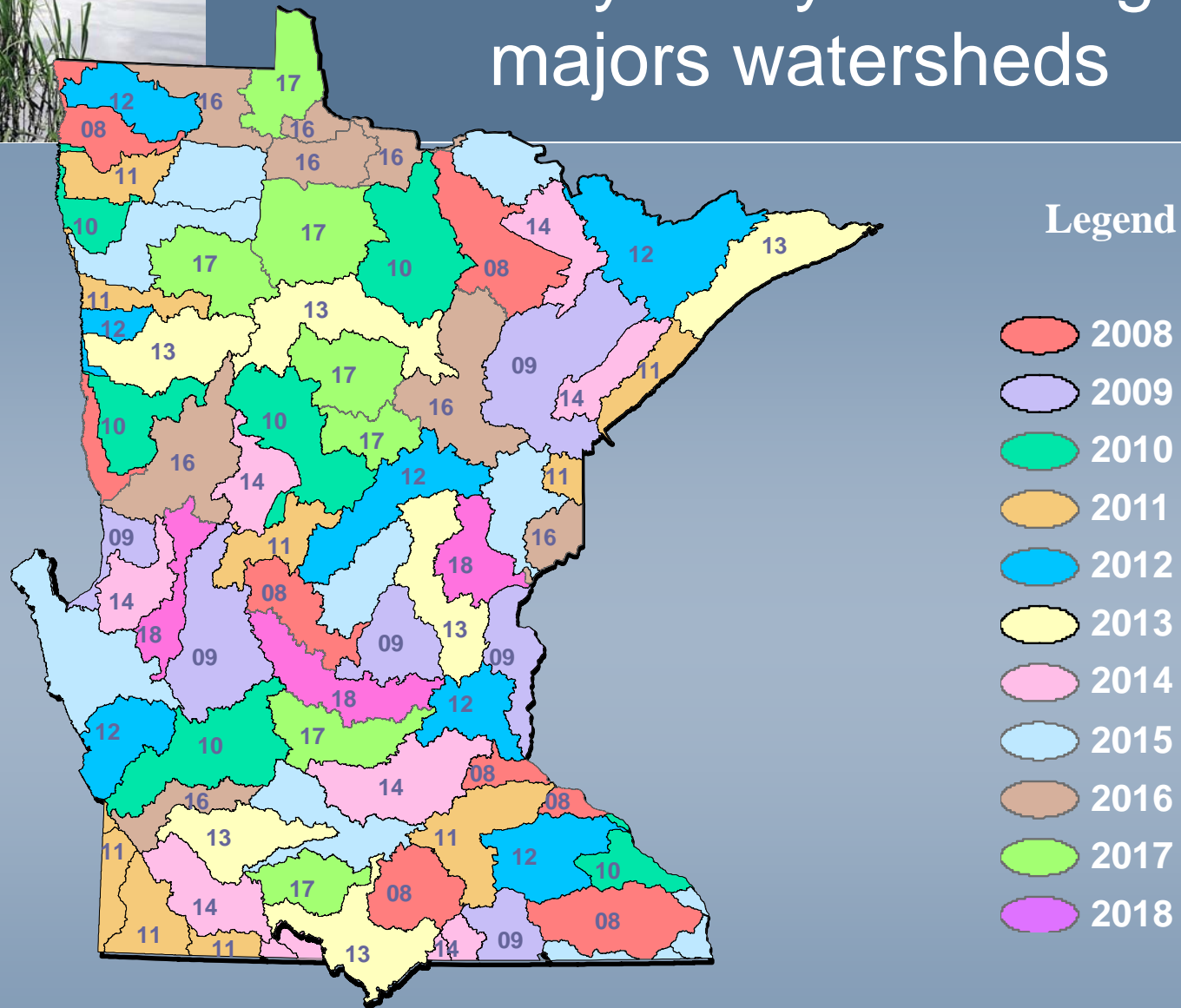




TMDL Project Ramp-up due to CWLA Funding




10 year cycle through the 81 majors watersheds





Developing Program Effectiveness Framework

- Interagency Workgroup for developing Program Effectiveness Framework
 - Led by University of Minnesota
 - Participants:
 - State Agencies
 - Federal Agencies
 - Consulting Community
 - University of Minnesota
 - Clean Water Council



Program Effectiveness Framework



The diagram features a large, light green circular graphic on the left side. Inside this circle, the word "Goals" is written in a white, sans-serif font. To the right of the circle, five horizontal, rounded rectangular callouts are arranged vertically. Each callout is connected to the circle by a thin green line. The callouts contain the following text: "effectively communicate progress and goals achieved", "report on watershed, regional, and statewide scales", "communicate results", "support adaptive management", and "track assessment, TMDL, Implementation and protection efforts". The callouts alternate in background color between white and light green.

Goals


effectively communicate progress and goals achieved

report on watershed, regional, and statewide scales

communicate results

support adaptive management

track assessment, TMDL, Implementation and protection efforts



Program Effectiveness Framework

- 3 Draft Frameworks Developed

- Challenges:

- **Scale:** statewide, regional, watershed, project
- **Time:** progress over short-medium-long term
- **Simplicity:** assessment, TMDLs, restoration, protection, social indicators
- **Communication:** crafting message appropriate for the audience



Key Elements of Program Effectiveness Framework

- Measurement Categories:
 - Organizational Performance
 - Partnerships/Leveraging
 - Social Indicators
 - Environmental Outcomes



Clean Water Legacy Act

Effectiveness Tracking Framework

<i>“Measure Category”</i>				
Geographic Scale	<i>Organizational Performance</i>	<i>Partnerships/leveraging</i>	<i>Environmental Indicators</i>	<i>Social Indicators</i>
State				
Region/ Basin				
Major Watershed (8 digit HUC)				
Project Subwatershed Political Boundaries AUID Other				



For each measure...

1. Timeframe (short, medium, or long term)
2. Who collects the data?
3. Is the measure an output or outcome?
4. What part of the Impaired Waters process is this a part of?
 - A. Monitoring and Assessment
 - B. TMDL/watershed planning
 - C. Implementation
 1. non-regulated (non point source)
 2. regulated (point source)
5. Protection or Restoration?



Example measure

“# and % of 8-digit HUC watersheds monitored and assessed”

Category: *Organizational Performance*

1. Short term to long term
2. State (PCA)
3. output
4. Monitoring and Assessment
5. Both protection and restoration

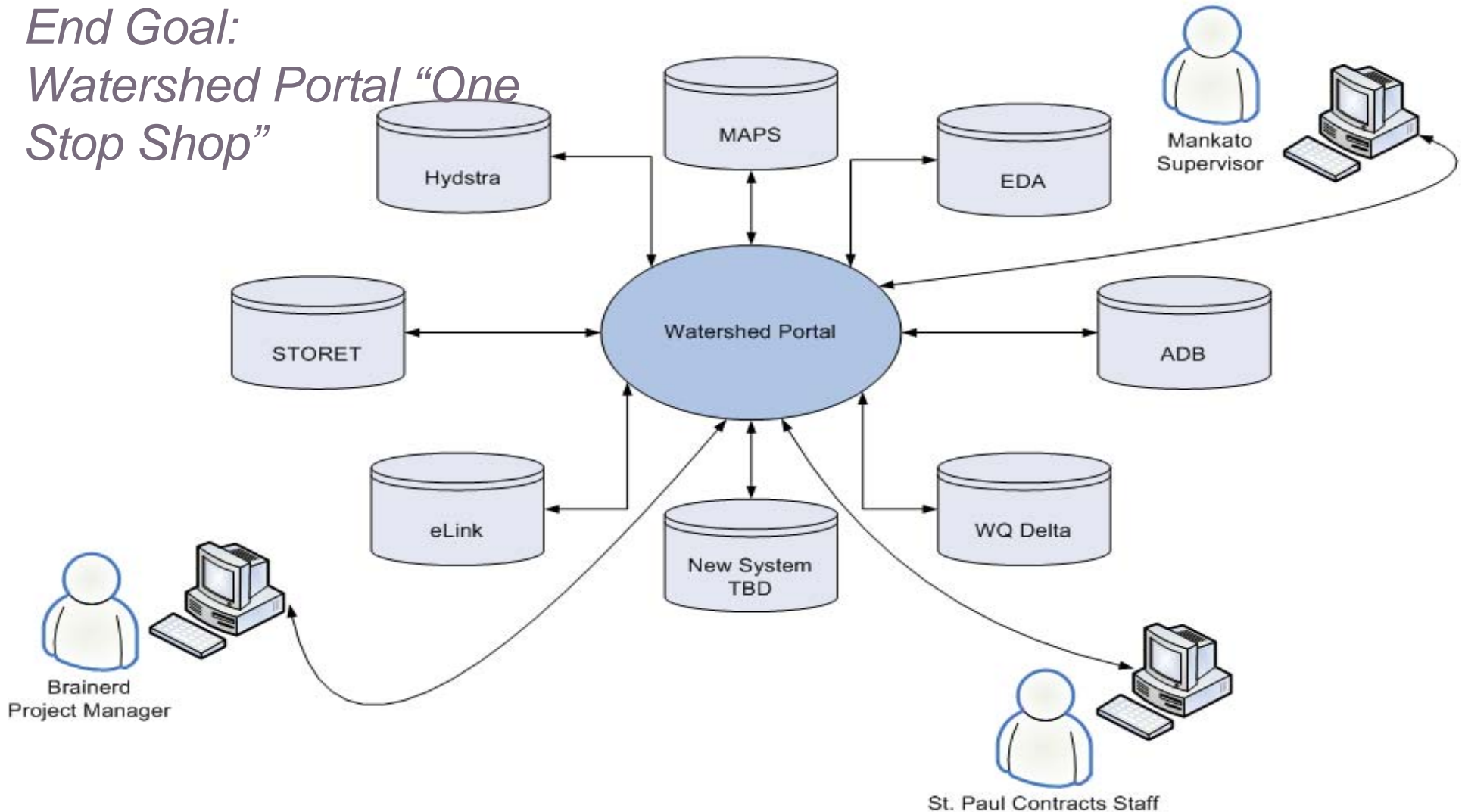


Project Closure

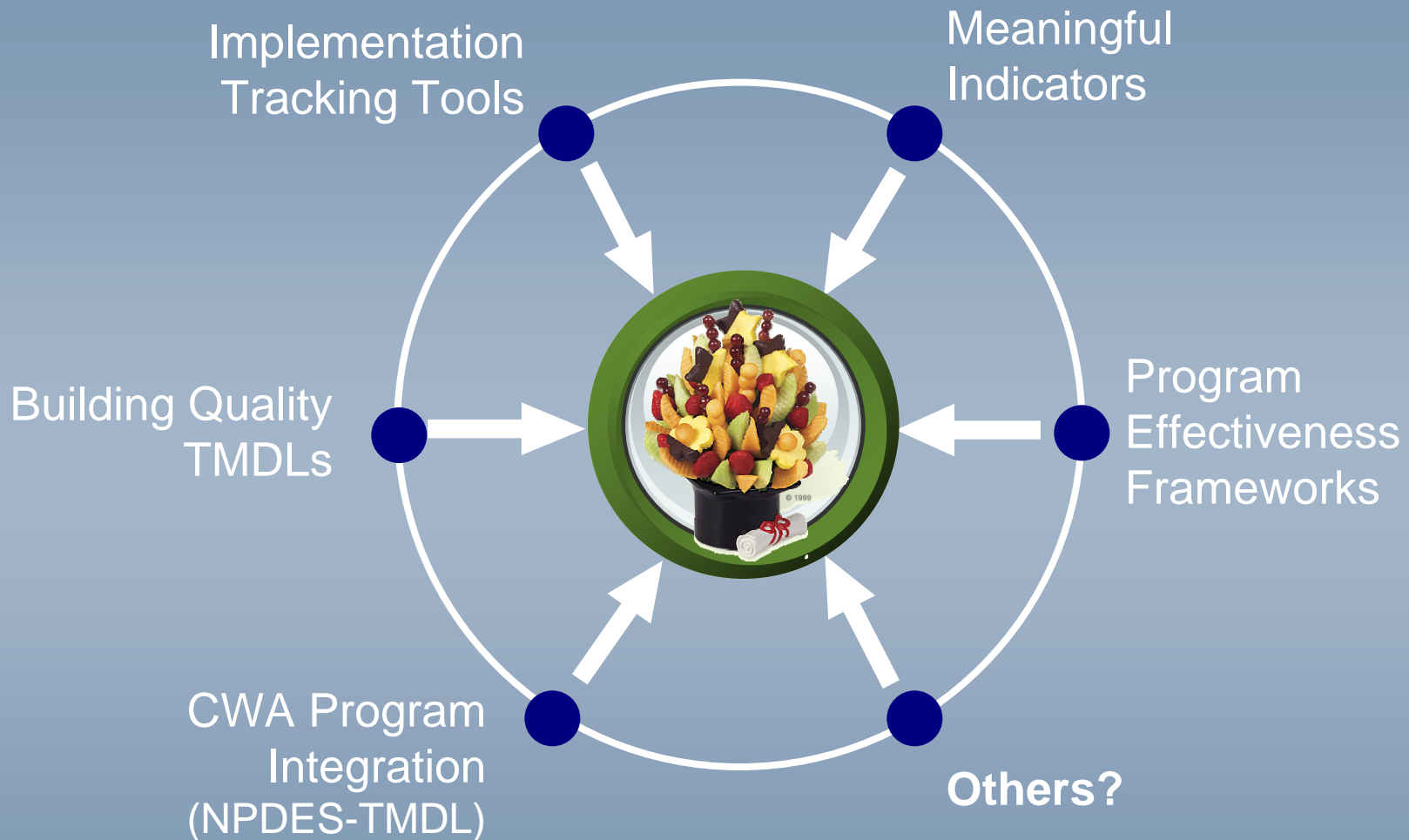
- Final Report: draft at the end of June/beginning of July
- State agencies will take the framework back to their respective staff, develop additional measures, and populate
- Possibility of one more meeting in the fall, to finalize guiding measures and conduct gaps analysis

Tracking the Framework: Database Integration Project

*End Goal:
Watershed Portal "One
Stop Shop"*



Improving Implementation



A photograph of a person running on a sandy beach towards a large body of water. In the background, there is a house with a red roof and a dense forest of trees. The sky is blue with some clouds. The text "Questions?" is overlaid in the center of the image.

Questions?