



MASSACHUSETTS NUTRIENT MANAGEMENT 2013

Data Sources

Physical and Administrative

HYDROGRAPHY: USGS/MassGIS, 1:25,000 or less. Hydrography from the USGS National Hydrography Database except within public watersupply watersheds where the resolution is approximately 1:10,000.

DRAINAGE BASINS: USGS WRD/MassGIS/MA DEP DWP, 1:24,000. MassGIS digitized mylar manuscripts with subbasins, interpreted by USGS WRD and compiled onto paper 1:24,000 USGS topographic quad maps. Major basins were generated by aggregating sub-basins.

POLITICAL BOUNDARIES: MassGIS. This political boundary datalayer has been created from latitude and longitude coordinates found in the 68 volume harbor and Lands Commission Town Boundary Atlas.

Monitoring and Assessment

2010 Integrated List of Waters: (305(b)(303(d)) data layer is the spatial representation of the river, lake, and estuary segments assessed and summarized in the Massachusetts Year 2010 Integrated List of Waters report to the EPA developed pursuant to sections 305(b) ("Water Quality Inventory") and 303(d) of the Federal Clean Water Act. Line work based on: USGS 1:25,000 Topographic Maps, NOAA Charts at various scales, and the "Planimetry of Harbors for the 1984 305(b) Report". Find more detailed info at www.mass.gov/mgis.

CSO Abatement - Depicts waters receiving CSO discharges that are regulated by the Commonwealth in accordance with 314 CMR 3.00, 314 CMR 2.00, 310 CMR 41.00. Map depicts CSO receiving waters designated in 314 CMR 4.

Permitting and Regulation

DRAFT NPDES Discharges Locations: This map only shows NPDES discharges which are required to monitor for nitrogen and phosphorus. Mapped by DEP based on permit information using USGS topographic maps and orthophotos. All locations are draft. Please contact the MassDEP GIS Program for more information.

Phase II NPDES MS4 - The extent of regulated MS4 communities in Massachusetts is based on the extent of Urban areas as identified by the 2010 census - for criteria see <http://www.nado.org/census-bureau-defines-urban-areas-for-2010-census/>.

No Discharge Area (NDA) - The map depicts the 2012 extent of "No Discharge Areas" in Massachusetts which are designated bodies of water that prohibits the discharge of treated and untreated boat sewage. Federal Law prohibits the discharge of untreated sewage from vessels within all navigable waters of the U. S., which include territorial seas within three miles of shore. Source US EPA <http://www.epa.gov/region1/eco/nods/crg/> and The Massachusetts Office of Coastal Zone Management (CZM) <http://www.mass.gov/czm/informations.htm>.

TMDL & Wastewater Planning

Nutrient TMDL Projects - Map depicts the extent and status of Nutrient Total Maximum Daily Loads (TMDLs) for impaired waters. Nutrient TMDLs establishes a maximum amount of nutrient (total nitrogen or total phosphorus) that a water body can accept and still meet water quality standards. TMDLs set waste load and load allocations for sources to meet the TMDL. Individual TMDL reports that define the extent of area covered in the map are posted at <http://www.mass.gov/dep/water/resources/tmdls.htm#info>.

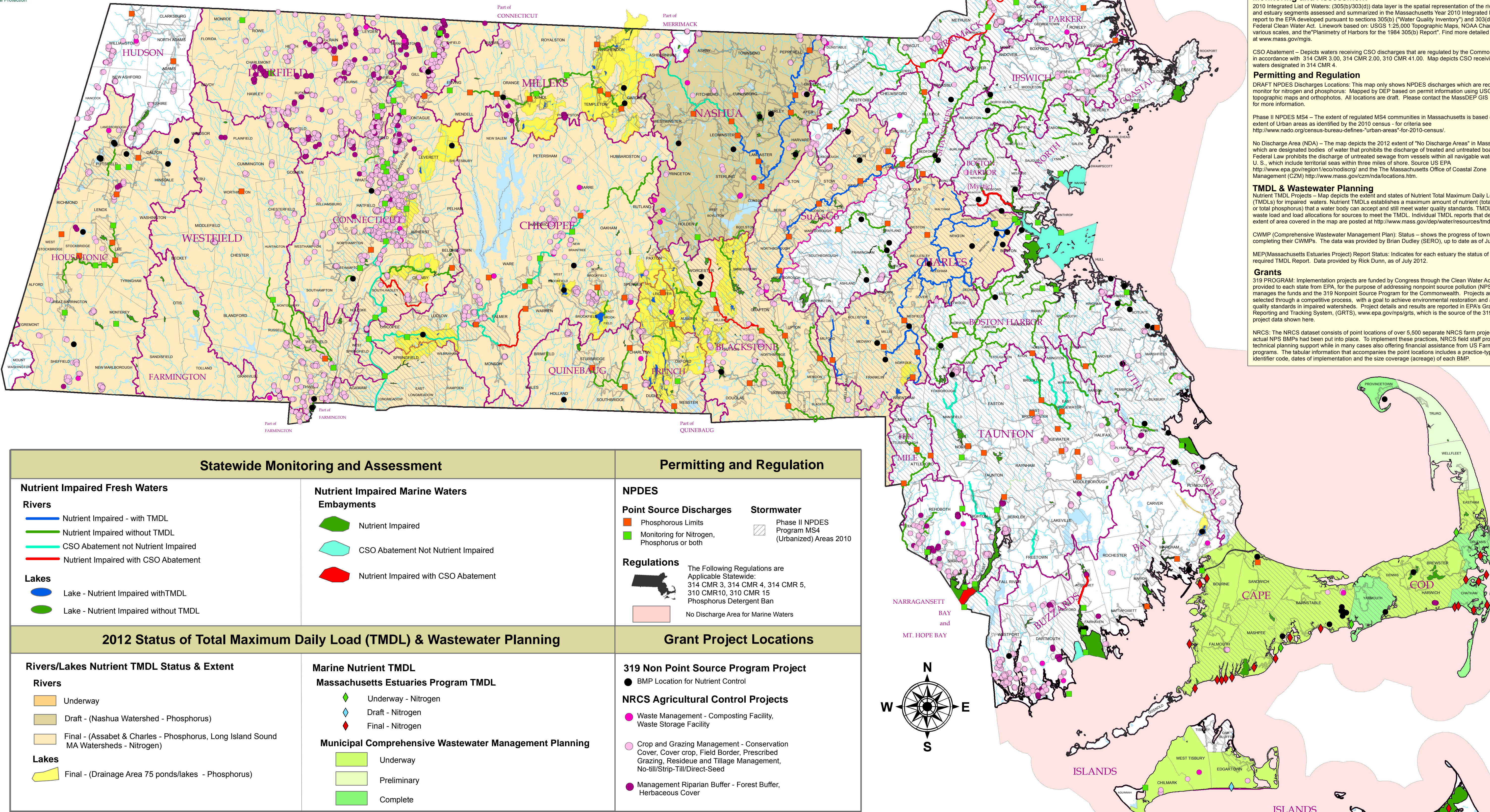
CWMP (Comprehensive Wastewater Management Plan) Status - Shows the progress of towns in completing their CWMPs. The data was provided by Brian Dudley (SERO), up to date as of July 2012.

MEP (Massachusetts Estuaries Project) Report Status: Indicates for each estuary the status of their required TMDL Report. Data provided by Rick Dunn, as of July 2012.

Grants

319 PROGRAM: Implementation projects are funded by Congress through the Clean Water Act. Funds are provided to each state from EPA, for the purpose of addressing nonpoint source pollution (NPS). MassDEP manages the funds and the 319 Nonpoint Source Program for the Commonwealth. Projects are annually selected through a competitive process, with a goal to achieve environmental restoration and attain water quality standards in impaired watersheds. Project details and results are reported in EPA's Grant Reporting and Tracking System, (GRTS), www.epa.gov/wps/grts, which is the source of the 319 project data shown here.

NRCS: The NRCS dataset consists of point locations of over 5,500 separate NRCS farm projects where actual NPS BMPs had been put into place. To implement these practices, NRCS field staff provides technical planning support while in many cases also offering financial assistance from US Farm Bill programs. The tabular information that accompanies the point locations includes a practice-type identifier code, dates of implementation and the size coverage (acreage) of each BMP.



<p align="center">Statewide Monitoring and Assessment</p> <p>Nutrient Impaired Fresh Waters</p> <p>Rivers</p> <ul style="list-style-type: none"> Nutrient Impaired - with TMDL Nutrient Impaired without TMDL CSO Abatement not Nutrient Impaired Nutrient Impaired with CSO Abatement <p>Lakes</p> <ul style="list-style-type: none"> Lake - Nutrient Impaired with TMDL Lake - Nutrient Impaired without TMDL 		<p>Nutrient Impaired Marine Waters Embayments</p> <ul style="list-style-type: none"> Nutrient Impaired CSO Abatement Not Nutrient Impaired Nutrient Impaired with CSO Abatement 		<p align="center">Permitting and Regulation</p> <p>NPDES</p> <p>Point Source Discharges</p> <ul style="list-style-type: none"> Phosphorous Limits Monitoring for Nitrogen, Phosphorus or both <p>Stormwater</p> <ul style="list-style-type: none"> Phase II NPDES Program MS4 (Urbanized) Areas 2010 <p>Regulations</p> <p>The Following Regulations are Applicable Statewide:</p> <ul style="list-style-type: none"> 314 CMR 3, 314 CMR 4, 314 CMR 5, 310 CMR10, 310 CMR 15 Phosphorus Detergent Ban No Discharge Area for Marine Waters 	
<p align="center">2012 Status of Total Maximum Daily Load (TMDL) & Wastewater Planning</p> <p>Rivers/Lakes Nutrient TMDL Status & Extent</p> <p>Rivers</p> <ul style="list-style-type: none"> Underway Draft - (Nashua Watershed - Phosphorus) Final - (Assabet & Charles - Phosphorus, Long Island Sound MA Watersheds - Nitrogen) <p>Lakes</p> <ul style="list-style-type: none"> Final - (Drainage Area 75 ponds/lakes - Phosphorus) 		<p>Grant Project Locations</p> <p>319 Non Point Source Program Project</p> <ul style="list-style-type: none"> BMP Location for Nutrient Control <p>NRCS Agricultural Control Projects</p> <ul style="list-style-type: none"> Waste Management - Composting Facility, Waste Storage Facility Crop and Grazing Management - Conservation Cover, Cover crop, Field Border, Prescribed Grazing, Residue and Tillage Management, No-till/Strip-Till/Direct-Seed Management Riparian Buffer - Forest Buffer, Herbaceous Cover 			
<p>Marine Nutrient TMDL Massachusetts Estuaries Program TMDL</p> <ul style="list-style-type: none"> Underway - Nitrogen Draft - Nitrogen Final - Nitrogen <p>Municipal Comprehensive Wastewater Management Planning</p> <ul style="list-style-type: none"> Underway Preliminary Complete 					

Map Produced by: MassDEP Bureau of Resource Protection Division of Watershed Management. This map is for illustrative purposes only. It represents the best statewide data available at the date of printing. If you have questions about any of the data shown on this map, please contact the Division of Watershed Management, Worcester Office.

