

Maryland's Chesapeake and Coastal Bays Trust Fund

SFY12 Trust Fund Priority Areas

Evaluating Priority Areas:

- Priority funding areas for FY12 were developed using information from the USGS SPARROW model and local knowledge and expertise. Coastal Bays watersheds were prioritized based on the expertise of scientists in that region.
 - SPARROW is a regression-based model for regional interpretation of water quality monitoring data. SPARROW discriminates which watersheds are likely to contribute the highest nutrient and sediment loads to the Chesapeake Bay.
 - The Biological Restoration Initiative (BRI) targeting identifies biologically impaired waters that demonstrate a high potential for removal from Maryland's 303(d) list of impaired waters. Their selection is based on evaluation using the Biological Listing Methodology results listed in Maryland's 2008 Integrated Report, which sets a threshold for degradation within Maryland's non-tidal freshwater streams using the index of biotic integrity (IBI) scores from sampled fish and benthic communities. These watersheds have been targeted primarily for 319(h) grant program, which has a goal of delisting impaired surface waters.
 - The Atlantic Coastal Bay watersheds were selected based on the pattern of trajectories of the water quality index (dissolved oxygen, chlorophyll a, total nitrogen, total phosphorus) between 2001-2006 (http://ian.umces.edu/press/books/publication/93/shifting_sands_environmental_and_cultural_change_in_maryland_s_coastal_bays_2009-06-08/).
- Agricultural and urbanized watersheds were evaluated separately to identify the highest nutrient loading areas. For urban watersheds developed lands were analyzed, while agricultural watersheds were separated into cropland and animal production systems.

Ranking of Priority Areas:

- High priority watersheds with the top 10% delivered yields for both nitrogen and phosphorus were selected using the U.S. Geological Survey's SPARROW model. The top 10% delivered yielding areas for developed land, top 10% for fertilizer and top 10% for manure were combined to represent the high priority watersheds for urban, cropland and animal production, respectively.
- Medium priority watersheds have the top 25% delivered yields for nitrogen and phosphorus to the Chesapeake Bay. The top 25% delivered yielding areas for developed land, top 25% for fertilizer, and top 25% for manure were combined to represent the medium priority watersheds for urban, cropland and animal production, respectively.
- Low priority watersheds are the lowest 75% delivered nitrogen and phosphorus, in the Chesapeake Bay drainage area.

Atlantic Coastal Bays:

- Improving or stable trajectories are occurring north of the Ocean City inlet and degrading trajectories are occurring south of the Ocean City inlet. Seagrass abundance has rapidly declined in Chincoteague Bay and water turbidity has increased. Based on the trajectories and the expertise of scientists in that region, Chincoteague Bay is designated as a high priority area while the remaining Coastal Bays watersheds are low priority areas.

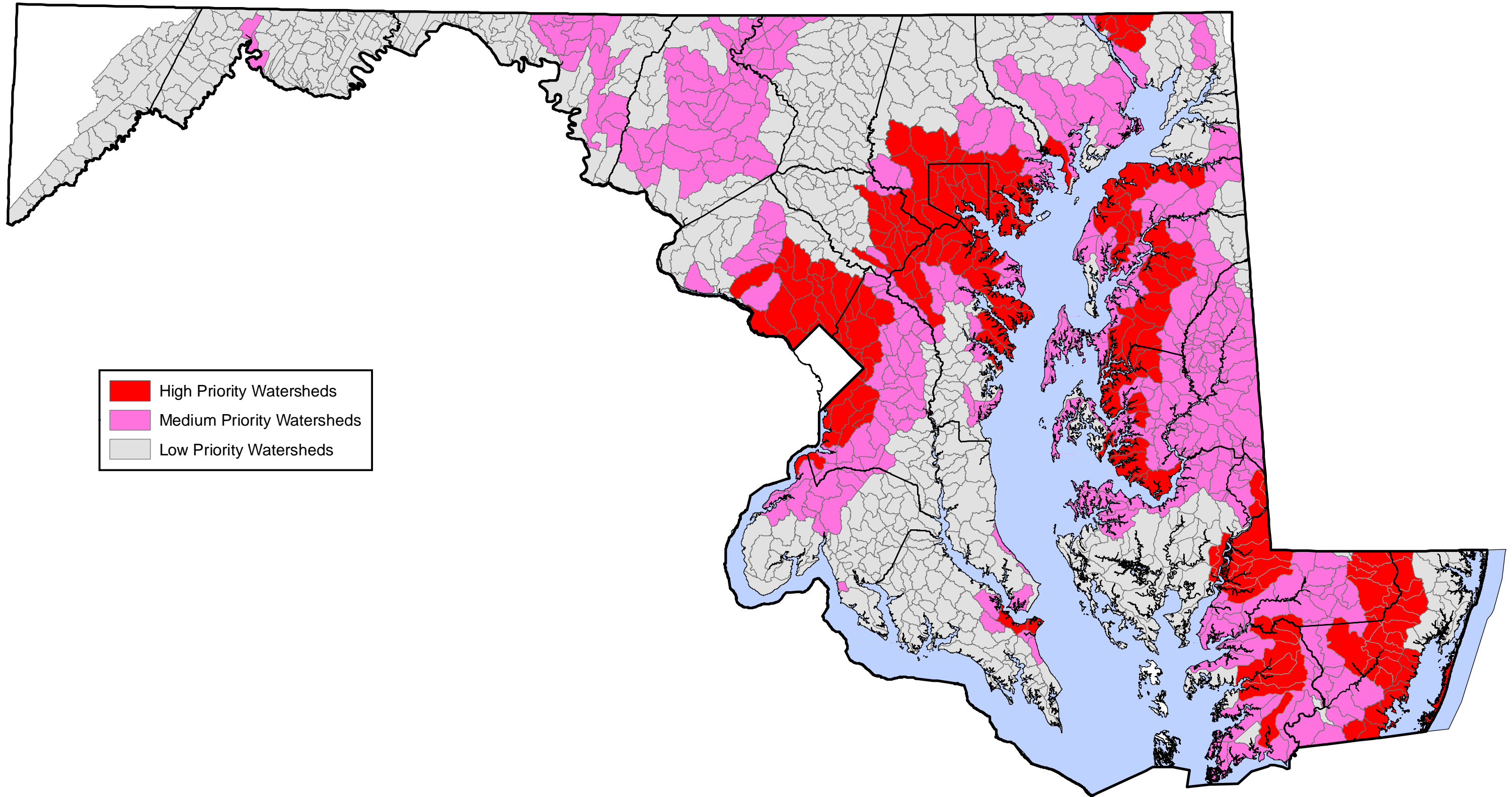
Additional Information:

- Watersheds outside of the Chesapeake and Coastal Bay watersheds are not included in the Bay Trust Fund legislation.
- BayStat will annually implement a technically sound geographic targeting of watersheds that are both in greatest need of non-point source pollution reduction for local water quality conditions and which have the greatest water quality impacts on the mainstem of the Chesapeake Bay. This prioritization will change over time as conditions change, basins improve, and scientific targeting methods improve. Finer scale geographic targeting to further improve nutrient reduction efficiencies within the identified Tributary Basins will be applied as available and appropriate.

For more information about SPARROW:

<http://water.usgs.gov/nawqa/sparrow/chesbay/ches.html>

Trust Fund Priority Geographic Areas

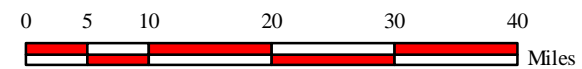


- High Priority Watersheds
- Medium Priority Watersheds
- Low Priority Watersheds



Maryland Department of Natural Resources
Natural Resources Information Services
580 Taylor Ave. E-2 Annapolis, MD 21401
410-260-8753 or 1-877-620-8DNR x8753
dnr.maryland.gov
DNR February 2010

Martin O'Malley
Governor
Anthony G. Brown
Lt. Governor
John R. Griffin
Secretary



PRIORITY AREAS BY 12-DIGIT WATERSHED

| 12-Digit Code | 8-Digit Code | 8-Digit Name | Strategy Basin | County | Priority | BRI |
|---------------|--------------|----------------------|---------------------|----------|----------|-----|
| 021202030344 | 02120203 | Octoraro Creek | UPPER WESTERN SHORE | CE | High | |
| 021202030345 | 02120203 | Octoraro Creek | UPPER WESTERN SHORE | CE | High | |
| 021202030346 | 02120203 | Octoraro Creek | UPPER WESTERN SHORE | CE | High | |
| 021202030347 | 02120203 | Octoraro Creek | UPPER WESTERN SHORE | CE | High | |
| 021202040335 | 02120204 | Conowingo Dam Susq R | UPPER WESTERN SHORE | CE | High | |
| 021301060671 | 02130106 | Chincoteague Bay | Coastal Bays | WO | High | |
| 021301060672 | 02130106 | Chincoteague Bay | Coastal Bays | WO | High | |
| 021301060673 | 02130106 | Chincoteague Bay | Coastal Bays | WO | High | |
| 021301060674 | 02130106 | Chincoteague Bay | Coastal Bays | WO | High | |
| 021301060675 | 02130106 | Chincoteague Bay | Coastal Bays | WO | High | |
| 021301060676 | 02130106 | Chincoteague Bay | Coastal Bays | WO | High | |
| 021301060677 | 02130106 | Chincoteague Bay | Coastal Bays | WO | High | |
| 021301060678 | 02130106 | Chincoteague Bay | Coastal Bays | WO | High | |
| 021301060679 | 02130106 | Chincoteague Bay | Coastal Bays | WO | High | |
| 021301060680 | 02130106 | Chincoteague Bay | Coastal Bays | WO | High | |
| 021302010621 | 02130201 | Pocomoke Sound | LOWER EASTERN SHORE | SO | High | |
| 021302020635 | 02130202 | Lower Pocomoke River | LOWER EASTERN SHORE | WO | High | |
| 021302020636 | 02130202 | Lower Pocomoke River | LOWER EASTERN SHORE | WO | High | |
| 021302020637 | 02130202 | Lower Pocomoke River | LOWER EASTERN SHORE | WO | High | |
| 021302020638 | 02130202 | Lower Pocomoke River | LOWER EASTERN SHORE | WO | High | |
| 021302020639 | 02130202 | Lower Pocomoke River | LOWER EASTERN SHORE | WO | High | |
| 021302030640 | 02130203 | Upper Pocomoke River | LOWER EASTERN SHORE | WO | High | |
| 021302030641 | 02130203 | Upper Pocomoke River | LOWER EASTERN SHORE | WI,WO | High | |
| 021302030642 | 02130203 | Upper Pocomoke River | LOWER EASTERN SHORE | WO | High | |
| 021302030643 | 02130203 | Upper Pocomoke River | LOWER EASTERN SHORE | WO | High | |
| 021302030644 | 02130203 | Upper Pocomoke River | LOWER EASTERN SHORE | WI,WO | High | |
| 021302030645 | 02130203 | Upper Pocomoke River | LOWER EASTERN SHORE | WI,WO | High | |
| 021302030646 | 02130203 | Upper Pocomoke River | LOWER EASTERN SHORE | WI,WO | High | |
| 021302030647 | 02130203 | Upper Pocomoke River | LOWER EASTERN SHORE | WI,WO | High | |
| 021302030648 | 02130203 | Upper Pocomoke River | LOWER EASTERN SHORE | WI | High | |
| 021302030649 | 02130203 | Upper Pocomoke River | LOWER EASTERN SHORE | WI,WO | High | |
| 021302030650 | 02130203 | Upper Pocomoke River | LOWER EASTERN SHORE | WI,WO | High | |
| 021302030651 | 02130203 | Upper Pocomoke River | LOWER EASTERN SHORE | WI,WO | High | |
| 021302030652 | 02130203 | Upper Pocomoke River | LOWER EASTERN SHORE | WI,WO | High | |
| 021302030653 | 02130203 | Upper Pocomoke River | LOWER EASTERN SHORE | WI | High | |
| 021302030654 | 02130203 | Upper Pocomoke River | LOWER EASTERN SHORE | WI,WO | High | |
| 021302030655 | 02130203 | Upper Pocomoke River | LOWER EASTERN SHORE | WI | High | |
| 021302040666 | 02130204 | Dividing Creek | LOWER EASTERN SHORE | WI,WO | High | |
| 021302050667 | 02130205 | Nassawango Creek | LOWER EASTERN SHORE | WI,WO | High | |
| 021302080658 | 02130208 | Manokin River | LOWER EASTERN SHORE | SO | High | |
| 021302080659 | 02130208 | Manokin River | LOWER EASTERN SHORE | SO | High | |
| 021302080660 | 02130208 | Manokin River | LOWER EASTERN SHORE | SO | High | |
| 021302080661 | 02130208 | Manokin River | LOWER EASTERN SHORE | SO | High | |
| 021303030563 | 02130303 | Wicomico Creek | LOWER EASTERN SHORE | SO,WI | High | |
| 021303030564 | 02130303 | Wicomico Creek | LOWER EASTERN SHORE | SO,WI | High | |
| 021303030565 | 02130303 | Wicomico Creek | LOWER EASTERN SHORE | SO,WI,WO | High | |
| 021303050574 | 02130305 | Nanticoke River | LOWER EASTERN SHORE | WI | High | |
| 021303050575 | 02130305 | Nanticoke River | LOWER EASTERN SHORE | DO,WI | High | |
| 021303050576 | 02130305 | Nanticoke River | LOWER EASTERN SHORE | DO,WI | High | |
| 021303050577 | 02130305 | Nanticoke River | LOWER EASTERN SHORE | WI | High | |
| 021303050578 | 02130305 | Nanticoke River | LOWER EASTERN SHORE | DO,WI | High | |
| 021303050579 | 02130305 | Nanticoke River | LOWER EASTERN SHORE | DO | High | |
| 021303050580 | 02130305 | Nanticoke River | LOWER EASTERN SHORE | WI | High | |
| 021303050581 | 02130305 | Nanticoke River | LOWER EASTERN SHORE | WI | High | |
| 021303050582 | 02130305 | Nanticoke River | LOWER EASTERN SHORE | DO,WI | High | |
| 021303050583 | 02130305 | Nanticoke River | LOWER EASTERN SHORE | WI | High | |
| 021303050584 | 02130305 | Nanticoke River | LOWER EASTERN SHORE | DO,WI | High | |
| 021303050587 | 02130305 | Nanticoke River | LOWER EASTERN SHORE | DO,WI | High | |

PRIORITY AREAS BY 12-DIGIT WATERSHED

| | | | | | |
|--------------|----------|-----------------------|---------------------|----------|------|
| 021303050588 | 02130305 | Nanticoke River | LOWER EASTERN SHORE | DO,WI | High |
| 021304030458 | 02130403 | Lower Choptank | CHOPTANK | DO,TA | High |
| 021304030459 | 02130403 | Lower Choptank | CHOPTANK | DO,TA | High |
| 021304030460 | 02130403 | Lower Choptank | CHOPTANK | TA | High |
| 021304030461 | 02130403 | Lower Choptank | CHOPTANK | TA | High |
| 021304030463 | 02130403 | Lower Choptank | CHOPTANK | DO,TA | High |
| 021304030465 | 02130403 | Lower Choptank | CHOPTANK | TA | High |
| 021305020438 | 02130502 | Miles River | UPPER EASTERN SHORE | QA,TA | High |
| 021305020439 | 02130502 | Miles River | UPPER EASTERN SHORE | QA,TA | High |
| 021305020440 | 02130502 | Miles River | UPPER EASTERN SHORE | TA | High |
| 021305020441 | 02130502 | Miles River | UPPER EASTERN SHORE | TA | High |
| 021305030432 | 02130503 | Wye River | UPPER EASTERN SHORE | QA,TA | High |
| 021305030433 | 02130503 | Wye River | UPPER EASTERN SHORE | QA | High |
| 021305030434 | 02130503 | Wye River | UPPER EASTERN SHORE | TA | High |
| 021305030435 | 02130503 | Wye River | UPPER EASTERN SHORE | QA,TA | High |
| 021305030436 | 02130503 | Wye River | UPPER EASTERN SHORE | QA,TA | High |
| 021305030437 | 02130503 | Wye River | UPPER EASTERN SHORE | QA,TA | High |
| 021305050391 | 02130505 | Lower Chester River | UPPER EASTERN SHORE | QA | High |
| 021305060407 | 02130506 | Langford Creek | UPPER EASTERN SHORE | KE | High |
| 021305060408 | 02130506 | Langford Creek | UPPER EASTERN SHORE | KE | High |
| 021305060409 | 02130506 | Langford Creek | UPPER EASTERN SHORE | KE | High |
| 021305070396 | 02130507 | Corsica River | UPPER EASTERN SHORE | QA | High |
| 021305070397 | 02130507 | Corsica River | UPPER EASTERN SHORE | QA | High |
| 021305080398 | 02130508 | Southeast Creek | UPPER EASTERN SHORE | QA | High |
| 021305080399 | 02130508 | Southeast Creek | UPPER EASTERN SHORE | QA | High |
| 021305080400 | 02130508 | Southeast Creek | UPPER EASTERN SHORE | QA | High |
| 021305080401 | 02130508 | Southeast Creek | UPPER EASTERN SHORE | QA | High |
| 021305080402 | 02130508 | Southeast Creek | UPPER EASTERN SHORE | QA | High |
| 021305080403 | 02130508 | Southeast Creek | UPPER EASTERN SHORE | QA | High |
| 021305080404 | 02130508 | Southeast Creek | UPPER EASTERN SHORE | QA | High |
| 021305090411 | 02130509 | Middle Chester River | UPPER EASTERN SHORE | KE | High |
| 021305090412 | 02130509 | Middle Chester River | UPPER EASTERN SHORE | KE,QA | High |
| 021306100353 | 02130610 | Sassafras River | UPPER EASTERN SHORE | CE,KE | High |
| 021306100355 | 02130610 | Sassafras River | UPPER EASTERN SHORE | CE,KE | High |
| 021306110349 | 02130611 | Stillpond-Fairlee | UPPER EASTERN SHORE | KE | High |
| 021306110350 | 02130611 | Stillpond-Fairlee | UPPER EASTERN SHORE | KE | High |
| 021306110351 | 02130611 | Stillpond-Fairlee | UPPER EASTERN SHORE | KE | High |
| 021306110352 | 02130611 | Stillpond-Fairlee | UPPER EASTERN SHORE | KE | High |
| 021308010293 | 02130801 | Gunpowder River | UPPER WESTERN SHORE | BA,HA | High |
| 021308030295 | 02130803 | Bird River | UPPER WESTERN SHORE | BA | High |
| 021308070291 | 02130807 | Middle River - Browns | UPPER WESTERN SHORE | BA | High |
| 021309011038 | 02130901 | Back River | PATAPSCO/BACK | BA | High |
| 021309011039 | 02130901 | Back River | PATAPSCO/BACK | BA,BC | High |
| 021309011040 | 02130901 | Back River | PATAPSCO/BACK | BA,BC | High |
| 021309011041 | 02130901 | Back River | PATAPSCO/BACK | BA,BC | High |
| 021309011042 | 02130901 | Back River | PATAPSCO/BACK | BA,BC | High |
| 021309031006 | 02130903 | Baltimore Harbor | PATAPSCO/BACK | AA,BA,BC | High |
| 021309031007 | 02130903 | Baltimore Harbor | PATAPSCO/BACK | AA,BA,BC | High |
| 021309031008 | 02130903 | Baltimore Harbor | PATAPSCO/BACK | AA,BC | High |
| 021309031009 | 02130903 | Baltimore Harbor | PATAPSCO/BACK | AA | High |
| 021309031010 | 02130903 | Baltimore Harbor | PATAPSCO/BACK | AA,BC | High |
| 021309041032 | 02130904 | Jones Falls | PATAPSCO/BACK | BC | High |
| 021309041033 | 02130904 | Jones Falls | PATAPSCO/BACK | BA,BC | High |
| 021309041034 | 02130904 | Jones Falls | PATAPSCO/BACK | BA,BC | High |
| 021309041035 | 02130904 | Jones Falls | PATAPSCO/BACK | BA,BC | High |
| 021309041036 | 02130904 | Jones Falls | PATAPSCO/BACK | BA | High |
| 021309041037 | 02130904 | Jones Falls | PATAPSCO/BACK | BA | High |
| 021309051043 | 02130905 | Gwynns Falls | PATAPSCO/BACK | BA,BC | High |
| 021309051044 | 02130905 | Gwynns Falls | PATAPSCO/BACK | BA,BC | High |

PRIORITY AREAS BY 12-DIGIT WATERSHED

| | | | | | |
|--------------|----------|-----------------------|---------------------|-------------|------|
| 021309051045 | 02130905 | Gwynns Falls | PATAPSCO/BACK | BA | High |
| 021309061011 | 02130906 | Patapsco River L N Br | PATAPSCO/BACK | AA,BA | High |
| 021309061012 | 02130906 | Patapsco River L N Br | PATAPSCO/BACK | AA,BA,BC | High |
| 021309061013 | 02130906 | Patapsco River L N Br | PATAPSCO/BACK | AA,HO | High |
| 021309061014 | 02130906 | Patapsco River L N Br | PATAPSCO/BACK | AA,HO | High |
| 021309061015 | 02130906 | Patapsco River L N Br | PATAPSCO/BACK | HO | High |
| 021309061016 | 02130906 | Patapsco River L N Br | PATAPSCO/BACK | AA,BA,HO,BC | High |
| 021309061017 | 02130906 | Patapsco River L N Br | PATAPSCO/BACK | BA,HO | High |
| 021310011003 | 02131001 | Magothy River | LOWER WESTERN SHORE | AA | High |
| 021310011005 | 02131001 | Magothy River | LOWER WESTERN SHORE | AA | High |
| 021310020996 | 02131002 | Severn River | LOWER WESTERN SHORE | AA | High |
| 021310020997 | 02131002 | Severn River | LOWER WESTERN SHORE | AA | High |
| 021310030989 | 02131003 | South River | LOWER WESTERN SHORE | AA | High |
| 021310030990 | 02131003 | South River | LOWER WESTERN SHORE | AA | High |
| 021310030991 | 02131003 | South River | LOWER WESTERN SHORE | AA | High |
| 021311010871 | 02131101 | Patuxent River lower | PATUXENT | CA,SM | High |
| 021311010872 | 02131101 | Patuxent River lower | PATUXENT | CA,SM | High |
| 021311050946 | 02131105 | Little Patuxent River | PATUXENT | AA,PG | High |
| 021311050948 | 02131105 | Little Patuxent River | PATUXENT | AA,HO | High |
| 021311050949 | 02131105 | Little Patuxent River | PATUXENT | AA | High |
| 021311050950 | 02131105 | Little Patuxent River | PATUXENT | HO | High |
| 021311050951 | 02131105 | Little Patuxent River | PATUXENT | HO | High |
| 021311050952 | 02131105 | Little Patuxent River | PATUXENT | AA,HO | High |
| 021311050953 | 02131105 | Little Patuxent River | PATUXENT | HO | High |
| 021311050954 | 02131105 | Little Patuxent River | PATUXENT | HO | High |
| 021311050955 | 02131105 | Little Patuxent River | PATUXENT | HO | High |
| 021311050956 | 02131105 | Little Patuxent River | PATUXENT | HO | High |
| 021311050957 | 02131105 | Little Patuxent River | PATUXENT | HO | High |
| 021402010794 | 02140201 | Potomac River U tidal | MIDDLE POTOMAC | PG | High |
| 021402010796 | 02140201 | Potomac River U tidal | MIDDLE POTOMAC | PG | High |
| 021402010797 | 02140201 | Potomac River U tidal | MIDDLE POTOMAC | PG | High |
| 021402020844 | 02140202 | Potomac River MO Cnty | MIDDLE POTOMAC | MO | High |
| 021402020845 | 02140202 | Potomac River MO Cnty | MIDDLE POTOMAC | MO | High |
| 021402020848 | 02140202 | Potomac River MO Cnty | MIDDLE POTOMAC | MO | High |
| 021402030800 | 02140203 | Piscataway Creek | MIDDLE POTOMAC | PG | High |
| 021402030802 | 02140203 | Piscataway Creek | MIDDLE POTOMAC | PG | High |
| 021402040805 | 02140204 | Oxon Creek | MIDDLE POTOMAC | PG | High |
| 021402050808 | 02140205 | Anacostia River | MIDDLE POTOMAC | PG | High |
| 021402050809 | 02140205 | Anacostia River | MIDDLE POTOMAC | DC | High |
| 021402050811 | 02140205 | Anacostia River | MIDDLE POTOMAC | PG | High |
| 021402050814 | 02140205 | Anacostia River | MIDDLE POTOMAC | PG | High |
| 021402050815 | 02140205 | Anacostia River | MIDDLE POTOMAC | PG | High |
| 021402050816 | 02140205 | Anacostia River | MIDDLE POTOMAC | PG | High |
| 021402050818 | 02140205 | Anacostia River | MIDDLE POTOMAC | MO,PG | High |
| 021402050821 | 02140205 | Anacostia River | MIDDLE POTOMAC | MO,PG | High |
| 021402050822 | 02140205 | Anacostia River | MIDDLE POTOMAC | PG | High |
| 021402050823 | 02140205 | Anacostia River | MIDDLE POTOMAC | PG | High |
| 021402050824 | 02140205 | Anacostia River | MIDDLE POTOMAC | PG | High |
| 021402050825 | 02140205 | Anacostia River | MIDDLE POTOMAC | MO,PG | High |
| 021402050826 | 02140205 | Anacostia River | MIDDLE POTOMAC | MO,PG | High |
| 021402050827 | 02140205 | Anacostia River | MIDDLE POTOMAC | MO | High |
| 021402050828 | 02140205 | Anacostia River | MIDDLE POTOMAC | MO | High |
| 021402050829 | 02140205 | Anacostia River | MIDDLE POTOMAC | MO | High |
| 021402060831 | 02140206 | Rock Creek | MIDDLE POTOMAC | MO | High |
| 021402060831 | 02140206 | Rock Creek | MIDDLE POTOMAC | MO | High |
| 021402060831 | 02140206 | Rock Creek | MIDDLE POTOMAC | MO | High |
| 021402060831 | 02140206 | Rock Creek | MIDDLE POTOMAC | MO | High |
| 021402060836 | 02140206 | Rock Creek | MIDDLE POTOMAC | MO | High |
| 021402060837 | 02140206 | Rock Creek | MIDDLE POTOMAC | MO | High |

Y

PRIORITY AREAS BY 12-DIGIT WATERSHED

| | | | | | | |
|--------------|----------|----------------------|---------------------|----------|--------|---|
| 021402060838 | 02140206 | Rock Creek | MIDDLE POTOMAC | MO | High | |
| 021402060839 | 02140206 | Rock Creek | MIDDLE POTOMAC | MO | High | |
| 021402060840 | 02140206 | Rock Creek | MIDDLE POTOMAC | MO | High | |
| 021402070841 | 02140207 | Cabin John Creek | MIDDLE POTOMAC | MO | High | |
| 021405020203 | 02140502 | Antietam Creek | UPPER POTOMAC | WA | High | |
| 021202010318 | 02120201 | L Susquehanna River | UPPER WESTERN SHORE | CE,HA | Medium | Y |
| 021202010319 | 02120201 | L Susquehanna River | UPPER WESTERN SHORE | CE,HA | Medium | Y |
| 021202040336 | 02120204 | Conowingo Dam Susq R | UPPER WESTERN SHORE | CE,HA | Medium | |
| 021202040337 | 02120204 | Conowingo Dam Susq R | UPPER WESTERN SHORE | CE,HA | Medium | |
| 021202040338 | 02120204 | Conowingo Dam Susq R | UPPER WESTERN SHORE | HA | Medium | |
| 021202050342 | 02120205 | Broad Creek | UPPER WESTERN SHORE | HA | Medium | |
| 021302010619 | 02130201 | Pocomoke Sound | LOWER EASTERN SHORE | SO | Medium | |
| 021302020624 | 02130202 | Lower Pocomoke River | LOWER EASTERN SHORE | SO,WO | Medium | |
| 021302020625 | 02130202 | Lower Pocomoke River | LOWER EASTERN SHORE | SO | Medium | |
| 021302020626 | 02130202 | Lower Pocomoke River | LOWER EASTERN SHORE | SO,WO | Medium | |
| 021302020627 | 02130202 | Lower Pocomoke River | LOWER EASTERN SHORE | SO,WO | Medium | |
| 021302020628 | 02130202 | Lower Pocomoke River | LOWER EASTERN SHORE | WO | Medium | |
| 021302020631 | 02130202 | Lower Pocomoke River | LOWER EASTERN SHORE | WO | Medium | |
| 021302020632 | 02130202 | Lower Pocomoke River | LOWER EASTERN SHORE | WO | Medium | |
| 021302020633 | 02130202 | Lower Pocomoke River | LOWER EASTERN SHORE | WO | Medium | |
| 021302020634 | 02130202 | Lower Pocomoke River | LOWER EASTERN SHORE | SO,WO | Medium | |
| 021302040662 | 02130204 | Dividing Creek | LOWER EASTERN SHORE | SO,WO | Medium | |
| 021302040663 | 02130204 | Dividing Creek | LOWER EASTERN SHORE | SO | Medium | |
| 021302040664 | 02130204 | Dividing Creek | LOWER EASTERN SHORE | SO,WI,WO | Medium | |
| 021302040665 | 02130204 | Dividing Creek | LOWER EASTERN SHORE | WO | Medium | |
| 021302050668 | 02130205 | Nassawango Creek | LOWER EASTERN SHORE | WI,WO | Medium | |
| 021302050669 | 02130205 | Nassawango Creek | LOWER EASTERN SHORE | WI | Medium | |
| 021302050670 | 02130205 | Nassawango Creek | LOWER EASTERN SHORE | WI | Medium | |
| 021302060616 | 02130206 | Tangier Sound | LOWER EASTERN SHORE | SO | Medium | |
| 021302060618 | 02130206 | Tangier Sound | LOWER EASTERN SHORE | DO,SO | Medium | |
| 021302070622 | 02130207 | Big Annemessex River | LOWER EASTERN SHORE | SO | Medium | |
| 021302070623 | 02130207 | Big Annemessex River | LOWER EASTERN SHORE | SO | Medium | |
| 021303010553 | 02130301 | Lower Wicomico River | LOWER EASTERN SHORE | SO,WI | Medium | |
| 021303010554 | 02130301 | Lower Wicomico River | LOWER EASTERN SHORE | DO,SO,WI | Medium | |
| 021303010555 | 02130301 | Lower Wicomico River | LOWER EASTERN SHORE | SO,WI | Medium | |
| 021303010556 | 02130301 | Lower Wicomico River | LOWER EASTERN SHORE | SO,WI | Medium | |
| 021303010557 | 02130301 | Lower Wicomico River | LOWER EASTERN SHORE | SO,WI | Medium | |
| 021303010558 | 02130301 | Lower Wicomico River | LOWER EASTERN SHORE | WI | Medium | |
| 021303010559 | 02130301 | Lower Wicomico River | LOWER EASTERN SHORE | WI | Medium | |
| 021303010560 | 02130301 | Lower Wicomico River | LOWER EASTERN SHORE | WI | Medium | |
| 021303010561 | 02130301 | Lower Wicomico River | LOWER EASTERN SHORE | WI | Medium | |
| 021303010562 | 02130301 | Lower Wicomico River | LOWER EASTERN SHORE | WI | Medium | |
| 021303020543 | 02130302 | Monie Bay | LOWER EASTERN SHORE | DO,SO,WI | Medium | |
| 021303020544 | 02130302 | Monie Bay | LOWER EASTERN SHORE | SO,WI | Medium | |
| 021303040566 | 02130304 | Wicomico River Head | LOWER EASTERN SHORE | WI | Medium | |
| 021303040567 | 02130304 | Wicomico River Head | LOWER EASTERN SHORE | WI | Medium | |
| 021303040568 | 02130304 | Wicomico River Head | LOWER EASTERN SHORE | WI | Medium | |
| 021303050571 | 02130305 | Nanticoke River | LOWER EASTERN SHORE | DO,WI | Medium | |
| 021303050572 | 02130305 | Nanticoke River | LOWER EASTERN SHORE | DO,WI | Medium | |
| 021303050573 | 02130305 | Nanticoke River | LOWER EASTERN SHORE | WI | Medium | |
| 021303050589 | 02130305 | Nanticoke River | LOWER EASTERN SHORE | CO,DO,WI | Medium | |
| 021303060601 | 02130306 | Marshyhope Creek | LOWER EASTERN SHORE | DO | Medium | |
| 021303060602 | 02130306 | Marshyhope Creek | LOWER EASTERN SHORE | DO | Medium | |
| 021303060603 | 02130306 | Marshyhope Creek | LOWER EASTERN SHORE | DO | Medium | |
| 021303060604 | 02130306 | Marshyhope Creek | LOWER EASTERN SHORE | CO,DO | Medium | |
| 021303060605 | 02130306 | Marshyhope Creek | LOWER EASTERN SHORE | DO | Medium | |
| 021303060606 | 02130306 | Marshyhope Creek | LOWER EASTERN SHORE | CO | Medium | |
| 021303060607 | 02130306 | Marshyhope Creek | LOWER EASTERN SHORE | CO,DO | Medium | |
| 021303060608 | 02130306 | Marshyhope Creek | LOWER EASTERN SHORE | CO,DO | Medium | |

PRIORITY AREAS BY 12-DIGIT WATERSHED

| | | | | | |
|--------------|----------|------------------|---------------------|----------|--------|
| 021303060609 | 02130306 | Marshyhope Creek | LOWER EASTERN SHORE | CO,DO | Medium |
| 021303060610 | 02130306 | Marshyhope Creek | LOWER EASTERN SHORE | CO,DO | Medium |
| 021303060611 | 02130306 | Marshyhope Creek | LOWER EASTERN SHORE | CO | Medium |
| 021303060612 | 02130306 | Marshyhope Creek | LOWER EASTERN SHORE | CO | Medium |
| 021303060613 | 02130306 | Marshyhope Creek | LOWER EASTERN SHORE | CO | Medium |
| 021303060614 | 02130306 | Marshyhope Creek | LOWER EASTERN SHORE | CO | Medium |
| 021303060615 | 02130306 | Marshyhope Creek | LOWER EASTERN SHORE | CO | Medium |
| 021304020451 | 02130402 | Little Choptank | CHOPTANK | DO | Medium |
| 021304020452 | 02130402 | Little Choptank | CHOPTANK | DO | Medium |
| 021304020454 | 02130402 | Little Choptank | CHOPTANK | DO | Medium |
| 021304030453 | 02130403 | Lower Choptank | CHOPTANK | DO,TA | Medium |
| 021304030455 | 02130403 | Lower Choptank | CHOPTANK | DO,TA | Medium |
| 021304030456 | 02130403 | Lower Choptank | CHOPTANK | DO,TA | Medium |
| 021304030462 | 02130403 | Lower Choptank | CHOPTANK | TA | Medium |
| 021304030464 | 02130403 | Lower Choptank | CHOPTANK | TA | Medium |
| 021304030466 | 02130403 | Lower Choptank | CHOPTANK | DO | Medium |
| 021304030467 | 02130403 | Lower Choptank | CHOPTANK | CO,DO,TA | Medium |
| 021304030468 | 02130403 | Lower Choptank | CHOPTANK | DO | Medium |
| 021304030469 | 02130403 | Lower Choptank | CHOPTANK | CO,DO | Medium |
| 021304030470 | 02130403 | Lower Choptank | CHOPTANK | CO,DO | Medium |
| 021304030471 | 02130403 | Lower Choptank | CHOPTANK | CO,DO | Medium |
| 021304040472 | 02130404 | Upper Choptank | CHOPTANK | TA | Medium |
| 021304040473 | 02130404 | Upper Choptank | CHOPTANK | CO,TA | Medium |
| 021304040474 | 02130404 | Upper Choptank | CHOPTANK | CO,TA | Medium |
| 021304040475 | 02130404 | Upper Choptank | CHOPTANK | CO,TA | Medium |
| 021304040476 | 02130404 | Upper Choptank | CHOPTANK | CO | Medium |
| 021304040477 | 02130404 | Upper Choptank | CHOPTANK | CO | Medium |
| 021304040478 | 02130404 | Upper Choptank | CHOPTANK | CO | Medium |
| 021304040479 | 02130404 | Upper Choptank | CHOPTANK | CO,TA | Medium |
| 021304040480 | 02130404 | Upper Choptank | CHOPTANK | TA | Medium |
| 021304040481 | 02130404 | Upper Choptank | CHOPTANK | TA | Medium |
| 021304040482 | 02130404 | Upper Choptank | CHOPTANK | TA | Medium |
| 021304040483 | 02130404 | Upper Choptank | CHOPTANK | TA | Medium |
| 021304040484 | 02130404 | Upper Choptank | CHOPTANK | CO | Medium |
| 021304040485 | 02130404 | Upper Choptank | CHOPTANK | CO,TA | Medium |
| 021304040486 | 02130404 | Upper Choptank | CHOPTANK | CO | Medium |
| 021304040487 | 02130404 | Upper Choptank | CHOPTANK | CO | Medium |
| 021304040488 | 02130404 | Upper Choptank | CHOPTANK | CO | Medium |
| 021304040489 | 02130404 | Upper Choptank | CHOPTANK | CO | Medium |
| 021304040490 | 02130404 | Upper Choptank | CHOPTANK | CO | Medium |
| 021304040491 | 02130404 | Upper Choptank | CHOPTANK | CO | Medium |
| 021304040492 | 02130404 | Upper Choptank | CHOPTANK | CO | Medium |
| 021304040493 | 02130404 | Upper Choptank | CHOPTANK | CO | Medium |
| 021304040494 | 02130404 | Upper Choptank | CHOPTANK | CO | Medium |
| 021304040495 | 02130404 | Upper Choptank | CHOPTANK | CO | Medium |
| 021304040496 | 02130404 | Upper Choptank | CHOPTANK | CO | Medium |
| 021304040497 | 02130404 | Upper Choptank | CHOPTANK | CO | Medium |
| 021304040498 | 02130404 | Upper Choptank | CHOPTANK | CO | Medium |
| 021304040499 | 02130404 | Upper Choptank | CHOPTANK | CO | Medium |
| 021304040500 | 02130404 | Upper Choptank | CHOPTANK | CO | Medium |
| 021304040501 | 02130404 | Upper Choptank | CHOPTANK | CO | Medium |
| 021304040502 | 02130404 | Upper Choptank | CHOPTANK | CO | Medium |
| 021304040503 | 02130404 | Upper Choptank | CHOPTANK | CO | Medium |
| 021304040504 | 02130404 | Upper Choptank | CHOPTANK | CO | Medium |
| 021304040505 | 02130404 | Upper Choptank | CHOPTANK | CO | Medium |
| 021304040506 | 02130404 | Upper Choptank | CHOPTANK | CO | Medium |
| 021304040507 | 02130404 | Upper Choptank | CHOPTANK | CO | Medium |
| 021304040508 | 02130404 | Upper Choptank | CHOPTANK | CO | Medium |
| 021304040509 | 02130404 | Upper Choptank | CHOPTANK | CO | Medium |

PRIORITY AREAS BY 12-DIGIT WATERSHED

| | | | | | |
|--------------|----------|----------------------|---------------------|----------|--------|
| 021304040510 | 02130404 | Upper Choptank | CHOPTANK | CO | Medium |
| 021304050516 | 02130405 | Tuckahoe Creek | CHOPTANK | CO,TA | Medium |
| 021304050517 | 02130405 | Tuckahoe Creek | CHOPTANK | TA | Medium |
| 021304050518 | 02130405 | Tuckahoe Creek | CHOPTANK | CO,TA | Medium |
| 021304050519 | 02130405 | Tuckahoe Creek | CHOPTANK | CO | Medium |
| 021304050520 | 02130405 | Tuckahoe Creek | CHOPTANK | CO | Medium |
| 021304050521 | 02130405 | Tuckahoe Creek | CHOPTANK | CO | Medium |
| 021304050522 | 02130405 | Tuckahoe Creek | CHOPTANK | CO,QA,TA | Medium |
| 021304050523 | 02130405 | Tuckahoe Creek | CHOPTANK | CO | Medium |
| 021304050524 | 02130405 | Tuckahoe Creek | CHOPTANK | CO,QA,TA | Medium |
| 021304050525 | 02130405 | Tuckahoe Creek | CHOPTANK | CO,QA,TA | Medium |
| 021304050526 | 02130405 | Tuckahoe Creek | CHOPTANK | CO | Medium |
| 021304050527 | 02130405 | Tuckahoe Creek | CHOPTANK | CO,QA | Medium |
| 021304050528 | 02130405 | Tuckahoe Creek | CHOPTANK | CO | Medium |
| 021304050529 | 02130405 | Tuckahoe Creek | CHOPTANK | CO,QA | Medium |
| 021304050530 | 02130405 | Tuckahoe Creek | CHOPTANK | CO,QA | Medium |
| 021304050531 | 02130405 | Tuckahoe Creek | CHOPTANK | CO,QA | Medium |
| 021304050532 | 02130405 | Tuckahoe Creek | CHOPTANK | CO | Medium |
| 021304050533 | 02130405 | Tuckahoe Creek | CHOPTANK | CO,QA | Medium |
| 021304050534 | 02130405 | Tuckahoe Creek | CHOPTANK | CO,QA | Medium |
| 021304050535 | 02130405 | Tuckahoe Creek | CHOPTANK | CO,QA | Medium |
| 021304050536 | 02130405 | Tuckahoe Creek | CHOPTANK | CO,QA | Medium |
| 021304050537 | 02130405 | Tuckahoe Creek | CHOPTANK | CO,QA | Medium |
| 021304050538 | 02130405 | Tuckahoe Creek | CHOPTANK | QA | Medium |
| 021304050539 | 02130405 | Tuckahoe Creek | CHOPTANK | QA | Medium |
| 021304050540 | 02130405 | Tuckahoe Creek | CHOPTANK | QA | Medium |
| 021304050541 | 02130405 | Tuckahoe Creek | CHOPTANK | CO | Medium |
| 021304050542 | 02130405 | Tuckahoe Creek | CHOPTANK | CO,QA | Medium |
| 021305010429 | 02130501 | Eastern Bay | UPPER EASTERN SHORE | QA,TA | Medium |
| 021305020442 | 02130502 | Miles River | UPPER EASTERN SHORE | TA | Medium |
| 021305020443 | 02130502 | Miles River | UPPER EASTERN SHORE | TA | Medium |
| 021305020444 | 02130502 | Miles River | UPPER EASTERN SHORE | TA | Medium |
| 021305040431 | 02130504 | Kent Narrows | UPPER EASTERN SHORE | QA | Medium |
| 021305050388 | 02130505 | Lower Chester River | UPPER EASTERN SHORE | KE | Medium |
| 021305050390 | 02130505 | Lower Chester River | UPPER EASTERN SHORE | KE,QA | Medium |
| 021305050392 | 02130505 | Lower Chester River | UPPER EASTERN SHORE | KE,QA | Medium |
| 021305050393 | 02130505 | Lower Chester River | UPPER EASTERN SHORE | KE,QA | Medium |
| 021305050394 | 02130505 | Lower Chester River | UPPER EASTERN SHORE | KE | Medium |
| 021305060405 | 02130506 | Langford Creek | UPPER EASTERN SHORE | KE | Medium |
| 021305060406 | 02130506 | Langford Creek | UPPER EASTERN SHORE | KE | Medium |
| 021305070395 | 02130507 | Corsica River | UPPER EASTERN SHORE | QA | Medium |
| 021305090410 | 02130509 | Middle Chester River | UPPER EASTERN SHORE | KE,QA | Medium |
| 021305090413 | 02130509 | Middle Chester River | UPPER EASTERN SHORE | KE,QA | Medium |
| 021305090414 | 02130509 | Middle Chester River | UPPER EASTERN SHORE | KE | Medium |
| 021305090415 | 02130509 | Middle Chester River | UPPER EASTERN SHORE | KE | Medium |
| 021305100416 | 02130510 | Upper Chester River | UPPER EASTERN SHORE | QA | Medium |
| 021305100417 | 02130510 | Upper Chester River | UPPER EASTERN SHORE | KE,QA | Medium |
| 021305100418 | 02130510 | Upper Chester River | UPPER EASTERN SHORE | KE,QA | Medium |
| 021305100419 | 02130510 | Upper Chester River | UPPER EASTERN SHORE | QA | Medium |
| 021305100420 | 02130510 | Upper Chester River | UPPER EASTERN SHORE | QA | Medium |
| 021305100423 | 02130510 | Upper Chester River | UPPER EASTERN SHORE | KE | Medium |
| 021305110428 | 02130511 | Kent Island Bay | UPPER EASTERN SHORE | QA | Medium |
| 021306020365 | 02130602 | Bohemia River | UPPER EASTERN SHORE | CE | Medium |
| 021306030371 | 02130603 | Upper Elk River | UPPER EASTERN SHORE | CE | Medium |
| 021306050382 | 02130605 | Little Elk Creek | UPPER EASTERN SHORE | CE | Medium |
| 021306050383 | 02130605 | Little Elk Creek | UPPER EASTERN SHORE | CE | Medium |
| 021306050384 | 02130605 | Little Elk Creek | UPPER EASTERN SHORE | CE | Medium |
| 021306100357 | 02130610 | Sassafras River | UPPER EASTERN SHORE | CE,KE | Medium |
| 021306100358 | 02130610 | Sassafras River | UPPER EASTERN SHORE | CE,KE | Medium |

PRIORITY AREAS BY 12-DIGIT WATERSHED

| | | | | | | |
|--------------|----------|-------------------------|---------------------|----------|--------|---|
| 021306110348 | 02130611 | Stillpond-Fairlee | UPPER EASTERN SHORE | KE | Medium | |
| 021307011127 | 02130701 | Bush River | UPPER WESTERN SHORE | HA | Medium | |
| 021307011129 | 02130701 | Bush River | UPPER WESTERN SHORE | HA | Medium | |
| 021307021130 | 02130702 | Lower Winters Run | UPPER WESTERN SHORE | HA | Medium | |
| 021307031132 | 02130703 | Atkisson Reservoir | UPPER WESTERN SHORE | HA | Medium | |
| 021307031133 | 02130703 | Atkisson Reservoir | UPPER WESTERN SHORE | HA | Medium | |
| 021307031134 | 02130703 | Atkisson Reservoir | UPPER WESTERN SHORE | HA | Medium | |
| 021307041131 | 02130704 | Bynum Run | UPPER WESTERN SHORE | HA | Medium | |
| 021307051125 | 02130705 | Aberdeen Proving Ground | UPPER WESTERN SHORE | HA | Medium | |
| 021307051126 | 02130705 | Aberdeen Proving Ground | UPPER WESTERN SHORE | HA | Medium | |
| 021307061135 | 02130706 | Swan Creek | UPPER WESTERN SHORE | HA | Medium | Y |
| 021307061136 | 02130706 | Swan Creek | UPPER WESTERN SHORE | HA | Medium | Y |
| 021308010292 | 02130801 | Gunpowder River | UPPER WESTERN SHORE | BA,HA | Medium | |
| 021308020296 | 02130802 | Lower Gunpowder Falls | UPPER WESTERN SHORE | BA | Medium | |
| 021308020297 | 02130802 | Lower Gunpowder Falls | UPPER WESTERN SHORE | BA | Medium | |
| 021308030294 | 02130803 | Bird River | UPPER WESTERN SHORE | BA | Medium | |
| 021308050300 | 02130805 | Loch Raven Reservoir | UPPER WESTERN SHORE | BA | Medium | |
| 021308050301 | 02130805 | Loch Raven Reservoir | UPPER WESTERN SHORE | BA | Medium | |
| 021309021000 | 02130902 | Bodkin Creek | PATAPSCO/BACK | AA | Medium | |
| 021309061018 | 02130906 | Patapsco River L N Br | PATAPSCO/BACK | BA | Medium | |
| 021309061019 | 02130906 | Patapsco River L N Br | PATAPSCO/BACK | BA,CL,HO | Medium | |
| 021310011004 | 02131001 | Magothy River | LOWER WESTERN SHORE | AA | Medium | |
| 021310020999 | 02131002 | Severn River | LOWER WESTERN SHORE | AA | Medium | |
| 021310021001 | 02131002 | Severn River | LOWER WESTERN SHORE | AA | Medium | |
| 021310021002 | 02131002 | Severn River | LOWER WESTERN SHORE | AA | Medium | |
| 021310030988 | 02131003 | South River | LOWER WESTERN SHORE | AA | Medium | |
| 021310030993 | 02131003 | South River | LOWER WESTERN SHORE | AA | Medium | |
| 021310050975 | 02131005 | West Chesapeake Bay | LOWER WESTERN SHORE | CA | Medium | |
| 021310050980 | 02131005 | West Chesapeake Bay | LOWER WESTERN SHORE | AA | Medium | |
| 021310050981 | 02131005 | West Chesapeake Bay | LOWER WESTERN SHORE | AA | Medium | |
| 021310050982 | 02131005 | West Chesapeake Bay | LOWER WESTERN SHORE | AA | Medium | |
| 021311010869 | 02131101 | Patuxent River lower | PATUXENT | SM | Medium | |
| 021311010870 | 02131101 | Patuxent River lower | PATUXENT | SM | Medium | |
| 021311010873 | 02131101 | Patuxent River lower | PATUXENT | CA,SM | Medium | |
| 021311010874 | 02131101 | Patuxent River lower | PATUXENT | CA,SM | Medium | |
| 021311030911 | 02131103 | Western Branch | PATUXENT | PG | Medium | |
| 021311030912 | 02131103 | Western Branch | PATUXENT | PG | Medium | |
| 021311030913 | 02131103 | Patuxent River middle | PATUXENT | PG | Medium | |
| 021311030918 | 02131103 | Western Branch | PATUXENT | PG | Medium | |
| 021311030919 | 02131103 | Western Branch | PATUXENT | PG | Medium | |
| 021311030920 | 02131103 | Western Branch | PATUXENT | PG | Medium | |
| 021311030921 | 02131103 | Western Branch | PATUXENT | PG | Medium | |
| 021311030922 | 02131103 | Western Branch | PATUXENT | PG | Medium | |
| 021311030923 | 02131103 | Western Branch | PATUXENT | PG | Medium | |
| 021311030924 | 02131103 | Western Branch | PATUXENT | PG | Medium | |
| 021311030925 | 02131103 | Western Branch | PATUXENT | PG | Medium | |
| 021311030926 | 02131103 | Western Branch | PATUXENT | PG | Medium | |
| 021311030927 | 02131103 | Western Branch | PATUXENT | PG | Medium | |
| 021311030928 | 02131103 | Western Branch | PATUXENT | PG | Medium | |
| 021311030929 | 02131103 | Western Branch | PATUXENT | PG | Medium | |
| 021311040935 | 02131104 | Patuxent River upper | PATUXENT | AA,PG | Medium | |
| 021311040936 | 02131104 | Patuxent River upper | PATUXENT | AA,PG | Medium | |
| 021311040937 | 02131104 | Patuxent River upper | PATUXENT | AA,PG | Medium | |
| 021311040938 | 02131104 | Patuxent River upper | PATUXENT | AA,PG | Medium | |
| 021311040939 | 02131104 | Patuxent River upper | PATUXENT | AA,PG | Medium | |
| 021311040940 | 02131104 | Patuxent River upper | PATUXENT | AA,HO,MO | Medium | |
| 021311050947 | 02131105 | Little Patuxent River | PATUXENT | AA | Medium | |
| 021311060958 | 02131106 | Middle Patuxent River | PATUXENT | HO | Medium | |
| 021401020791 | 02140102 | Potomac River M tidal | LOWER POTOMAC | CH,PG | Medium | |

PRIORITY AREAS BY 12-DIGIT WATERSHED

| | | | | | | |
|--------------|----------|-----------------------|----------------|----------|--------|---|
| 021401030719 | 02140103 | St. Mary's River | LOWER POTOMAC | SM | Medium | Y |
| 021401060735 | 02140106 | Wicomico River | LOWER POTOMAC | CH | Medium | |
| 021401090773 | 02140109 | Port Tobacco River | LOWER POTOMAC | CH | Medium | |
| 021401090774 | 02140109 | Port Tobacco River | LOWER POTOMAC | CH | Medium | |
| 021401110780 | 02140111 | Mattawoman Creek | LOWER POTOMAC | CH | Medium | Y |
| 021401110781 | 02140111 | Mattawoman Creek | LOWER POTOMAC | CH | Medium | |
| 021401110782 | 02140111 | Mattawoman Creek | LOWER POTOMAC | CH | Medium | Y |
| 021401110783 | 02140111 | Mattawoman Creek | LOWER POTOMAC | CH | Medium | |
| 021401110784 | 02140111 | Mattawoman Creek | LOWER POTOMAC | CH,PG | Medium | |
| 021401110785 | 02140111 | Mattawoman Creek | LOWER POTOMAC | CH | Medium | |
| 021401110786 | 02140111 | Mattawoman Creek | LOWER POTOMAC | CH,PG | Medium | Y |
| 021401110787 | 02140111 | Mattawoman Creek | LOWER POTOMAC | CH,PG | Medium | Y |
| 021401110788 | 02140111 | Mattawoman Creek | LOWER POTOMAC | CH,PG | Medium | Y |
| 021402010792 | 02140201 | Potomac River U tidal | MIDDLE POTOMAC | CH,PG | Medium | |
| 021402010793 | 02140201 | Potomac River U tidal | MIDDLE POTOMAC | PG | Medium | |
| 021402020846 | 02140202 | Potomac River MO Cnty | MIDDLE POTOMAC | MO | Medium | |
| 021402020850 | 02140202 | Potomac River MO Cnty | MIDDLE POTOMAC | MO | Medium | |
| 021402030798 | 02140203 | Piscataway Creek | MIDDLE POTOMAC | PG | Medium | |
| 021402030799 | 02140203 | Piscataway Creek | MIDDLE POTOMAC | PG | Medium | |
| 021402030801 | 02140203 | Piscataway Creek | MIDDLE POTOMAC | PG | Medium | Y |
| 021402030803 | 02140203 | Piscataway Creek | MIDDLE POTOMAC | PG | Medium | |
| 021402030804 | 02140203 | Piscataway Creek | MIDDLE POTOMAC | PG | Medium | Y |
| 021402080857 | 02140208 | Seneca Creek | MIDDLE POTOMAC | MO | Medium | |
| 021402080860 | 02140208 | Seneca Creek | MIDDLE POTOMAC | MO | Medium | |
| 021402080862 | 02140208 | Seneca Creek | MIDDLE POTOMAC | MO | Medium | |
| 021402080863 | 02140208 | Seneca Creek | MIDDLE POTOMAC | MO | Medium | |
| 021402080864 | 02140208 | Seneca Creek | MIDDLE POTOMAC | MO | Medium | |
| 021402080865 | 02140208 | Seneca Creek | MIDDLE POTOMAC | MO | Medium | |
| 021402080866 | 02140208 | Seneca Creek | MIDDLE POTOMAC | MO | Medium | |
| 021403020227 | 02140302 | Lower Monocacy River | UPPER POTOMAC | FR | Medium | |
| 021403020228 | 02140302 | Lower Monocacy River | UPPER POTOMAC | CL,FR,MO | Medium | |
| 021403020229 | 02140302 | Lower Monocacy River | UPPER POTOMAC | FR | Medium | |
| 021403020230 | 02140302 | Lower Monocacy River | UPPER POTOMAC | FR | Medium | |
| 021403020231 | 02140302 | Lower Monocacy River | UPPER POTOMAC | FR | Medium | |
| 021403020232 | 02140302 | Lower Monocacy River | UPPER POTOMAC | FR | Medium | |
| 021403020233 | 02140302 | Lower Monocacy River | UPPER POTOMAC | FR | Medium | |
| 021403020234 | 02140302 | Lower Monocacy River | UPPER POTOMAC | FR | Medium | |
| 021403020236 | 02140302 | Lower Monocacy River | UPPER POTOMAC | FR | Medium | |
| 021403020237 | 02140302 | Lower Monocacy River | UPPER POTOMAC | FR | Medium | |
| 021403020239 | 02140302 | Lower Monocacy River | UPPER POTOMAC | FR | Medium | |
| 021403030240 | 02140303 | Upper Monocacy River | UPPER POTOMAC | FR | Medium | |
| 021403030241 | 02140303 | Upper Monocacy River | UPPER POTOMAC | FR | Medium | |
| 021403030242 | 02140303 | Upper Monocacy River | UPPER POTOMAC | FR | Medium | |
| 021403030243 | 02140303 | Upper Monocacy River | UPPER POTOMAC | FR | Medium | |
| 021403030244 | 02140303 | Upper Monocacy River | UPPER POTOMAC | FR | Medium | |
| 021403030245 | 02140303 | Upper Monocacy River | UPPER POTOMAC | FR | Medium | |
| 021403030246 | 02140303 | Upper Monocacy River | UPPER POTOMAC | FR | Medium | |
| 021403030247 | 02140303 | Upper Monocacy River | UPPER POTOMAC | CL,FR | Medium | |
| 021403030249 | 02140303 | Upper Monocacy River | UPPER POTOMAC | FR | Medium | |
| 021403030251 | 02140303 | Upper Monocacy River | UPPER POTOMAC | FR | Medium | |
| 021403030252 | 02140303 | Upper Monocacy River | UPPER POTOMAC | FR | Medium | |
| 021403030254 | 02140303 | Upper Monocacy River | UPPER POTOMAC | CL | Medium | |
| 021403030255 | 02140303 | Upper Monocacy River | UPPER POTOMAC | CL | Medium | |
| 021403030256 | 02140303 | Upper Monocacy River | UPPER POTOMAC | CL,FR | Medium | |
| 021403030257 | 02140303 | Upper Monocacy River | UPPER POTOMAC | CL | Medium | |
| 021403030259 | 02140303 | Upper Monocacy River | UPPER POTOMAC | FR | Medium | |
| 021403030261 | 02140303 | Upper Monocacy River | UPPER POTOMAC | FR | Medium | |
| 021403030264 | 02140303 | Upper Monocacy River | UPPER POTOMAC | CL | Medium | |
| 021403030265 | 02140303 | Upper Monocacy River | UPPER POTOMAC | CL | Medium | |

PRIORITY AREAS BY 12-DIGIT WATERSHED

| | | | | | |
|--------------|----------|--------------------------|---------------------|-------|----------|
| 021403030266 | 02140303 | Upper Monocacy River | UPPER POTOMAC | CL | Medium |
| 021403030267 | 02140303 | Upper Monocacy River | UPPER POTOMAC | CL | Medium |
| 021403040248 | 02140304 | Double Pipe Creek | UPPER POTOMAC | CL,FR | Medium |
| 021403040270 | 02140304 | Double Pipe Creek | UPPER POTOMAC | CL,FR | Medium |
| 021403040274 | 02140304 | Double Pipe Creek | UPPER POTOMAC | CL,FR | Medium |
| 021403040278 | 02140304 | Double Pipe Creek | UPPER POTOMAC | CL | Medium |
| 021403040279 | 02140304 | Double Pipe Creek | UPPER POTOMAC | CL | Medium |
| 021403040280 | 02140304 | Double Pipe Creek | UPPER POTOMAC | CL,FR | Medium |
| 021403050212 | 02140305 | Catoctin Creek | UPPER POTOMAC | FR | Medium |
| 021403050213 | 02140305 | Catoctin Creek | UPPER POTOMAC | FR | Medium |
| 021403050214 | 02140305 | Catoctin Creek | UPPER POTOMAC | FR,WA | Medium |
| 021403050215 | 02140305 | Catoctin Creek | UPPER POTOMAC | FR | Medium |
| 021403050216 | 02140305 | Catoctin Creek | UPPER POTOMAC | FR | Medium |
| 021405020188 | 02140502 | Antietam Creek | UPPER POTOMAC | WA | Medium |
| 021405020189 | 02140502 | Antietam Creek | UPPER POTOMAC | FR,WA | Medium |
| 021405020190 | 02140502 | Antietam Creek | UPPER POTOMAC | FR,WA | Medium |
| 021405020191 | 02140502 | Antietam Creek | UPPER POTOMAC | FR,WA | Medium |
| 021405020196 | 02140502 | Antietam Creek | UPPER POTOMAC | WA | Medium |
| 021405020197 | 02140502 | Antietam Creek | UPPER POTOMAC | WA | Medium |
| 021405020199 | 02140502 | Antietam Creek | UPPER POTOMAC | WA | Medium |
| 021405020202 | 02140502 | Antietam Creek | UPPER POTOMAC | WA | Medium |
| 021405040177 | 02140504 | Conococheague Creek | UPPER POTOMAC | WA | Medium |
| 021405040178 | 02140504 | Conococheague Creek | UPPER POTOMAC | WA | Medium |
| 021405040179 | 02140504 | Conococheague Creek | UPPER POTOMAC | WA | Medium |
| 021405040180 | 02140504 | Conococheague Creek | UPPER POTOMAC | WA | Medium |
| 021405040181 | 02140504 | Conococheague Creek | UPPER POTOMAC | WA | Medium |
| 021405040182 | 02140504 | Conococheague Creek | UPPER POTOMAC | WA | Medium |
| 021405040183 | 02140504 | Conococheague Creek | UPPER POTOMAC | WA | Medium |
| 021405040184 | 02140504 | Conococheague Creek | UPPER POTOMAC | WA | Medium |
| 021410010061 | 02141001 | Potomac River L N Branch | UPPER POTOMAC | AL | Medium |
| 021410030101 | 02141003 | Wills Creek | UPPER POTOMAC | AL | Medium Y |
| 020503010289 | 02050301 | Conewago Creek | UPPER POTOMAC | CL | Low |
| 020503010290 | 02050301 | Conewago Creek | UPPER POTOMAC | CL | Low |
| 021202010320 | 02120201 | L Susquehanna River | UPPER WESTERN SHORE | CE,HA | Low |
| 021202020321 | 02120202 | Deer Creek | UPPER WESTERN SHORE | HA | Low |
| 021202020322 | 02120202 | Deer Creek | UPPER WESTERN SHORE | HA | Low |
| 021202020323 | 02120202 | Deer Creek | UPPER WESTERN SHORE | HA | Low |
| 021202020324 | 02120202 | Deer Creek | UPPER WESTERN SHORE | HA | Low |
| 021202020325 | 02120202 | Deer Creek | UPPER WESTERN SHORE | HA | Low |
| 021202020326 | 02120202 | Deer Creek | UPPER WESTERN SHORE | HA | Low |
| 021202020327 | 02120202 | Deer Creek | UPPER WESTERN SHORE | HA | Low |
| 021202020328 | 02120202 | Deer Creek | UPPER WESTERN SHORE | HA | Low |
| 021202020329 | 02120202 | Deer Creek | UPPER WESTERN SHORE | HA | Low |
| 021202020330 | 02120202 | Deer Creek | UPPER WESTERN SHORE | BA,HA | Low |
| 021202020331 | 02120202 | Deer Creek | UPPER WESTERN SHORE | HA | Low |
| 021202020332 | 02120202 | Deer Creek | UPPER WESTERN SHORE | BA,HA | Low |
| 021202040333 | 02120204 | Conowingo Dam Susq R | UPPER WESTERN SHORE | CE,HA | Low |
| 021202040334 | 02120204 | Conowingo Dam Susq R | UPPER WESTERN SHORE | CE,HA | Low |
| 021202050339 | 02120205 | Broad Creek | UPPER WESTERN SHORE | HA | Low |
| 021202050340 | 02120205 | Broad Creek | UPPER WESTERN SHORE | HA | Low |
| 021202050341 | 02120205 | Broad Creek | UPPER WESTERN SHORE | HA | Low |
| 021202050343 | 02120205 | Broad Creek | UPPER WESTERN SHORE | HA | Low |
| 021301020688 | 02130102 | Assawoman Bay | Coastal Bays | WO | Low |
| 021301020689 | 02130102 | Assawoman Bay | Coastal Bays | WO | Low |
| 021301030686 | 02130103 | Isle of Wight Bay | Coastal Bays | WO | Low |
| 021301030687 | 02130103 | Isle of Wight Bay | Coastal Bays | WO | Low |
| 021301030690 | 02130103 | Isle of Wight Bay | Coastal Bays | WO | Low |
| 021301030691 | 02130103 | Isle of Wight Bay | Coastal Bays | WO | Low |
| 021301030692 | 02130103 | Isle of Wight Bay | Coastal Bays | WO | Low |

PRIORITY AREAS BY 12-DIGIT WATERSHED

| | | | | | |
|--------------|----------|----------------------|---------------------|-------|-----|
| 021301040681 | 02130104 | Sinepuxent Bay | Coastal Bays | WO | Low |
| 021301050682 | 02130105 | Newport Bay | Coastal Bays | WO | Low |
| 021301050683 | 02130105 | Newport Bay | Coastal Bays | WO | Low |
| 021301050684 | 02130105 | Newport Bay | Coastal Bays | WO | Low |
| 021301050685 | 02130105 | Newport Bay | Coastal Bays | WO | Low |
| 021302010620 | 02130201 | Pocomoke Sound | LOWER EASTERN SHORE | SO | Low |
| 021302020629 | 02130202 | Lower Pocomoke River | LOWER EASTERN SHORE | SO,WO | Low |
| 021302020630 | 02130202 | Lower Pocomoke River | LOWER EASTERN SHORE | SO,WO | Low |
| 021302060617 | 02130206 | Tangier Sound | LOWER EASTERN SHORE | DO,SO | Low |
| 021302080656 | 02130208 | Manokin River | LOWER EASTERN SHORE | SO | Low |
| 021302080657 | 02130208 | Manokin River | LOWER EASTERN SHORE | SO | Low |
| 021303040569 | 02130304 | Wicomico River Head | LOWER EASTERN SHORE | WI | Low |
| 021303040570 | 02130304 | Wicomico River Head | LOWER EASTERN SHORE | WI | Low |
| 021303050585 | 02130305 | Nanticoke River | LOWER EASTERN SHORE | DO,WI | Low |
| 021303050586 | 02130305 | Nanticoke River | LOWER EASTERN SHORE | DO | Low |
| 021303070545 | 02130307 | Fishing Bay | LOWER EASTERN SHORE | DO,WI | Low |
| 021303070546 | 02130307 | Fishing Bay | LOWER EASTERN SHORE | DO | Low |
| 021303070547 | 02130307 | Fishing Bay | LOWER EASTERN SHORE | DO | Low |
| 021303070548 | 02130307 | Fishing Bay | LOWER EASTERN SHORE | DO | Low |
| 021303070549 | 02130307 | Fishing Bay | LOWER EASTERN SHORE | DO | Low |
| 021303070550 | 02130307 | Fishing Bay | LOWER EASTERN SHORE | DO | Low |
| 021303070551 | 02130307 | Fishing Bay | LOWER EASTERN SHORE | DO | Low |
| 021303070552 | 02130307 | Fishing Bay | LOWER EASTERN SHORE | DO | Low |
| 021303080590 | 02130308 | Transquaking River | LOWER EASTERN SHORE | DO | Low |
| 021303080591 | 02130308 | Transquaking River | LOWER EASTERN SHORE | DO | Low |
| 021303080592 | 02130308 | Transquaking River | LOWER EASTERN SHORE | DO | Low |
| 021303080593 | 02130308 | Transquaking River | LOWER EASTERN SHORE | DO | Low |
| 021303080594 | 02130308 | Transquaking River | LOWER EASTERN SHORE | DO | Low |
| 021303080595 | 02130308 | Transquaking River | LOWER EASTERN SHORE | DO | Low |
| 021303080596 | 02130308 | Transquaking River | LOWER EASTERN SHORE | DO | Low |
| 021303080597 | 02130308 | Transquaking River | LOWER EASTERN SHORE | DO | Low |
| 021303080598 | 02130308 | Transquaking River | LOWER EASTERN SHORE | DO | Low |
| 021303080599 | 02130308 | Transquaking River | LOWER EASTERN SHORE | DO | Low |
| 021303080600 | 02130308 | Transquaking River | LOWER EASTERN SHORE | DO | Low |
| 021304010445 | 02130401 | Honga River | LOWER EASTERN SHORE | DO | Low |
| 021304010446 | 02130401 | Honga River | LOWER EASTERN SHORE | DO | Low |
| 021304020447 | 02130402 | Little Choptank | CHOPTANK | DO | Low |
| 021304020448 | 02130402 | Little Choptank | CHOPTANK | DO | Low |
| 021304020449 | 02130402 | Little Choptank | CHOPTANK | DO | Low |
| 021304020450 | 02130402 | Little Choptank | CHOPTANK | DO | Low |
| 021304030457 | 02130403 | Lower Choptank | CHOPTANK | DO,TA | Low |
| 021304040511 | 02130404 | Upper Choptank | CHOPTANK | CO | Low |
| 021304040512 | 02130404 | Upper Choptank | CHOPTANK | CO | Low |
| 021304040513 | 02130404 | Upper Choptank | CHOPTANK | CO | Low |
| 021304040514 | 02130404 | Upper Choptank | CHOPTANK | CO | Low |
| 021304040515 | 02130404 | Upper Choptank | CHOPTANK | CO,QA | Low |
| 021305010430 | 02130501 | Eastern Bay | UPPER EASTERN SHORE | QA,TA | Low |
| 021305050389 | 02130505 | Lower Chester River | UPPER EASTERN SHORE | KE,QA | Low |
| 021305100421 | 02130510 | Upper Chester River | UPPER EASTERN SHORE | CO,QA | Low |
| 021305100422 | 02130510 | Upper Chester River | UPPER EASTERN SHORE | KE,QA | Low |
| 021305100424 | 02130510 | Upper Chester River | UPPER EASTERN SHORE | KE,QA | Low |
| 021305100425 | 02130510 | Upper Chester River | UPPER EASTERN SHORE | KE,QA | Low |
| 021305100426 | 02130510 | Upper Chester River | UPPER EASTERN SHORE | KE,QA | Low |
| 021305100427 | 02130510 | Upper Chester River | UPPER EASTERN SHORE | KE | Low |
| 021306010359 | 02130601 | Lower Elk River | UPPER EASTERN SHORE | CE | Low |
| 021306010360 | 02130601 | Lower Elk River | UPPER EASTERN SHORE | CE | Low |
| 021306010361 | 02130601 | Lower Elk River | UPPER EASTERN SHORE | CE | Low |
| 021306010362 | 02130601 | Lower Elk River | UPPER EASTERN SHORE | CE | Low |
| 021306020363 | 02130602 | Bohemia River | UPPER EASTERN SHORE | CE | Low |

PRIORITY AREAS BY 12-DIGIT WATERSHED

| | | | | | |
|--------------|----------|-------------------------|---------------------|----------|-----|
| 021306020364 | 02130602 | Bohemia River | UPPER EASTERN SHORE | CE | Low |
| 021306020366 | 02130602 | Bohemia River | UPPER EASTERN SHORE | CE | Low |
| 021306030368 | 02130603 | Upper Elk River | UPPER EASTERN SHORE | CE | Low |
| 021306030369 | 02130603 | Upper Elk River | UPPER EASTERN SHORE | CE | Low |
| 021306030370 | 02130603 | Upper Elk River | UPPER EASTERN SHORE | CE | Low |
| 021306030372 | 02130603 | Upper Elk River | UPPER EASTERN SHORE | CE | Low |
| 021306030373 | 02130603 | Upper Elk River | UPPER EASTERN SHORE | CE | Low |
| 021306040367 | 02130604 | Back Creek | UPPER EASTERN SHORE | CE | Low |
| 021306060385 | 02130606 | Big Elk Creek | UPPER EASTERN SHORE | CE | Low |
| 021306060386 | 02130606 | Big Elk Creek | UPPER EASTERN SHORE | CE | Low |
| 021306060387 | 02130606 | Big Elk Creek | UPPER EASTERN SHORE | CE | Low |
| 021306080374 | 02130608 | Northeast River | UPPER EASTERN SHORE | CE | Low |
| 021306080375 | 02130608 | Northeast River | UPPER EASTERN SHORE | CE | Low |
| 021306080376 | 02130608 | Northeast River | UPPER EASTERN SHORE | CE | Low |
| 021306080377 | 02130608 | Northeast River | UPPER EASTERN SHORE | CE | Low |
| 021306080378 | 02130608 | Northeast River | UPPER EASTERN SHORE | CE | Low |
| 021306080379 | 02130608 | Northeast River | UPPER EASTERN SHORE | CE | Low |
| 021306090380 | 02130609 | Furnace Bay | UPPER EASTERN SHORE | CE | Low |
| 021306100354 | 02130610 | Sassafras River | UPPER EASTERN SHORE | CE,KE | Low |
| 021306100356 | 02130610 | Sassafras River | UPPER EASTERN SHORE | CE,KE | Low |
| 021307011128 | 02130701 | Bush River | UPPER WESTERN SHORE | HA | Low |
| 021307051124 | 02130705 | Aberdeen Proving Ground | UPPER WESTERN SHORE | HA | Low |
| 021308040298 | 02130804 | Little Gunpowder Falls | UPPER WESTERN SHORE | BA,HA | Low |
| 021308040299 | 02130804 | Little Gunpowder Falls | UPPER WESTERN SHORE | BA,HA | Low |
| 021308050302 | 02130805 | Loch Raven Reservoir | UPPER WESTERN SHORE | BA | Low |
| 021308050303 | 02130805 | Loch Raven Reservoir | UPPER WESTERN SHORE | BA | Low |
| 021308050304 | 02130805 | Loch Raven Reservoir | UPPER WESTERN SHORE | BA | Low |
| 021308050305 | 02130805 | Loch Raven Reservoir | UPPER WESTERN SHORE | BA | Low |
| 021308050306 | 02130805 | Loch Raven Reservoir | UPPER WESTERN SHORE | BA | Low |
| 021308050307 | 02130805 | Loch Raven Reservoir | UPPER WESTERN SHORE | BA | Low |
| 021308050308 | 02130805 | Loch Raven Reservoir | UPPER WESTERN SHORE | BA,CL | Low |
| 021308050309 | 02130805 | Loch Raven Reservoir | UPPER WESTERN SHORE | BA,HA | Low |
| 021308050310 | 02130805 | Loch Raven Reservoir | UPPER WESTERN SHORE | BA | Low |
| 021308050311 | 02130805 | Loch Raven Reservoir | UPPER WESTERN SHORE | BA | Low |
| 021308050312 | 02130805 | Loch Raven Reservoir | UPPER WESTERN SHORE | BA | Low |
| 021308060313 | 02130806 | Prettyboy Reservoir | UPPER WESTERN SHORE | BA,CL | Low |
| 021308060314 | 02130806 | Prettyboy Reservoir | UPPER WESTERN SHORE | BA,CL | Low |
| 021308060315 | 02130806 | Prettyboy Reservoir | UPPER WESTERN SHORE | BA,CL | Low |
| 021308060316 | 02130806 | Prettyboy Reservoir | UPPER WESTERN SHORE | BA,CL | Low |
| 021308060317 | 02130806 | Prettyboy Reservoir | UPPER WESTERN SHORE | CL | Low |
| 021309071046 | 02130907 | Liberty Reservoir | PATAPSCO/BACK | BA,CL | Low |
| 021309071047 | 02130907 | Liberty Reservoir | PATAPSCO/BACK | CL | Low |
| 021309071048 | 02130907 | Liberty Reservoir | PATAPSCO/BACK | BA,CL | Low |
| 021309071049 | 02130907 | Liberty Reservoir | PATAPSCO/BACK | CL | Low |
| 021309071050 | 02130907 | Liberty Reservoir | PATAPSCO/BACK | CL | Low |
| 021309071051 | 02130907 | Liberty Reservoir | PATAPSCO/BACK | CL | Low |
| 021309071052 | 02130907 | Liberty Reservoir | PATAPSCO/BACK | CL | Low |
| 021309071053 | 02130907 | Liberty Reservoir | PATAPSCO/BACK | CL | Low |
| 021309071054 | 02130907 | Liberty Reservoir | PATAPSCO/BACK | CL | Low |
| 021309071055 | 02130907 | Liberty Reservoir | PATAPSCO/BACK | CL | Low |
| 021309071056 | 02130907 | Liberty Reservoir | PATAPSCO/BACK | CL | Low |
| 021309071057 | 02130907 | Liberty Reservoir | PATAPSCO/BACK | CL | Low |
| 021309071058 | 02130907 | Liberty Reservoir | PATAPSCO/BACK | BA,CL | Low |
| 021309071059 | 02130907 | Liberty Reservoir | PATAPSCO/BACK | CL | Low |
| 021309071060 | 02130907 | Liberty Reservoir | PATAPSCO/BACK | CL | Low |
| 021309071061 | 02130907 | Liberty Reservoir | PATAPSCO/BACK | CL | Low |
| 021309071062 | 02130907 | Liberty Reservoir | PATAPSCO/BACK | CL | Low |
| 021309081020 | 02130908 | S Branch Patapsco | PATAPSCO/BACK | BA,CL,HO | Low |
| 021309081021 | 02130908 | S Branch Patapsco | PATAPSCO/BACK | CL | Low |

PRIORITY AREAS BY 12-DIGIT WATERSHED

| | | | | | | |
|--------------|----------|-----------------------|---------------------|-------------|-----|---|
| 021309081022 | 02130908 | S Branch Patapsco | PATAPSCO/BACK | CL,HO | Low | |
| 021309081023 | 02130908 | S Branch Patapsco | PATAPSCO/BACK | CL | Low | Y |
| 021309081024 | 02130908 | S Branch Patapsco | PATAPSCO/BACK | CL | Low | Y |
| 021309081025 | 02130908 | S Branch Patapsco | PATAPSCO/BACK | CL,HO | Low | Y |
| 021309081026 | 02130908 | S Branch Patapsco | PATAPSCO/BACK | CL | Low | |
| 021309081027 | 02130908 | S Branch Patapsco | PATAPSCO/BACK | CL,HO | Low | Y |
| 021309081028 | 02130908 | S Branch Patapsco | PATAPSCO/BACK | CL,FR,HO,MO | Low | Y |
| 021309081029 | 02130908 | S Branch Patapsco | PATAPSCO/BACK | CL | Low | |
| 021309081030 | 02130908 | S Branch Patapsco | PATAPSCO/BACK | CL | Low | |
| 021309081031 | 02130908 | S Branch Patapsco | PATAPSCO/BACK | CL | Low | |
| 021310020998 | 02131002 | Severn River | LOWER WESTERN SHORE | AA | Low | |
| 021310030987 | 02131003 | South River | LOWER WESTERN SHORE | AA | Low | |
| 021310030992 | 02131003 | South River | LOWER WESTERN SHORE | AA | Low | |
| 021310030994 | 02131003 | South River | LOWER WESTERN SHORE | AA | Low | |
| 021310030995 | 02131003 | South River | LOWER WESTERN SHORE | AA | Low | |
| 021310040983 | 02131004 | West River | LOWER WESTERN SHORE | AA | Low | |
| 021310040984 | 02131004 | West River | LOWER WESTERN SHORE | AA | Low | |
| 021310040985 | 02131004 | West River | LOWER WESTERN SHORE | AA | Low | |
| 021310040986 | 02131004 | West River | LOWER WESTERN SHORE | AA | Low | |
| 021310050974 | 02131005 | West Chesapeake Bay | LOWER WESTERN SHORE | CA | Low | |
| 021310050976 | 02131005 | West Chesapeake Bay | LOWER WESTERN SHORE | CA | Low | |
| 021310050977 | 02131005 | West Chesapeake Bay | LOWER WESTERN SHORE | CA | Low | |
| 021310050978 | 02131005 | West Chesapeake Bay | LOWER WESTERN SHORE | CA | Low | |
| 021310050979 | 02131005 | West Chesapeake Bay | LOWER WESTERN SHORE | AA,CA | Low | |
| 021311010867 | 02131101 | Patuxent River lower | PATUXENT | SM | Low | |
| 021311010868 | 02131101 | Patuxent River lower | PATUXENT | SM | Low | |
| 021311010875 | 02131101 | Patuxent River lower | PATUXENT | CA,SM | Low | |
| 021311010876 | 02131101 | Patuxent River lower | PATUXENT | CA,SM | Low | |
| 021311010877 | 02131101 | Patuxent River lower | PATUXENT | CA,SM | Low | |
| 021311010878 | 02131101 | Patuxent River lower | PATUXENT | CA,SM | Low | |
| 021311010879 | 02131101 | Patuxent River lower | PATUXENT | CA | Low | |
| 021311010880 | 02131101 | Patuxent River lower | PATUXENT | SM | Low | |
| 021311010881 | 02131101 | Patuxent River lower | PATUXENT | CA | Low | |
| 021311010882 | 02131101 | Patuxent River lower | PATUXENT | CA,CH,SM | Low | |
| 021311010883 | 02131101 | Patuxent River lower | PATUXENT | CA,SM | Low | |
| 021311010884 | 02131101 | Patuxent River lower | PATUXENT | CA,SM | Low | |
| 021311010885 | 02131101 | Patuxent River lower | PATUXENT | SM | Low | |
| 021311010886 | 02131101 | Patuxent River lower | PATUXENT | SM | Low | |
| 021311010887 | 02131101 | Patuxent River lower | PATUXENT | CA,CH,SM | Low | |
| 021311010888 | 02131101 | Patuxent River lower | PATUXENT | CA,CH,PG | Low | |
| 021311010889 | 02131101 | Patuxent River lower | PATUXENT | CA,PG | Low | |
| 021311010890 | 02131101 | Patuxent River lower | PATUXENT | CA,CH,PG | Low | |
| 021311010891 | 02131101 | Patuxent River lower | PATUXENT | CA,PG | Low | |
| 021311010892 | 02131101 | Patuxent River lower | PATUXENT | CH,PG | Low | |
| 021311010893 | 02131101 | Patuxent River lower | PATUXENT | CH,PG | Low | |
| 021311010894 | 02131101 | Patuxent River lower | PATUXENT | CA,PG | Low | |
| 021311010895 | 02131101 | Patuxent River lower | PATUXENT | CA,PG | Low | |
| 021311010896 | 02131101 | Patuxent River lower | PATUXENT | CA,PG | Low | |
| 021311010897 | 02131101 | Patuxent River lower | PATUXENT | PG | Low | |
| 021311010898 | 02131101 | Patuxent River lower | PATUXENT | CA,PG | Low | |
| 021311010899 | 02131101 | Patuxent River lower | PATUXENT | CA,PG | Low | |
| 021311010900 | 02131101 | Patuxent River lower | PATUXENT | CA,PG | Low | |
| 021311010901 | 02131101 | Patuxent River lower | PATUXENT | CA,PG | Low | |
| 021311010902 | 02131101 | Patuxent River lower | PATUXENT | AA,CA,PG | Low | |
| 021311010903 | 02131101 | Patuxent River lower | PATUXENT | CA,PG | Low | |
| 021311010904 | 02131101 | Patuxent River lower | PATUXENT | PG | Low | |
| 021311020905 | 02131102 | Patuxent River middle | PATUXENT | PG | Low | |
| 021311020906 | 02131102 | Patuxent River middle | PATUXENT | CA,PG | Low | |
| 021311020907 | 02131102 | Patuxent River middle | PATUXENT | PG | Low | |

PRIORITY AREAS BY 12-DIGIT WATERSHED

| | | | | | | |
|--------------|----------|-----------------------|---------------|----------|-----|---|
| 021311020908 | 02131102 | Patuxent River middle | PATUXENT | AA,CA,PG | Low | |
| 021311020909 | 02131102 | Patuxent River middle | PATUXENT | AA,CA | Low | |
| 021311020910 | 02131102 | Patuxent River middle | PATUXENT | AA,CA | Low | |
| 021311020914 | 02131102 | Patuxent River middle | PATUXENT | AA,PG | Low | |
| 021311020915 | 02131102 | Patuxent River middle | PATUXENT | AA,PG | Low | |
| 021311020916 | 02131102 | Patuxent River middle | PATUXENT | AA | Low | |
| 021311020917 | 02131102 | Patuxent River middle | PATUXENT | AA,PG | Low | |
| 021311040930 | 02131104 | Patuxent River upper | PATUXENT | AA | Low | |
| 021311040931 | 02131104 | Patuxent River upper | PATUXENT | AA,PG | Low | |
| 021311040932 | 02131104 | Patuxent River upper | PATUXENT | AA,PG | Low | |
| 021311040933 | 02131104 | Patuxent River upper | PATUXENT | PG | Low | |
| 021311040934 | 02131104 | Patuxent River upper | PATUXENT | AA,PG | Low | |
| 021311060959 | 02131106 | Middle Patuxent River | PATUXENT | HO | Low | |
| 021311060960 | 02131106 | Middle Patuxent River | PATUXENT | HO | Low | |
| 021311060961 | 02131106 | Middle Patuxent River | PATUXENT | HO | Low | |
| 021311060962 | 02131106 | Middle Patuxent River | PATUXENT | HO | Low | |
| 021311060963 | 02131106 | Middle Patuxent River | PATUXENT | HO | Low | |
| 021311060964 | 02131106 | Middle Patuxent River | PATUXENT | HO | Low | |
| 021311060965 | 02131106 | Middle Patuxent River | PATUXENT | HO | Low | |
| 021311070941 | 02131107 | Rocky Gorge Dam | PATUXENT | HO,MO,PG | Low | |
| 021311070942 | 02131107 | Rocky Gorge Dam | PATUXENT | HO,MO | Low | |
| 021311070943 | 02131107 | Rocky Gorge Dam | PATUXENT | MO | Low | |
| 021311070944 | 02131107 | Rocky Gorge Dam | PATUXENT | MO | Low | |
| 021311070945 | 02131107 | Rocky Gorge Dam | PATUXENT | MO | Low | |
| 021311080966 | 02131108 | Brighton Dam | PATUXENT | HO,MO | Low | |
| 021311080967 | 02131108 | Brighton Dam | PATUXENT | HO | Low | |
| 021311080968 | 02131108 | Brighton Dam | PATUXENT | HO | Low | |
| 021311080969 | 02131108 | Brighton Dam | PATUXENT | FR,HO,MO | Low | |
| 021311080970 | 02131108 | Brighton Dam | PATUXENT | HO | Low | |
| 021311080971 | 02131108 | Brighton Dam | PATUXENT | HO | Low | |
| 021311080972 | 02131108 | Brighton Dam | PATUXENT | HO | Low | |
| 021311080973 | 02131108 | Brighton Dam | PATUXENT | HO | Low | |
| 021401010694 | 02140101 | Potomac River L tidal | LOWER POTOMAC | SM | Low | |
| 021401010695 | 02140101 | Potomac River L tidal | LOWER POTOMAC | SM | Low | |
| 021401010696 | 02140101 | Potomac River L tidal | LOWER POTOMAC | SM | Low | |
| 021401010697 | 02140101 | Potomac River L tidal | LOWER POTOMAC | SM | Low | |
| 021401010698 | 02140101 | Potomac River L tidal | LOWER POTOMAC | SM | Low | |
| 021401010699 | 02140101 | Potomac River L tidal | LOWER POTOMAC | SM | Low | |
| 021401010700 | 02140101 | Potomac River L tidal | LOWER POTOMAC | SM | Low | |
| 021401010701 | 02140101 | Potomac River L tidal | LOWER POTOMAC | SM | Low | |
| 021401010702 | 02140101 | Potomac River L tidal | LOWER POTOMAC | CH,SM | Low | |
| 021401010703 | 02140101 | Potomac River L tidal | LOWER POTOMAC | CH | Low | |
| 021401010704 | 02140101 | Potomac River L tidal | LOWER POTOMAC | CH | Low | |
| 021401010705 | 02140101 | Potomac River L tidal | LOWER POTOMAC | CH | Low | |
| 021401010706 | 02140101 | Potomac River L tidal | LOWER POTOMAC | CH | Low | |
| 021401010707 | 02140101 | Potomac River L tidal | LOWER POTOMAC | CH | Low | |
| 021401010708 | 02140101 | Potomac River L tidal | LOWER POTOMAC | CH | Low | |
| 021401020789 | 02140102 | Potomac River M tidal | LOWER POTOMAC | CH | Low | |
| 021401020790 | 02140102 | Potomac River M tidal | LOWER POTOMAC | CH | Low | |
| 021401030709 | 02140103 | St. Mary's River | LOWER POTOMAC | SM | Low | Y |
| 021401030710 | 02140103 | St. Mary's River | LOWER POTOMAC | SM | Low | |
| 021401030711 | 02140103 | St. Mary's River | LOWER POTOMAC | SM | Low | |
| 021401030712 | 02140103 | St. Mary's River | LOWER POTOMAC | SM | Low | |
| 021401030713 | 02140103 | St. Mary's River | LOWER POTOMAC | SM | Low | Y |
| 021401030714 | 02140103 | St. Mary's River | LOWER POTOMAC | SM | Low | |
| 021401030715 | 02140103 | St. Mary's River | LOWER POTOMAC | SM | Low | |
| 021401030716 | 02140103 | St. Mary's River | LOWER POTOMAC | SM | Low | |
| 021401030717 | 02140103 | St. Mary's River | LOWER POTOMAC | SM | Low | |
| 021401030718 | 02140103 | St. Mary's River | LOWER POTOMAC | SM | Low | Y |

PRIORITY AREAS BY 12-DIGIT WATERSHED

| | | | | | |
|--------------|----------|-----------------------|----------------|-------|-----|
| 021401040720 | 02140104 | Breton Bay | LOWER POTOMAC | SM | Low |
| 021401040721 | 02140104 | Breton Bay | LOWER POTOMAC | SM | Low |
| 021401040722 | 02140104 | Breton Bay | LOWER POTOMAC | SM | Low |
| 021401040723 | 02140104 | Breton Bay | LOWER POTOMAC | SM | Low |
| 021401040724 | 02140104 | Breton Bay | LOWER POTOMAC | SM | Low |
| 021401050725 | 02140105 | St. Clements Bay | LOWER POTOMAC | SM | Low |
| 021401050726 | 02140105 | St. Clements Bay | LOWER POTOMAC | SM | Low |
| 021401050727 | 02140105 | St. Clements Bay | LOWER POTOMAC | SM | Low |
| 021401050728 | 02140105 | St. Clements Bay | LOWER POTOMAC | SM | Low |
| 021401050729 | 02140105 | St. Clements Bay | LOWER POTOMAC | SM | Low |
| 021401050730 | 02140105 | St. Clements Bay | LOWER POTOMAC | SM | Low |
| 021401050731 | 02140105 | St. Clements Bay | LOWER POTOMAC | SM | Low |
| 021401060732 | 02140106 | Wicomico River | LOWER POTOMAC | CH,SM | Low |
| 021401060733 | 02140106 | Wicomico River | LOWER POTOMAC | CH,SM | Low |
| 021401060734 | 02140106 | Wicomico River | LOWER POTOMAC | CH,SM | Low |
| 021401060736 | 02140106 | Wicomico River | LOWER POTOMAC | SM | Low |
| 021401060737 | 02140106 | Wicomico River | LOWER POTOMAC | SM | Low |
| 021401060738 | 02140106 | Wicomico River | LOWER POTOMAC | SM | Low |
| 021401060739 | 02140106 | Wicomico River | LOWER POTOMAC | CH,SM | Low |
| 021401060740 | 02140106 | Wicomico River | LOWER POTOMAC | CH,SM | Low |
| 021401060741 | 02140106 | Wicomico River | LOWER POTOMAC | SM | Low |
| 021401060742 | 02140106 | Wicomico River | LOWER POTOMAC | SM | Low |
| 021401060743 | 02140106 | Wicomico River | LOWER POTOMAC | SM | Low |
| 021401070744 | 02140107 | Gilbert Swamp | LOWER POTOMAC | CH | Low |
| 021401070745 | 02140107 | Gilbert Swamp | LOWER POTOMAC | CH | Low |
| 021401070746 | 02140107 | Gilbert Swamp | LOWER POTOMAC | CH,SM | Low |
| 021401070747 | 02140107 | Gilbert Swamp | LOWER POTOMAC | CH | Low |
| 021401070748 | 02140107 | Gilbert Swamp | LOWER POTOMAC | CH | Low |
| 021401070749 | 02140107 | Gilbert Swamp | LOWER POTOMAC | CH | Low |
| 021401070750 | 02140107 | Gilbert Swamp | LOWER POTOMAC | CH | Low |
| 021401070751 | 02140107 | Gilbert Swamp | LOWER POTOMAC | CH,SM | Low |
| 021401070752 | 02140107 | Gilbert Swamp | LOWER POTOMAC | CH,SM | Low |
| 021401070753 | 02140107 | Gilbert Swamp | LOWER POTOMAC | CH | Low |
| 021401080754 | 02140108 | Zekiah Swamp | LOWER POTOMAC | CH | Low |
| 021401080755 | 02140108 | Zekiah Swamp | LOWER POTOMAC | CH | Low |
| 021401080756 | 02140108 | Zekiah Swamp | LOWER POTOMAC | CH | Low |
| 021401080757 | 02140108 | Zekiah Swamp | LOWER POTOMAC | CH | Low |
| 021401080758 | 02140108 | Zekiah Swamp | LOWER POTOMAC | CH | Low |
| 021401080759 | 02140108 | Zekiah Swamp | LOWER POTOMAC | CH | Low |
| 021401080760 | 02140108 | Zekiah Swamp | LOWER POTOMAC | CH | Low |
| 021401080761 | 02140108 | Zekiah Swamp | LOWER POTOMAC | CH | Low |
| 021401080762 | 02140108 | Zekiah Swamp | LOWER POTOMAC | CH | Low |
| 021401080763 | 02140108 | Zekiah Swamp | LOWER POTOMAC | CH | Low |
| 021401080764 | 02140108 | Zekiah Swamp | LOWER POTOMAC | CH | Low |
| 021401080765 | 02140108 | Zekiah Swamp | LOWER POTOMAC | CH | Low |
| 021401080766 | 02140108 | Zekiah Swamp | LOWER POTOMAC | CH | Low |
| 021401080767 | 02140108 | Zekiah Swamp | LOWER POTOMAC | CH | Low |
| 021401080768 | 02140108 | Zekiah Swamp | LOWER POTOMAC | CH | Low |
| 021401080769 | 02140108 | Zekiah Swamp | LOWER POTOMAC | CH,PG | Low |
| 021401090770 | 02140109 | Port Tobacco River | LOWER POTOMAC | CH | Low |
| 021401090771 | 02140109 | Port Tobacco River | LOWER POTOMAC | CH | Low |
| 021401090772 | 02140109 | Port Tobacco River | LOWER POTOMAC | CH | Low |
| 021401100775 | 02140110 | Nanjemoy Creek | LOWER POTOMAC | CH | Low |
| 021401100776 | 02140110 | Nanjemoy Creek | LOWER POTOMAC | CH | Low |
| 021401100777 | 02140110 | Nanjemoy Creek | LOWER POTOMAC | CH | Low |
| 021401100778 | 02140110 | Nanjemoy Creek | LOWER POTOMAC | CH | Low |
| 021401100779 | 02140110 | Nanjemoy Creek | LOWER POTOMAC | CH | Low |
| 021402020847 | 02140202 | Potomac River MO Cnty | MIDDLE POTOMAC | MO | Low |
| 021402020849 | 02140202 | Potomac River MO Cnty | MIDDLE POTOMAC | MO | Low |

PRIORITY AREAS BY 12-DIGIT WATERSHED

| | | | | | |
|--------------|----------|-----------------------|----------------|-------|-----|
| 021402020851 | 02140202 | Potomac River MO Cnty | MIDDLE POTOMAC | MO | Low |
| 021402020852 | 02140202 | Potomac River MO Cnty | MIDDLE POTOMAC | MO | Low |
| 021402020853 | 02140202 | Potomac River MO Cnty | MIDDLE POTOMAC | FR,MO | Low |
| 021402080854 | 02140208 | Seneca Creek | MIDDLE POTOMAC | MO | Low |
| 021402080855 | 02140208 | Seneca Creek | MIDDLE POTOMAC | MO | Low |
| 021402080856 | 02140208 | Seneca Creek | MIDDLE POTOMAC | MO | Low |
| 021402080858 | 02140208 | Seneca Creek | MIDDLE POTOMAC | MO | Low |
| 021402080859 | 02140208 | Seneca Creek | MIDDLE POTOMAC | MO | Low |
| 021402080861 | 02140208 | Seneca Creek | MIDDLE POTOMAC | MO | Low |
| 021403010206 | 02140301 | Potomac River FR Cnty | UPPER POTOMAC | WA | Low |
| 021403010207 | 02140301 | Potomac River FR Cnty | UPPER POTOMAC | FR,WA | Low |
| 021403010208 | 02140301 | Potomac River FR Cnty | UPPER POTOMAC | FR,WA | Low |
| 021403010209 | 02140301 | Potomac River FR Cnty | UPPER POTOMAC | FR | Low |
| 021403010210 | 02140301 | Potomac River FR Cnty | UPPER POTOMAC | FR | Low |
| 021403010211 | 02140301 | Potomac River FR Cnty | UPPER POTOMAC | FR,MO | Low |
| 021403020222 | 02140302 | Lower Monocacy River | UPPER POTOMAC | FR,MO | Low |
| 021403020223 | 02140302 | Lower Monocacy River | UPPER POTOMAC | FR,MO | Low |
| 021403020224 | 02140302 | Lower Monocacy River | UPPER POTOMAC | FR | Low |
| 021403020225 | 02140302 | Lower Monocacy River | UPPER POTOMAC | FR,MO | Low |
| 021403020226 | 02140302 | Lower Monocacy River | UPPER POTOMAC | FR,MO | Low |
| 021403020235 | 02140302 | Lower Monocacy River | UPPER POTOMAC | CL,FR | Low |
| 021403020238 | 02140302 | Lower Monocacy River | UPPER POTOMAC | CL,FR | Low |
| 021403030250 | 02140303 | Upper Monocacy River | UPPER POTOMAC | FR | Low |
| 021403030253 | 02140303 | Upper Monocacy River | UPPER POTOMAC | FR,WA | Low |
| 021403030258 | 02140303 | Upper Monocacy River | UPPER POTOMAC | FR,WA | Low |
| 021403030260 | 02140303 | Upper Monocacy River | UPPER POTOMAC | FR | Low |
| 021403030262 | 02140303 | Upper Monocacy River | UPPER POTOMAC | CL,FR | Low |
| 021403030263 | 02140303 | Upper Monocacy River | UPPER POTOMAC | CL | Low |
| 021403040268 | 02140304 | Double Pipe Creek | UPPER POTOMAC | CL,FR | Low |
| 021403040269 | 02140304 | Double Pipe Creek | UPPER POTOMAC | CL,FR | Low |
| 021403040271 | 02140304 | Double Pipe Creek | UPPER POTOMAC | CL | Low |
| 021403040272 | 02140304 | Double Pipe Creek | UPPER POTOMAC | CL | Low |
| 021403040273 | 02140304 | Double Pipe Creek | UPPER POTOMAC | CL | Low |
| 021403040275 | 02140304 | Double Pipe Creek | UPPER POTOMAC | CL | Low |
| 021403040276 | 02140304 | Double Pipe Creek | UPPER POTOMAC | CL | Low |
| 021403040277 | 02140304 | Double Pipe Creek | UPPER POTOMAC | CL | Low |
| 021403040281 | 02140304 | Double Pipe Creek | UPPER POTOMAC | CL | Low |
| 021403040282 | 02140304 | Double Pipe Creek | UPPER POTOMAC | CL | Low |
| 021403040283 | 02140304 | Double Pipe Creek | UPPER POTOMAC | CL | Low |
| 021403040284 | 02140304 | Double Pipe Creek | UPPER POTOMAC | CL | Low |
| 021403040285 | 02140304 | Double Pipe Creek | UPPER POTOMAC | CL | Low |
| 021403040286 | 02140304 | Double Pipe Creek | UPPER POTOMAC | CL | Low |
| 021403040287 | 02140304 | Double Pipe Creek | UPPER POTOMAC | CL | Low |
| 021403040288 | 02140304 | Double Pipe Creek | UPPER POTOMAC | CL | Low |
| 021403050217 | 02140305 | Catoctin Creek | UPPER POTOMAC | FR | Low |
| 021403050218 | 02140305 | Catoctin Creek | UPPER POTOMAC | FR,WA | Low |
| 021403050219 | 02140305 | Catoctin Creek | UPPER POTOMAC | FR | Low |
| 021403050220 | 02140305 | Catoctin Creek | UPPER POTOMAC | FR,WA | Low |
| 021403050221 | 02140305 | Catoctin Creek | UPPER POTOMAC | FR,WA | Low |
| 021405010155 | 02140501 | Potomac River WA Cnty | UPPER POTOMAC | WA | Low |
| 021405010156 | 02140501 | Potomac River WA Cnty | UPPER POTOMAC | WA | Low |
| 021405010157 | 02140501 | Potomac River WA Cnty | UPPER POTOMAC | WA | Low |
| 021405010158 | 02140501 | Potomac River WA Cnty | UPPER POTOMAC | WA | Low |
| 021405010159 | 02140501 | Potomac River WA Cnty | UPPER POTOMAC | WA | Low |
| 021405010160 | 02140501 | Potomac River WA Cnty | UPPER POTOMAC | WA | Low |
| 021405010161 | 02140501 | Potomac River WA Cnty | UPPER POTOMAC | WA | Low |
| 021405010162 | 02140501 | Potomac River WA Cnty | UPPER POTOMAC | WA | Low |
| 021405010163 | 02140501 | Potomac River WA Cnty | UPPER POTOMAC | WA | Low |
| 021405010164 | 02140501 | Potomac River WA Cnty | UPPER POTOMAC | WA | Low |

PRIORITY AREAS BY 12-DIGIT WATERSHED

| | | | | | |
|--------------|----------|------------------------|---------------|-------|-----|
| 021405010165 | 02140501 | Potomac River WA Cnty | UPPER POTOMAC | WA | Low |
| 021405010166 | 02140501 | Potomac River WA Cnty | UPPER POTOMAC | WA | Low |
| 021405010167 | 02140501 | Potomac River WA Cnty | UPPER POTOMAC | WA | Low |
| 021405020187 | 02140502 | Antietam Creek | UPPER POTOMAC | WA | Low |
| 021405020192 | 02140502 | Antietam Creek | UPPER POTOMAC | FR,WA | Low |
| 021405020193 | 02140502 | Antietam Creek | UPPER POTOMAC | FR,WA | Low |
| 021405020194 | 02140502 | Antietam Creek | UPPER POTOMAC | FR,WA | Low |
| 021405020195 | 02140502 | Antietam Creek | UPPER POTOMAC | WA | Low |
| 021405020198 | 02140502 | Antietam Creek | UPPER POTOMAC | WA | Low |
| 021405020200 | 02140502 | Antietam Creek | UPPER POTOMAC | WA | Low |
| 021405020201 | 02140502 | Antietam Creek | UPPER POTOMAC | FR,WA | Low |
| 021405020204 | 02140502 | Antietam Creek | UPPER POTOMAC | WA | Low |
| 021405020205 | 02140502 | Antietam Creek | UPPER POTOMAC | FR,WA | Low |
| 021405030185 | 02140503 | Marsh Run | UPPER POTOMAC | WA | Low |
| 021405030186 | 02140503 | Marsh Run | UPPER POTOMAC | WA | Low |
| 021405050174 | 02140505 | Little Conococheague | UPPER POTOMAC | WA | Low |
| 021405050175 | 02140505 | Little Conococheague | UPPER POTOMAC | WA | Low |
| 021405050176 | 02140505 | Little Conococheague | UPPER POTOMAC | WA | Low |
| 021405060169 | 02140506 | Licking Creek | UPPER POTOMAC | WA | Low |
| 021405060170 | 02140506 | Licking Creek | UPPER POTOMAC | WA | Low |
| 021405060171 | 02140506 | Licking Creek | UPPER POTOMAC | WA | Low |
| 021405060172 | 02140506 | Licking Creek | UPPER POTOMAC | WA | Low |
| 021405060173 | 02140506 | Licking Creek | UPPER POTOMAC | WA | Low |
| 021405070168 | 02140507 | Tonoloway Creek | UPPER POTOMAC | WA | Low |
| 021405080109 | 02140508 | Potomac River AL Cnty | UPPER POTOMAC | AL | Low |
| 021405080110 | 02140508 | Potomac River AL Cnty | UPPER POTOMAC | AL | Low |
| 021405080111 | 02140508 | Potomac River AL Cnty | UPPER POTOMAC | AL | Low |
| 021405080112 | 02140508 | Potomac River AL Cnty | UPPER POTOMAC | AL | Low |
| 021405080113 | 02140508 | Potomac River AL Cnty | UPPER POTOMAC | AL | Low |
| 021405080114 | 02140508 | Potomac River AL Cnty | UPPER POTOMAC | AL | Low |
| 021405080115 | 02140508 | Potomac River AL Cnty | UPPER POTOMAC | AL | Low |
| 021405080116 | 02140508 | Potomac River AL Cnty | UPPER POTOMAC | AL | Low |
| 021405080117 | 02140508 | Potomac River AL Cnty | UPPER POTOMAC | AL,WA | Low |
| 021405080118 | 02140508 | Potomac River AL Cnty | UPPER POTOMAC | WA | Low |
| 021405080119 | 02140508 | Potomac River AL Cnty | UPPER POTOMAC | WA | Low |
| 021405080120 | 02140508 | Potomac River AL Cnty | UPPER POTOMAC | WA | Low |
| 021405080121 | 02140508 | Potomac River AL Cnty | UPPER POTOMAC | WA | Low |
| 021405090153 | 02140509 | Little Tonoloway Creek | UPPER POTOMAC | WA | Low |
| 021405090154 | 02140509 | Little Tonoloway Creek | UPPER POTOMAC | WA | Low |
| 021405100148 | 02140510 | Sideling Hill Creek | UPPER POTOMAC | AL,WA | Low |
| 021405100149 | 02140510 | Sideling Hill Creek | UPPER POTOMAC | AL,WA | Low |
| 021405100150 | 02140510 | Sideling Hill Creek | UPPER POTOMAC | AL | Low |
| 021405100151 | 02140510 | Sideling Hill Creek | UPPER POTOMAC | WA | Low |
| 021405100152 | 02140510 | Sideling Hill Creek | UPPER POTOMAC | AL,WA | Low |
| 021405110134 | 02140511 | Fifteen Mile Creek | UPPER POTOMAC | AL | Low |
| 021405110135 | 02140511 | Fifteen Mile Creek | UPPER POTOMAC | AL | Low |
| 021405110136 | 02140511 | Fifteen Mile Creek | UPPER POTOMAC | AL | Low |
| 021405110137 | 02140511 | Fifteen Mile Creek | UPPER POTOMAC | AL | Low |
| 021405110138 | 02140511 | Fifteen Mile Creek | UPPER POTOMAC | AL | Low |
| 021405110139 | 02140511 | Fifteen Mile Creek | UPPER POTOMAC | AL | Low |
| 021405110140 | 02140511 | Fifteen Mile Creek | UPPER POTOMAC | AL | Low |
| 021405110141 | 02140511 | Fifteen Mile Creek | UPPER POTOMAC | AL | Low |
| 021405110142 | 02140511 | Fifteen Mile Creek | UPPER POTOMAC | AL | Low |
| 021405110143 | 02140511 | Fifteen Mile Creek | UPPER POTOMAC | AL | Low |
| 021405110144 | 02140511 | Fifteen Mile Creek | UPPER POTOMAC | AL | Low |
| 021405110145 | 02140511 | Fifteen Mile Creek | UPPER POTOMAC | AL | Low |
| 021405110146 | 02140511 | Fifteen Mile Creek | UPPER POTOMAC | AL | Low |
| 021405110147 | 02140511 | Fifteen Mile Creek | UPPER POTOMAC | AL | Low |
| 021405120122 | 02140512 | Town Creek | UPPER POTOMAC | AL | Low |

Y

Y

PRIORITY AREAS BY 12-DIGIT WATERSHED

| | | | | | | |
|--------------|----------|--------------------------|---------------|-------|-----|---|
| 021405120123 | 02140512 | Town Creek | UPPER POTOMAC | AL | Low | Y |
| 021405120124 | 02140512 | Town Creek | UPPER POTOMAC | AL | Low | |
| 021405120125 | 02140512 | Town Creek | UPPER POTOMAC | AL | Low | |
| 021405120126 | 02140512 | Town Creek | UPPER POTOMAC | AL | Low | |
| 021405120127 | 02140512 | Town Creek | UPPER POTOMAC | AL | Low | |
| 021405120128 | 02140512 | Town Creek | UPPER POTOMAC | AL | Low | |
| 021405120129 | 02140512 | Town Creek | UPPER POTOMAC | AL | Low | |
| 021405120130 | 02140512 | Town Creek | UPPER POTOMAC | AL | Low | |
| 021405120131 | 02140512 | Town Creek | UPPER POTOMAC | AL | Low | |
| 021405120132 | 02140512 | Town Creek | UPPER POTOMAC | AL | Low | Y |
| 021405120133 | 02140512 | Town Creek | UPPER POTOMAC | AL | Low | |
| 021410010053 | 02141001 | Potomac River L N Branch | UPPER POTOMAC | AL | Low | |
| 021410010054 | 02141001 | Potomac River L N Branch | UPPER POTOMAC | AL | Low | |
| 021410010055 | 02141001 | Potomac River L N Branch | UPPER POTOMAC | AL | Low | |
| 021410010056 | 02141001 | Potomac River L N Branch | UPPER POTOMAC | AL | Low | |
| 021410010057 | 02141001 | Potomac River L N Branch | UPPER POTOMAC | AL | Low | Y |
| 021410010058 | 02141001 | Potomac River L N Branch | UPPER POTOMAC | AL | Low | Y |
| 021410010059 | 02141001 | Potomac River L N Branch | UPPER POTOMAC | AL | Low | Y |
| 021410010060 | 02141001 | Potomac River L N Branch | UPPER POTOMAC | AL | Low | Y |
| 021410010062 | 02141001 | Potomac River L N Branch | UPPER POTOMAC | AL | Low | |
| 021410010063 | 02141001 | Potomac River L N Branch | UPPER POTOMAC | AL | Low | |
| 021410010064 | 02141001 | Potomac River L N Branch | UPPER POTOMAC | AL | Low | Y |
| 021410010065 | 02141001 | Potomac River L N Branch | UPPER POTOMAC | AL | Low | |
| 021410010066 | 02141001 | Potomac River L N Branch | UPPER POTOMAC | AL | Low | |
| 021410010067 | 02141001 | Potomac River L N Branch | UPPER POTOMAC | AL | Low | |
| 021410010068 | 02141001 | Potomac River L N Branch | UPPER POTOMAC | AL | Low | |
| 021410010069 | 02141001 | Potomac River L N Branch | UPPER POTOMAC | AL | Low | |
| 021410010070 | 02141001 | Potomac River L N Branch | UPPER POTOMAC | AL | Low | Y |
| 021410010071 | 02141001 | Potomac River L N Branch | UPPER POTOMAC | AL | Low | |
| 021410010072 | 02141001 | Potomac River L N Branch | UPPER POTOMAC | AL | Low | |
| 021410010073 | 02141001 | Potomac River L N Branch | UPPER POTOMAC | AL | Low | |
| 021410020104 | 02141002 | Evitts Creek | UPPER POTOMAC | AL | Low | Y |
| 021410020105 | 02141002 | Evitts Creek | UPPER POTOMAC | AL | Low | Y |
| 021410020106 | 02141002 | Evitts Creek | UPPER POTOMAC | AL | Low | |
| 021410020107 | 02141002 | Evitts Creek | UPPER POTOMAC | AL | Low | Y |
| 021410020108 | 02141002 | Evitts Creek | UPPER POTOMAC | AL | Low | |
| 021410030095 | 02141003 | Wills Creek | UPPER POTOMAC | AL | Low | |
| 021410030096 | 02141003 | Wills Creek | UPPER POTOMAC | AL | Low | Y |
| 021410030097 | 02141003 | Wills Creek | UPPER POTOMAC | AL | Low | Y |
| 021410030098 | 02141003 | Wills Creek | UPPER POTOMAC | AL | Low | |
| 021410030099 | 02141003 | Wills Creek | UPPER POTOMAC | AL,GA | Low | Y |
| 021410030100 | 02141003 | Wills Creek | UPPER POTOMAC | AL | Low | |
| 021410030102 | 02141003 | Wills Creek | UPPER POTOMAC | AL | Low | |
| 021410030103 | 02141003 | Wills Creek | UPPER POTOMAC | AL | Low | |
| 021410040087 | 02141004 | Georges Creek | UPPER POTOMAC | AL,GA | Low | |
| 021410040088 | 02141004 | Georges Creek | UPPER POTOMAC | AL | Low | |
| 021410040089 | 02141004 | Georges Creek | UPPER POTOMAC | AL,GA | Low | |
| 021410040090 | 02141004 | Georges Creek | UPPER POTOMAC | AL,GA | Low | |
| 021410040091 | 02141004 | Georges Creek | UPPER POTOMAC | AL | Low | |
| 021410040092 | 02141004 | Georges Creek | UPPER POTOMAC | AL,GA | Low | |
| 021410040093 | 02141004 | Georges Creek | UPPER POTOMAC | AL,GA | Low | |
| 021410040094 | 02141004 | Georges Creek | UPPER POTOMAC | AL,GA | Low | |
| 021410050039 | 02141005 | Potomac River U N Branch | UPPER POTOMAC | GA | Low | |
| 021410050040 | 02141005 | Potomac River U N Branch | UPPER POTOMAC | GA | Low | Y |
| 021410050041 | 02141005 | Potomac River U N Branch | UPPER POTOMAC | GA | Low | Y |
| 021410050042 | 02141005 | Potomac River U N Branch | UPPER POTOMAC | GA | Low | |
| 021410050043 | 02141005 | Potomac River U N Branch | UPPER POTOMAC | GA | Low | Y |
| 021410050044 | 02141005 | Potomac River U N Branch | UPPER POTOMAC | GA | Low | |
| 021410050045 | 02141005 | Potomac River U N Branch | UPPER POTOMAC | GA | Low | |

PRIORITY AREAS BY 12-DIGIT WATERSHED

| | | | | | | |
|--------------|----------|--------------------------|---------------|-------|-----|---|
| 021410050046 | 02141005 | Potomac River U N Branch | UPPER POTOMAC | GA | Low | Y |
| 021410050047 | 02141005 | Potomac River U N Branch | UPPER POTOMAC | GA | Low | |
| 021410050048 | 02141005 | Potomac River U N Branch | UPPER POTOMAC | GA | Low | Y |
| 021410050049 | 02141005 | Potomac River U N Branch | UPPER POTOMAC | GA | Low | |
| 021410050050 | 02141005 | Potomac River U N Branch | UPPER POTOMAC | GA | Low | |
| 021410050051 | 02141005 | Potomac River U N Branch | UPPER POTOMAC | GA | Low | |
| 021410050052 | 02141005 | Potomac River U N Branch | UPPER POTOMAC | AL,GA | Low | |
| 021410060074 | 02141006 | Savage River | UPPER POTOMAC | GA | Low | |
| 021410060075 | 02141006 | Savage River | UPPER POTOMAC | AL,GA | Low | |
| 021410060076 | 02141006 | Savage River | UPPER POTOMAC | GA | Low | |
| 021410060077 | 02141006 | Savage River | UPPER POTOMAC | GA | Low | |
| 021410060078 | 02141006 | Savage River | UPPER POTOMAC | GA | Low | |
| 021410060079 | 02141006 | Savage River | UPPER POTOMAC | GA | Low | |
| 021410060080 | 02141006 | Savage River | UPPER POTOMAC | GA | Low | |
| 021410060081 | 02141006 | Savage River | UPPER POTOMAC | GA | Low | |
| 021410060082 | 02141006 | Savage River | UPPER POTOMAC | GA | Low | |
| 021410060083 | 02141006 | Savage River | UPPER POTOMAC | GA | Low | |
| 021410060084 | 02141006 | Savage River | UPPER POTOMAC | GA | Low | |
| 021410060085 | 02141006 | Savage River | UPPER POTOMAC | GA | Low | |
| 021410060086 | 02141006 | Savage River | UPPER POTOMAC | GA | Low | |