

Marine Spatial Planning in NOAA

Environmental Law Institute

July 28, 2009

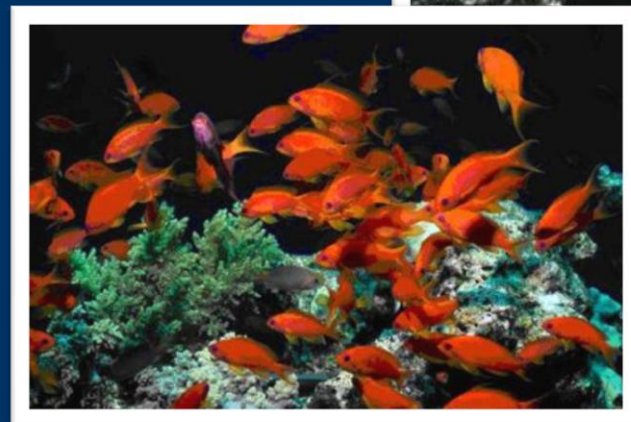
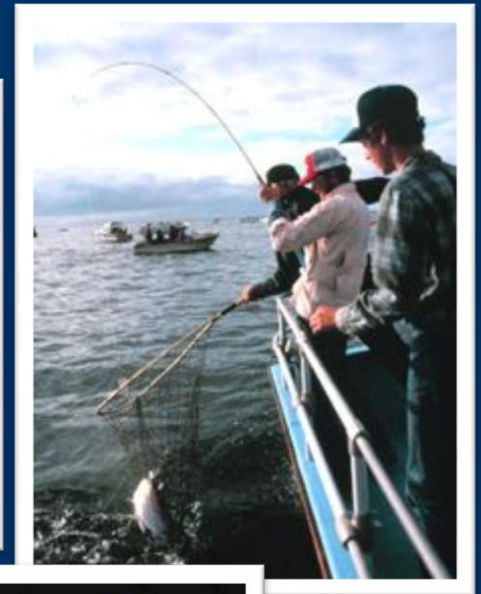
Margaret Davidson

Director, NOAA Coastal Services Center



NOAA Coastal Services Center
LINKING PEOPLE, INFORMATION, AND TECHNOLOGY

Balancing Competing Uses

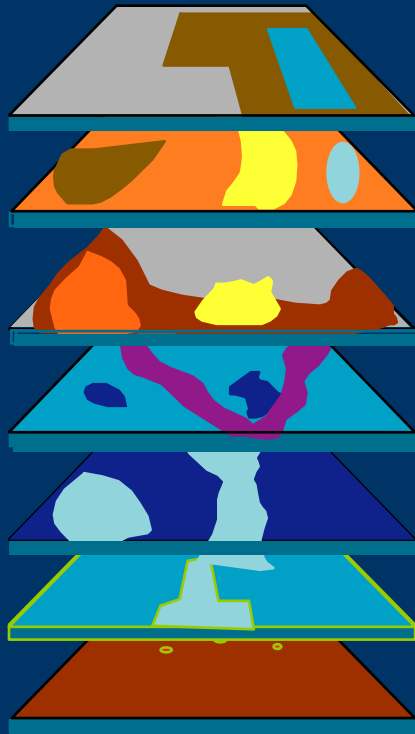


MSP Functions and Capabilities

- Spatially explicit ecosystem information
- Spatially explicit ocean use assessments
- Decision support tools
- Interagency coordination and capacity building
- Policy framework and leadership



Applying Geospatial Data and Analyses



Marine Cadastre

Georegulations

Marine Infrastructure

*Geology and Seafloor **

*Marine Habitat and Biodiversity **

*Human Uses **

Base Maps

* Denotes significant gaps in data



NOAA Coastal Services Center
LINKING PEOPLE, INFORMATION, AND TECHNOLOGY

Implementing MSP within NOAA

Marine Protected Area (MPA) Center

- Developing framework for a national system of MPAs
- Releasing analysis reports on “de facto” MPAs
- Ocean Uses Atlas

National Marine Fisheries Service

- Essential Fish Habitat Mapper
- Fisheries GIS Portal

NOAA Coastal Services Center

- Multipurpose Marine Cadastre
- Legislative Atlas
- Boundary making best practices

National Marine Sanctuary Program

- Rezoning the Florida Keys National Marine Sanctuary
- Balancing conservation objectives with public access



Multipurpose Marine Cadastre

Tools
Multipurpose Marine Cadastre
Produced and distributed by the NOAA Coastal Services Center and the U.S. Minerals Management Service

Overview Requirements In Action

This data viewer provides the baseline information needed to find the best location for renewable energy. The Multipurpose Marine Cadastre (MMC) is also a helpful tool for identifying critical habitat locations, and other important features to be avoided early in the planning process.

U.S. Marine Cadastre

LAYERS

- All Layers
- Jurisdictional Boundaries & Limits
- Federal Georegulations
- Navigation & Marine Infrastructure
- Proposed Energy Projects
- Geology & Seafloor Data
- Marine Habitat & Biodiversity
- Base Maps

Refresh Map

Auto Refresh

Data Download

Toggle All Symbology

Help:

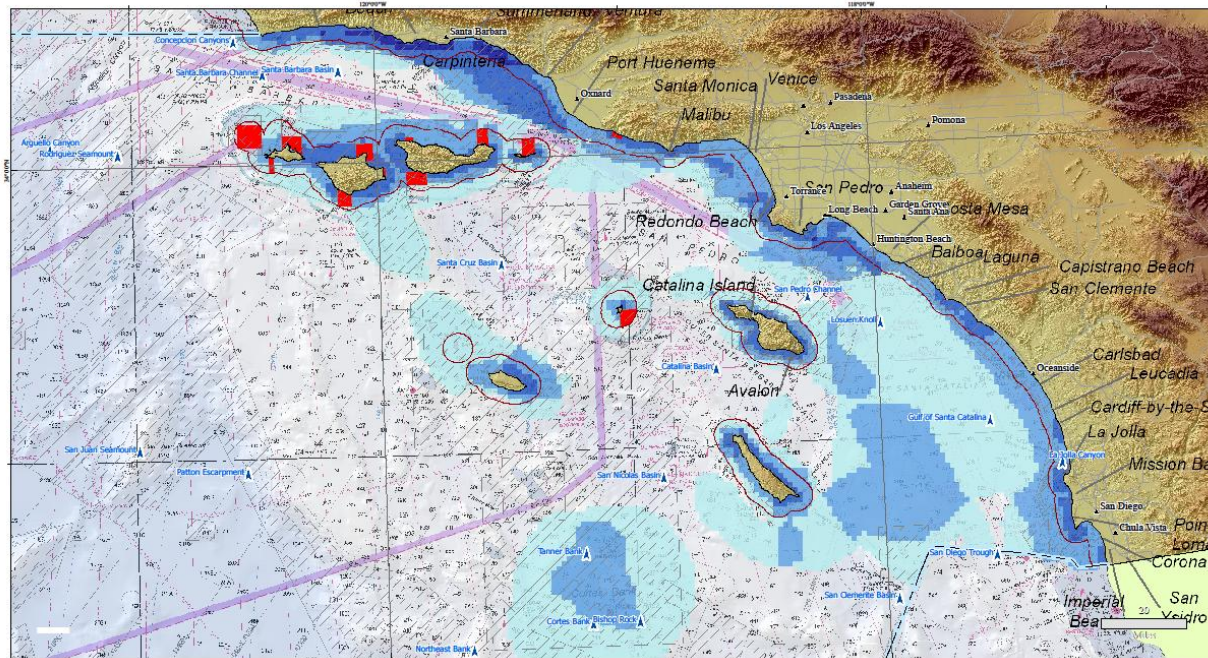
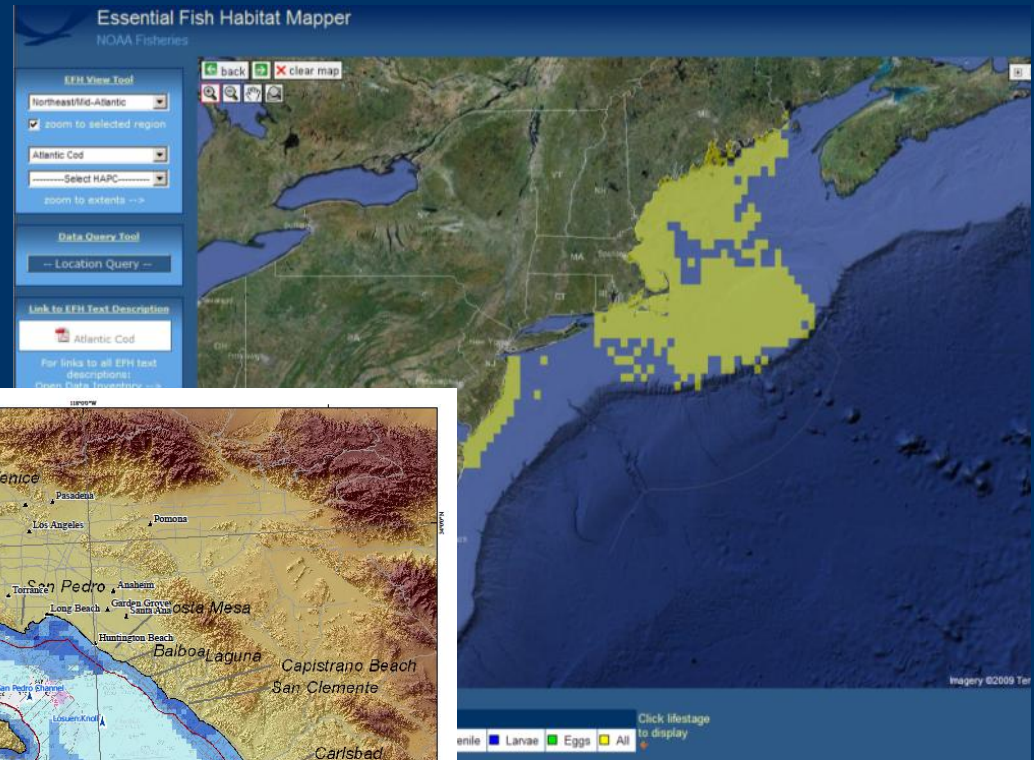
- A closed group, click to open.
- An open group, click to close.
- A hidden group/layer, click to make visible.
- A visible group/layer, click to hide.
- A partially visible group, click to make visible.
- An inactive layer, click to make active.
- The active layer.
- Additional information about this layer is available.

<http://www.csc.noaa.gov/digitalcoast/tools/mmc/index.html>

NOAA Coastal Services Center
Privacy policy
Contact CSC
Updated on February 21, 2008

Essential Fish Habitat Mapper

Ocean Uses Atlas



Ocean Uses Atlas: Southern California Region
Dominant Use Areas: Commercial Fishing

Submerged Features
 Atlas Southern California Region
 Restricted Fishing
 Commercial No-Take MPAs
 Dominant Use Count



DRAFT

January 2009

Draft mapping product for the California Ocean Uses Atlas Project. With funding provided by The Gordon and Betty Moore Foundation, The Resources Legacy Fund Foundation and NOAA's National MPA Center.



NOAA Coastal Services Center
LINKING PEOPLE, INFORMATION, AND TECHNOLOGY

Questions?

