

ELI ILF Webinar Series: Compensation Planning Framework

Steven Martin
Environmental Planner
Institute for Water Resources



®

US Army Corps of Engineers
BUILDING STRONG®



17 07 2003

9/14/10

ILF Reforms for Equivalency

- The rule retains ILF mitigation but with significant reforms:
 - ***Advance planning requirement***
 - Cap on “advance” credits
 - Financial accounting requirements
 - Similar admin/ecological standards as banks
 - Same public/IRT review process as banks



The Compensation Planning Framework (CPF) is a tool for strategic selection of mitigation projects

Objective: a mechanism to identify sites that meet aquatic resource needs in watershed

Guides selecting, securing, and implementing compensatory mitigation projects

- “Essentially a watershed plan”
- “Must support a **watershed approach**”



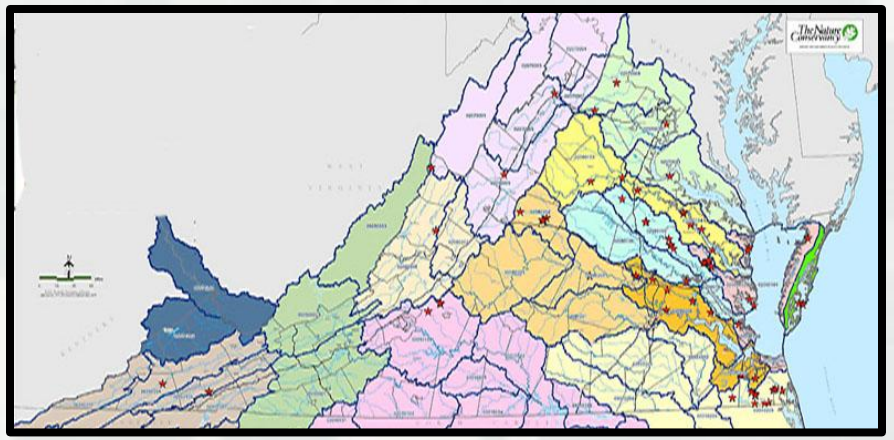
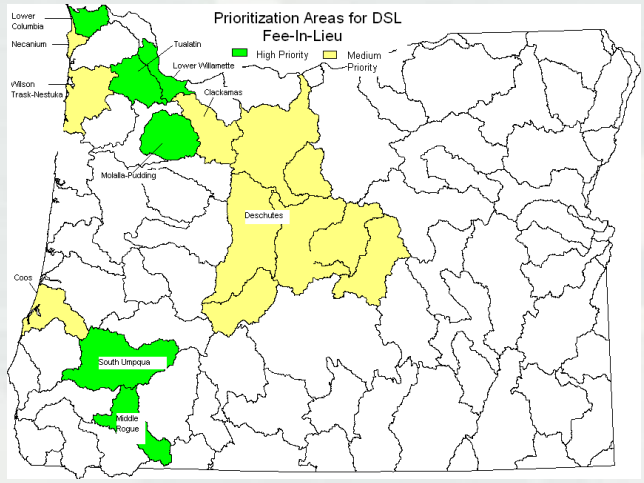
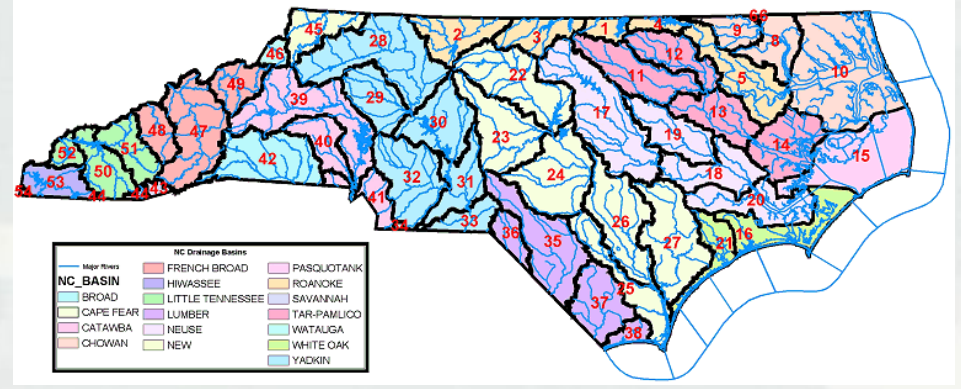
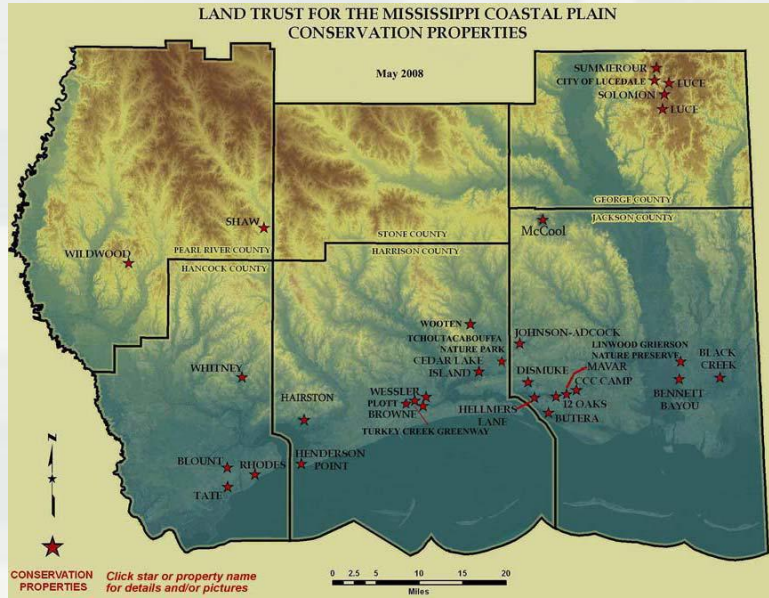
Compensation Planning Framework

10 Elements (33 CFR 332.8(c)):

- ▶ Service area
- ▶ Analysis of historic resource loss (and current condition)
- ▶ Threats
- ▶ How threats are addressed
- ▶ Goals and objectives
- ▶ Prioritization strategy
- ▶ Use of preservation
- ▶ Stakeholder involvement
- ▶ Long-term protection and management
- ▶ Evaluation and reporting



1. Service Area



BUILDING STRONG®

2. Analysis of **historic aquatic resource loss** in the service area(s)



3. An analysis of **current aquatic resource conditions** in the service area(s), supported by **field documentation**



BUILDING STRONG®

4. A description of the threats to aquatic resources in the service area(s)

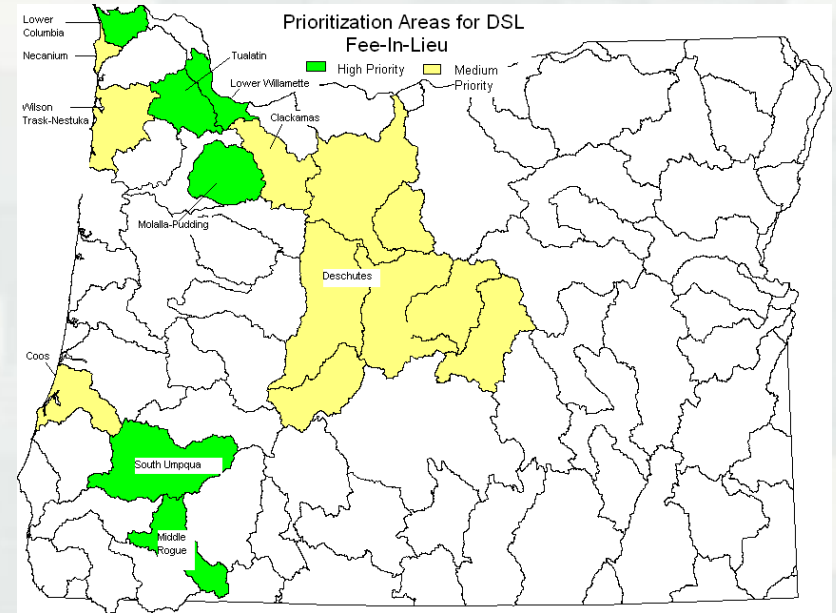
And how the in-lieu fee program will help **offset impacts** resulting from those threats

Consider **stressors** affecting:

- Water quality
- Hydrology
- Habitat



5. Statement of aquatic resource **goals and objectives** for each service area, including description of the **general amounts, types and locations of** aquatic resources the program will seek to provide



- Identifies priority watersheds
- Sets objectives for each priority watershed
- Identifies conservation opportunity areas from Oregon Conservation Strategy



OR Conservation Strategy – Lower Willamette

- Columbia River Bottomlands

Limiting Factors

- Urbanization
- Water quality

Restoration activities focus

- Restore water quality
- Reduce stormwater discharge
- Restore floodplain



6. A prioritization strategy for selecting and implementing compensatory mitigation activities

7. Explanation of how preservation objectives **addressed in the prioritization strategy** satisfy the criteria for use of preservation:

- Provides important functions
- Contributes to watershed sustainability
- Appropriate & practicable
- Permanently protected
- Under threat of destruction or adverse modification



8. Description of **stakeholder involvement in plan development and implementation**, including coordination with federal, state, tribal and local aquatic resource management and regulatory authorities

9. Description of the **long-term protection and management strategies for activities** conducted by the in-lieu fee program sponsor



10. Strategy for **periodic evaluation and reporting on the progress of the program in achieving goals and objectives**, including a process for revising the planning framework as necessary



Other approaches to CPF by ILFs:

- Riverside-Corona RCD - 24 sites
- East Contra Costa HCP (proposed)
- Living River Restoration Trust (Elizabeth River Project)

