

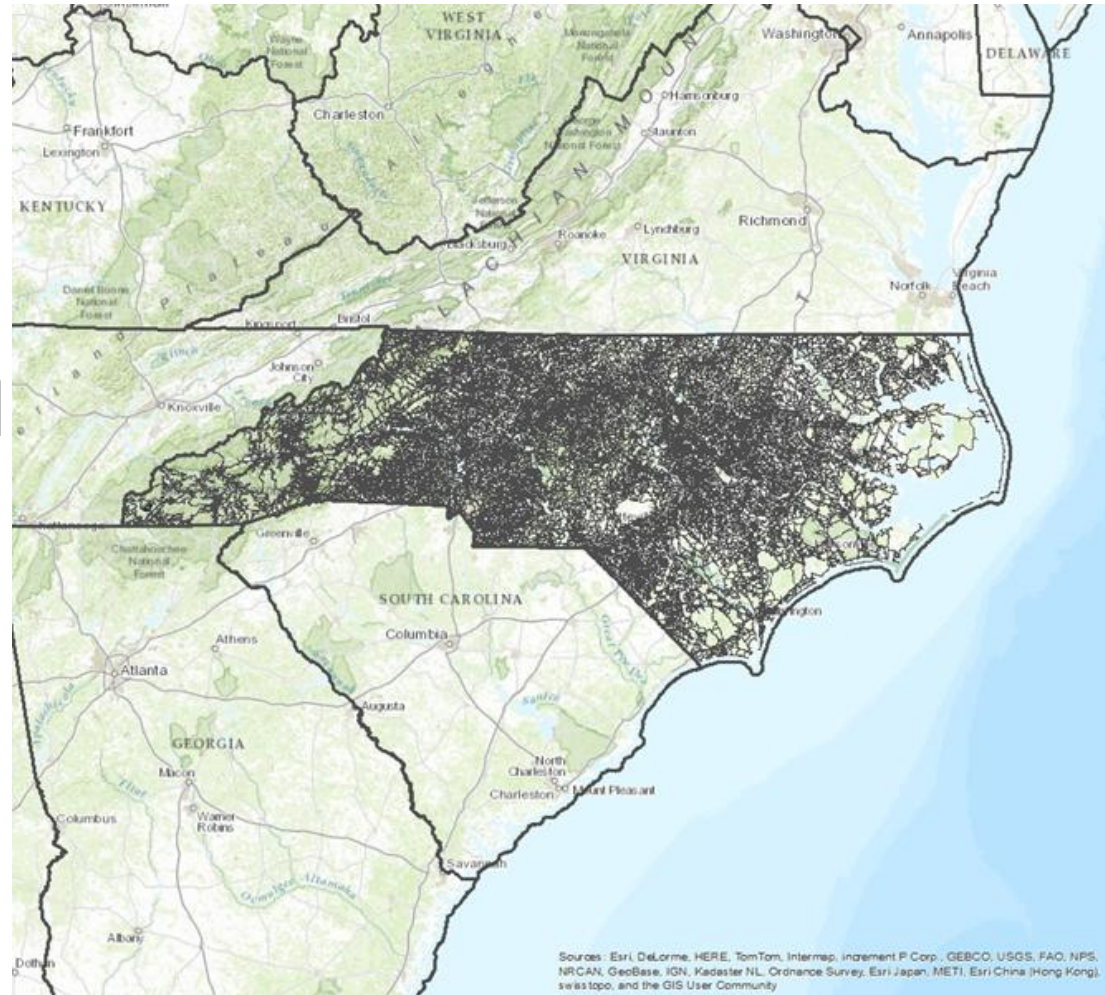
NC Water Resources and NCDOT

Coordinating TMDL Development

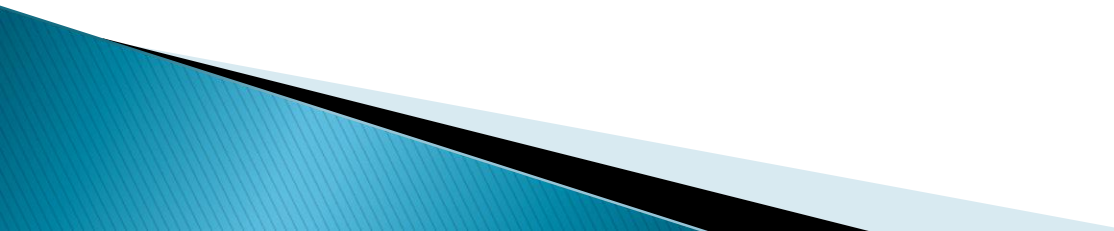


NCDOT has jurisdiction of almost all NC roads

- ▶ DOT is present in most watersheds
- ▶ Usually considered as a pollutant source.



NCDOT Role in TMDL Development

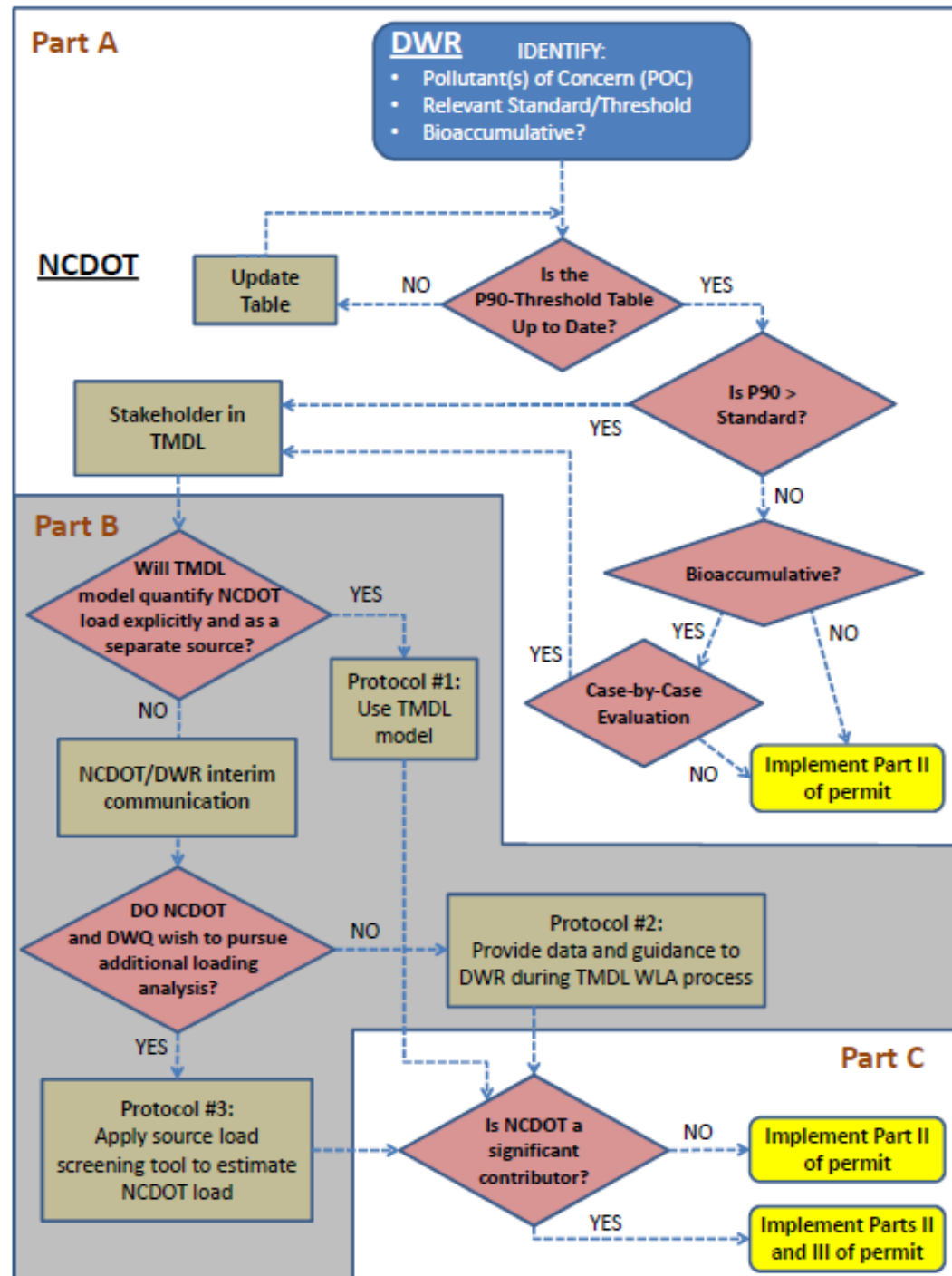
- ▶ Provide DWR with GIS information
 - Layer of DOT roads, road right-of-way, facilities
 - ▶ Runoff study data
 - Bridge deck runoff study
 - ▶ Internal review of TMDL
 - Resolve issues before the public comment period
- 

Category 4b – TMDL Alternative

- ▶ NCDOT, Burlington, & Graham, working on TMDL alternative for Little Alamance Creek
 - In lieu of an impervious cover TMDL
- ▶ This allows for collaboration and cooperation among jurisdictions to improve water quality
- ▶ Commitment letters from all, with complete 4b demonstration due in August 2014

A lingering question:

- ▶ How to determine if NCDOT is a significant contributor (consistently)?
- ▶ Currently working on a process to determine NCDOT contributor status in TMDLs



Prioritization

- ▶ DOT permit requirements require 70 BMP installations over each 5 year permit cycle.
 - DOT looks to DWR and other groups to help direct where BMPs should be implemented.
- ▶ After our prioritization process is complete we will be working with DOT to help implement BMPs where possible.

Questions?



Andy Painter
NC DWR Modeling and Assessment Branch
919-807-6409
andy.painter@ncdenr.gov