



Energy Commission's Role

- n **Energy Commission Permitting Authority**
 - **Power plants “50 Megawatts or Greater”**
 - **Related facilities:**
 - n **electric transmission lines**
 - n **water supply pipelines**
 - n **natural gas pipelines**
 - n **access roads**

- n **Lead state agency for California Environmental Quality Act (CEQA) – Warren-Alquist Act**



Overview of Licensing Process

1. Data Adequacy

- Minimum requirements to accept AFC and begin 12-month licensing proceeding

2. Staff Discovery and Analyses

- Data Requests
- Issues Identification
- Public Workshops
- Preliminary and Final Staff Assessments

3. Committee Evidentiary Hearing and Decision

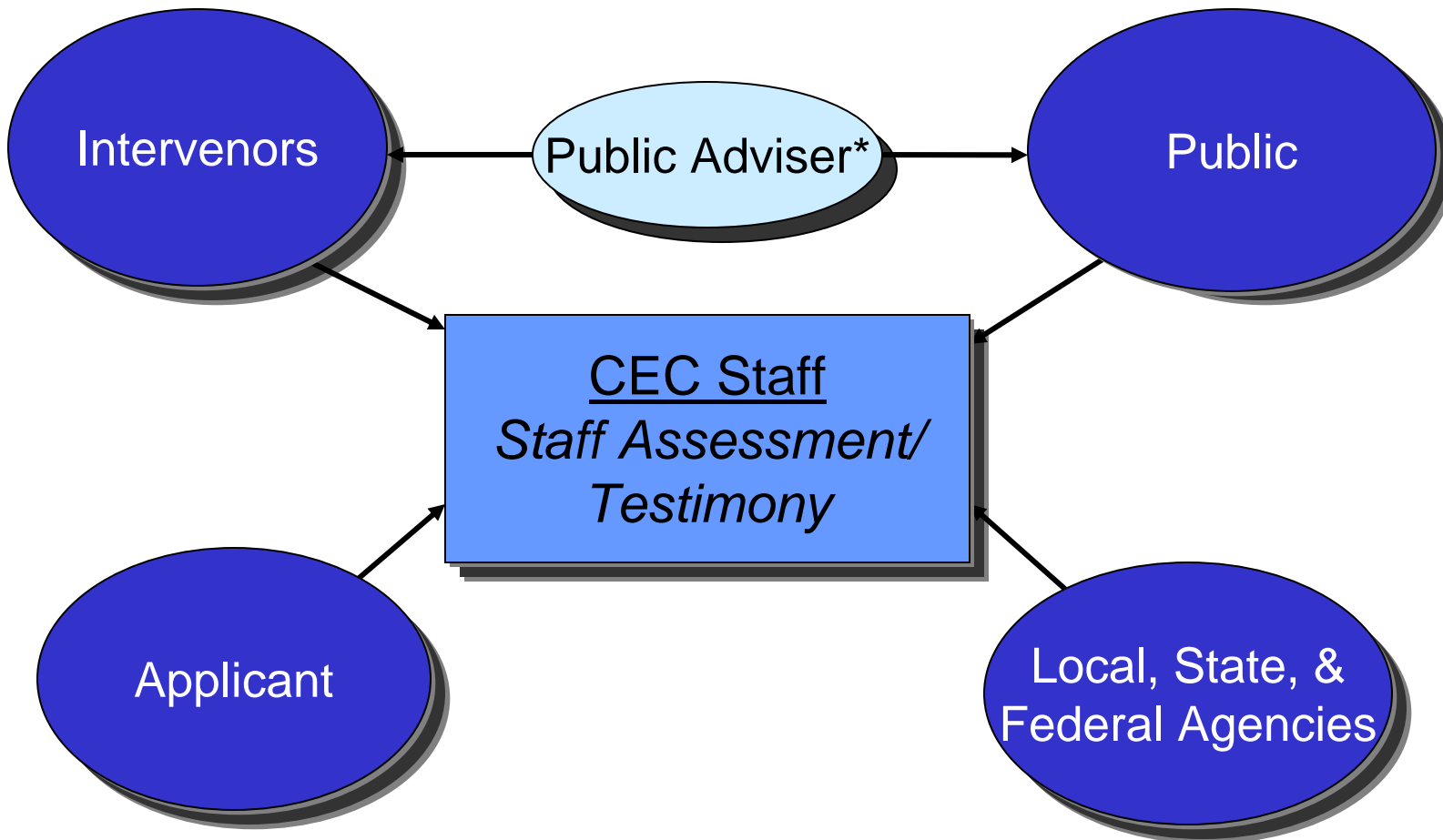
- Evidentiary Hearings on FSA and other information
- Presiding Member's Proposed Decision (PMPD)
- PMPD hearing and Commission decision



California Energy Commission



Discovery & Analysis Process



* The Public Adviser provides assistance on how to participate in the CEC's public process.

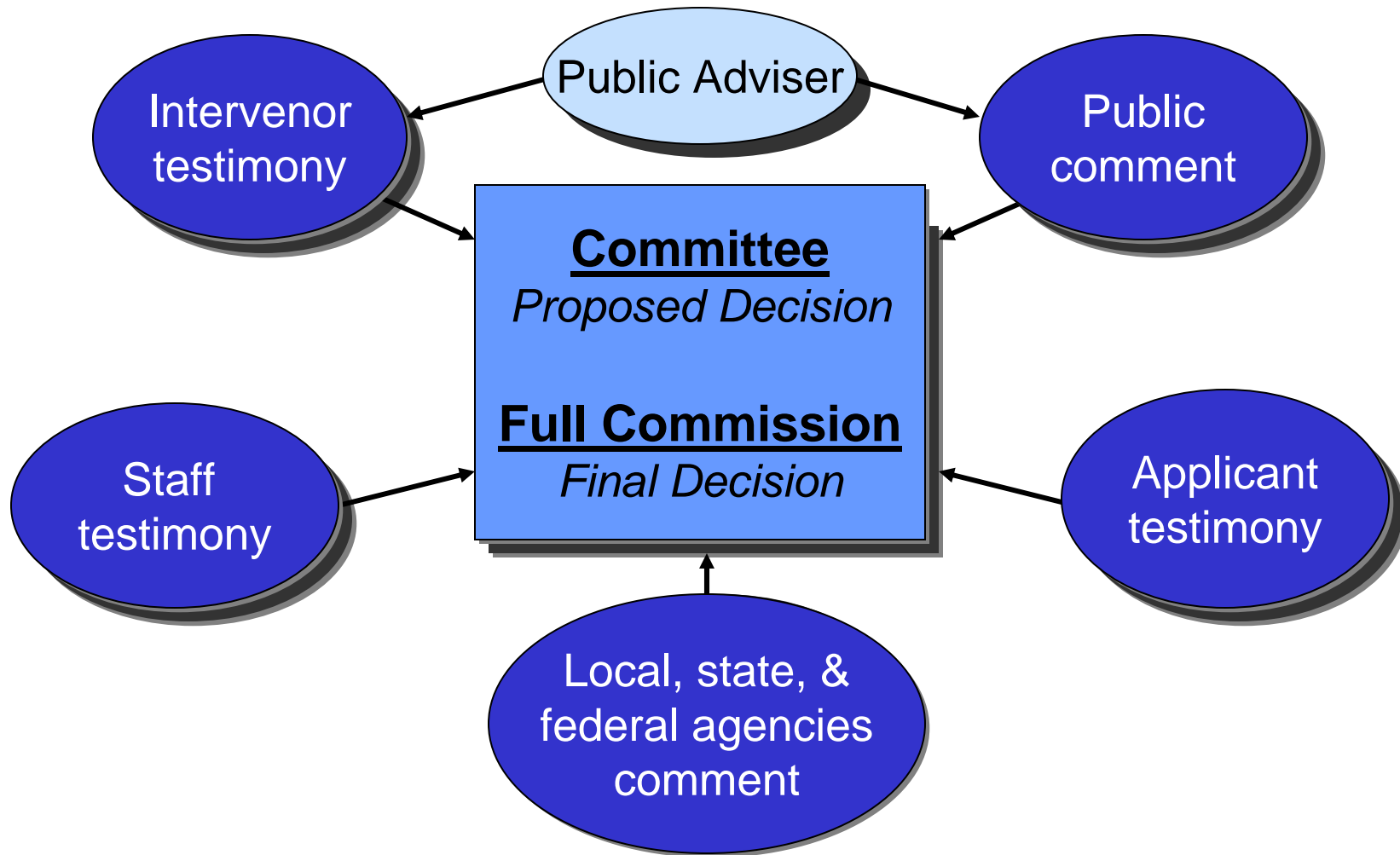


Discovery and Analysis Process

- n **Determine if proposal complies with Laws, Ordinances, Regulations, Standards (LORS)**
- n **Conduct engineering and environmental analyses**
 - identify issues and analyze project impacts
 - evaluate alternatives
 - identify mitigation measures to off-set project impacts
 - recommend conditions of certification
- n **Facilitate public and agency participation**
- n **Staff products: Preliminary Staff Assessment (PSA) and Final Staff Assessment (FSA)**
- n **Make recommendations to the Committee**



Evidentiary Hearing & Decision Process





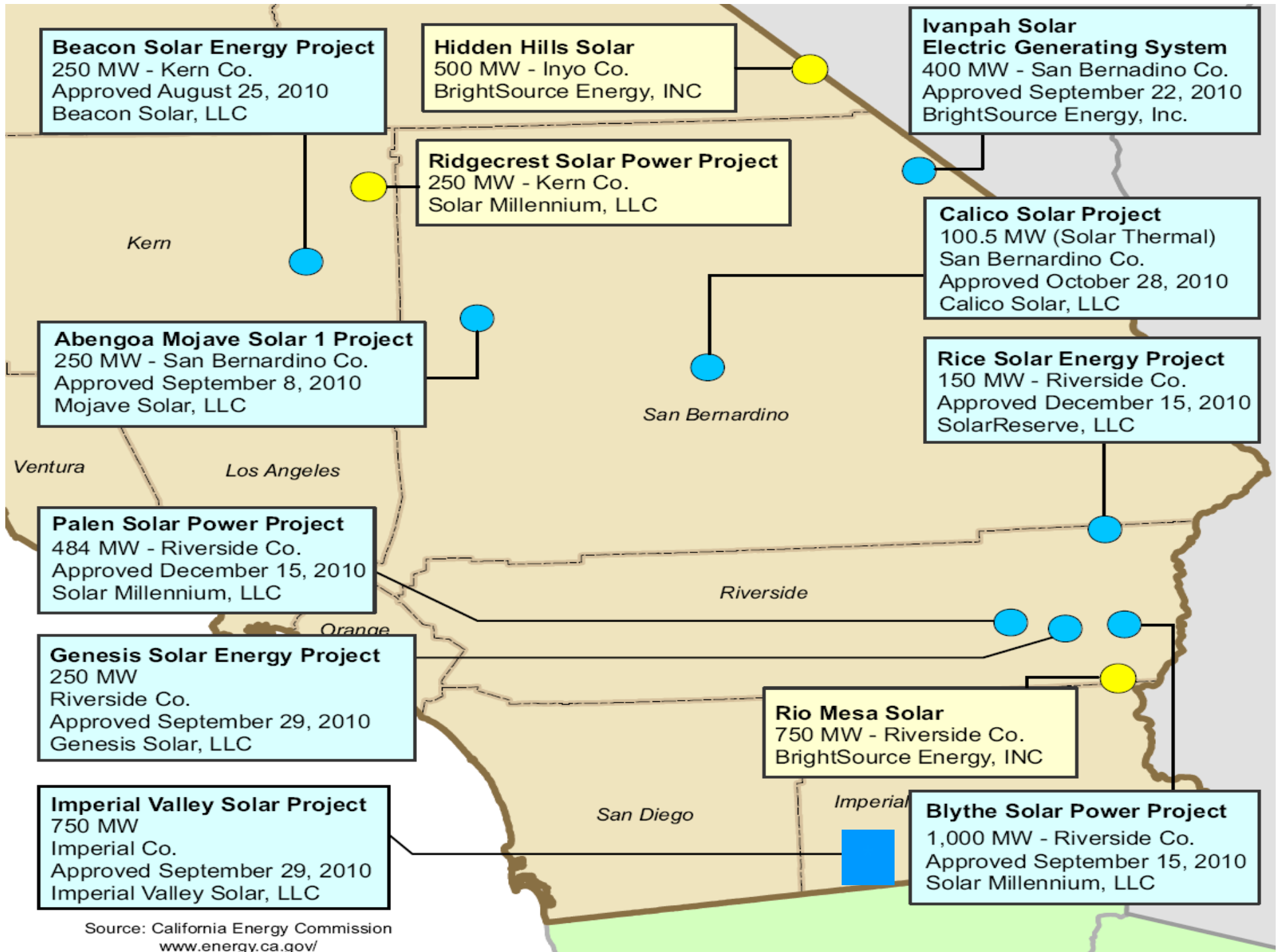
Evidentiary Hearing & Decision Process

- n **Committee conducts hearings on all information**
 - Issues Presiding Member's Proposed Decision (PMPD)
 - PMPD contains findings relating to:
 - n Environmental impacts, public health, engineering
 - n Project's compliance with LORS
 - n Recommends conditions of certification
 - n Recommends whether or not to approve the project
- n **Full Commission makes decision**
- n **Energy Commission monitors compliance with all conditions of certification, for the life of the project through de-commissioning and closure**



Local, State and Federal Agencies

- n **Staff works closely with local, state and federal agencies, for example, with Hidden Hills SEGS:**
 - **Local/Regional**
 - n Inyo County - Planning, Env. Health, Sheriff Department
 - n Big Basin Air Quality Management District (BBAQMD)
 - **State**
 - n California Department of Fish & Game (Bishop Field Office)
 - n Lahontan Regional Water Quality Control Board
 - **Federal**
 - n U.S. Fish & Wildlife Service (CA)
 - n U.S. Army Corps of Engineers
 - n Bureau of Land Management (CA and NV)



Source: California Energy Commission
www.energy.ca.gov/

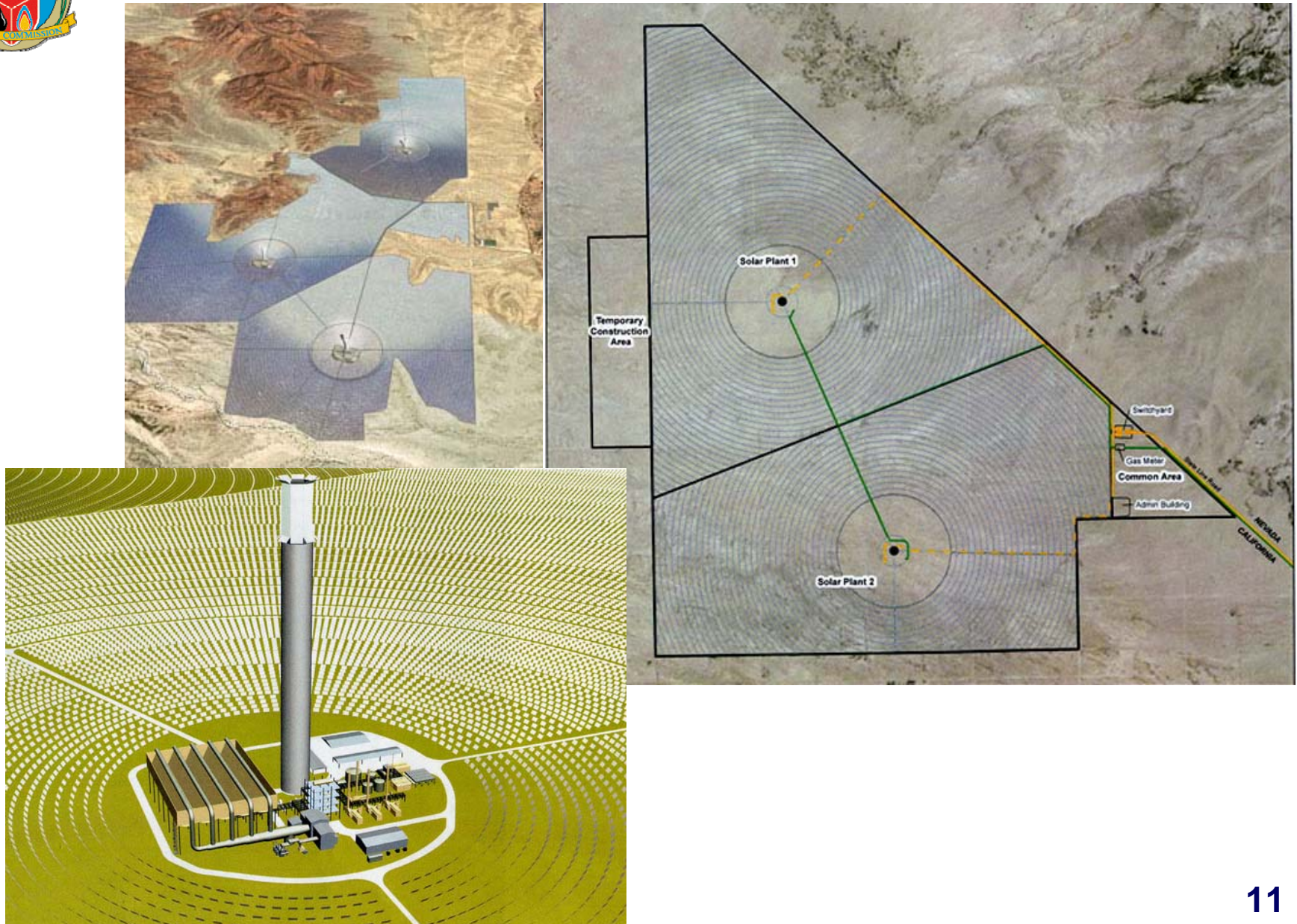


California Energy Commission





California Energy Commission





California Energy Commission

OII – “Lessons Learned” Process



California Energy Commission

OII – “Lessons Learned” Policy

- **Hydrological impacts and water supply reliability**
- **Land use constraints including availability of large tracts of developable land**
- **Impacts to biological and cultural resources, associated mitigation strategies**
- **Transmission line constraints**
- **Visual and/or Recreation/Open Space issues**
- **Local agency and public participation**
- **Siting Process consistency; cumulative analyses determinations/definitions**
- **CEQA equivalency; Alternatives analyses and NEPA coordination₁₃**



California Energy Commission

