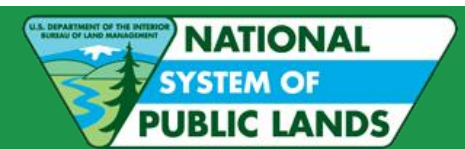




# THE “PERFECT STORM” FOR RENEWABLE ENERGY: POLICY DRIVERS AND DECISION- MAKING



Ashley Conrad-Saydah, September 29, 2010  
U.S. Bureau of Land Management, California State Office

# Objectives: how did we get here?

- Where is “here”?
- Policy drivers
- Response and innovation
- Shifting landscapes
- Next generation projects
  - ▣ Policy needs?





# You are **here**: Fast Track Status

[http://www.blm.gov/wo/st/en/prog/energy/renewable\\_energy/fast-track\\_renewable.html](http://www.blm.gov/wo/st/en/prog/energy/renewable_energy/fast-track_renewable.html)

## Solar Fast Track Projects

Sonoran Solar (AZ)	375 MW	<b>Final</b> EIS pending
Stirling Imperial (CA)	709 MW	<b>ROD</b> pending
Stirling Calico (CA)	850 MW	<b>ROD</b> EIS pending
Ivanpah (CA)	400 MW	<b>ROD</b> pending
Desert Sunlight (CA)	350 MW	<b>Final</b> EIS pending
Palen (CA)	484 MW	<b>Final</b> EIS pending
Blythe (CA)	986 MW	<b>ROD</b> pending
Ridgecrest (CA)	745 MW	<b>Final</b> EIS pending
Genesis (CA)	250 MW	<b>ROD</b> pending
Lucerne Valley (CA)	45 MW	<b>ROD</b> pending
Silver State N/S (NV)	400 MW	<b>ROD</b> pending
Crescent Dunes (NV)	180 MW	<b>Final</b> EIS pending
Amargosa Farm Road (NV)	484 MW	<b>Final</b> EIS pending

## Wind Fast Track Projects

Tule Wind (CA)	200 MW	Draft EIS pending
Daggett Ridge (CA)	84 MW	Draft EIS pending
Granite Mountain (CA)	74 MW	<b>Final</b> EIS pending
Searchlight (NV)	200 MW	Draft EIS pending
Spring Valley (NV)	150 MW	EA being prepared
West Butte (OR)	60 MW	<b>Final</b> EIS pending
Sand Hills Ranch (WY)	50 MW	EA being prepared

3 GW of solar with RODs pending in 2010



# Drivers: Renewable Energy Priority

## Energy Policy Act of 2005

- Section 211 – 10,000 MWs of non-hydro renewable energy projects on public land by 2015

## President – New Energy for America Plan

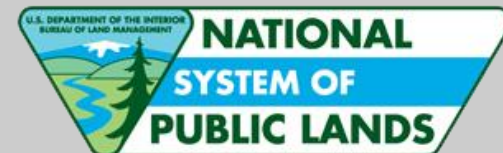
- Ensure 10 percent of electricity from renewable energy by 2012 and 25 percent by 2025

## Secretary – New Energy Frontier

- DOI goal - 9,000 MWs by 2011 and 10,000 MWs by 2012
- Secretary Order – March 2009
- Development of renewable energy is Department priority

## American Recovery and Reinvestment Act

- Drove permitting targets



# Response and Innovation

## □ Memoranda of Understanding

- November, 2008 – BLM and CA
  - Codified the Renewable Energy Action Team (REAT)
- October, 2009 – CA and the Department of Interior
  - Defined State and Federal roles in the Desert Renewable Energy Conservation Plan
  - Established Renewable Energy Policy Group
- BLM and other agencies
  - Intent: increase permitting efficiencies

## Solar Programmatic Environmental Impact Statement (PEIS)

- Shift from west-wide analysis to “zone” analysis

## Renewable Energy Coordination Offices

- Clustered staffing in renewable energy hotspots



# Response and Innovation

- Establish Renewable Energy Coordination Offices – 66 positions
  - National Office                   6 positions
  - Arizona                           11 positions
  - California                       23 positions
  - Nevada                           17 positions
  - Wyoming                         9 positions
  
- Renewable Energy Support Teams – 40 positions
  - Colorado                         11 positions
  - Idaho                              6 positions
  - Montana                         5 positions
  - New Mexico                    3 positions
  - OR/WA                           4 positions
  - Utah                              11 positions



# Shifting Landscapes: Renewable Energy on the Public Lands



Potential - 206,000 MWs  
(20.6 Million Acres)



SEGS plant; Wikipedia Commons

Potential up to 2,300,000 MWs  
(23 Million Acres)



# Wind Energy – Status

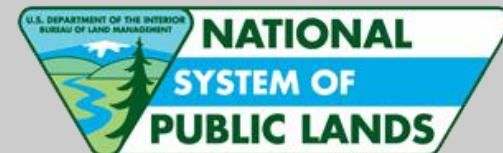


## Status

- Programmatic EIS – June 2005
- 185 site testing authorizations
- 28 development authorizations  
(437 MWs installed capacity – CA, WY, AZ, UT)
- 39 pending development applications  
(5,000 MWs )
- 7 Fast Track projects  
(800 MWs)
- 200 site testing applications

## Challenges

- NEPA
- Birds (MBTA), Bats and Sage Grouse
- Visual resources
- Airspace and radar





# Solar – Status

## Status

- Programmatic EIS underway
  - 24 Solar Energy Study Areas
- 131 Active Applications (1.3 million acres)
  - 14 Fast Track projects (4,500 MWs)



## Challenges

- NEPA
- Intensive single-use land allocation
- Large land disturbance footprint
- Water demand (solar thermal)
- Sensitive wildlife habitat
- Visual resource impacts
- Military and aviation operations
- Other resource impacts

# Limitations

- Jurisdiction
  - Affects alternatives analysis
- Data
- Pre- and post-construction monitoring
- Regulations and policy
- Others...



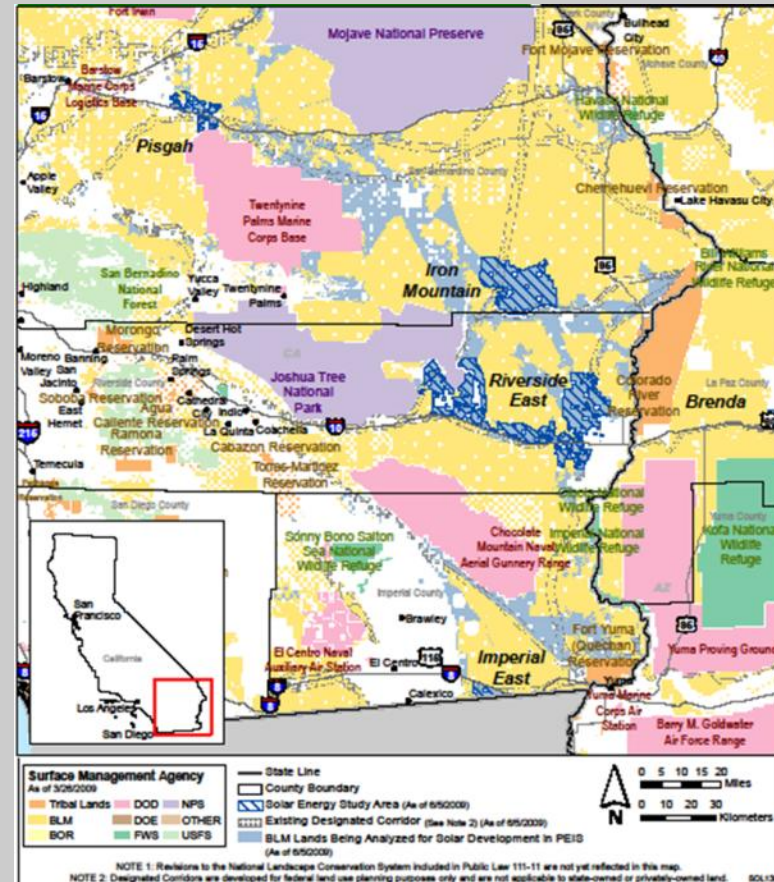
# BLM's Path Forward

- Solar Programmatic Environmental Impact Statement

- Draft EIS – Dec 2010
- Final EIS – fall 2011

- 24 Solar Energy Study Areas

Arizona	3 Study Areas	(16,500 acres)
California	4 Study Areas	(351,000 acres)
Colorado	4 Study Areas	(20,900 acres)
Nevada	7 Study Areas	(149,400 acres)
New Mexico	3 Study Areas	(121,500 acres)
Utah	3 Study Areas	(16,800 acres)





# California Desert BLM District Offices

## Renewable Energy Projects and Utility Corridors

Projects as of September 28, 2010

### Legend

- Solar Energy Facilities
- Wind Energy Facilities
- State Boundary
- BLM Field Offices
- California Desert Conservation Area Boundary
- County Lines
- DWMA
- ACEC other than DWMA

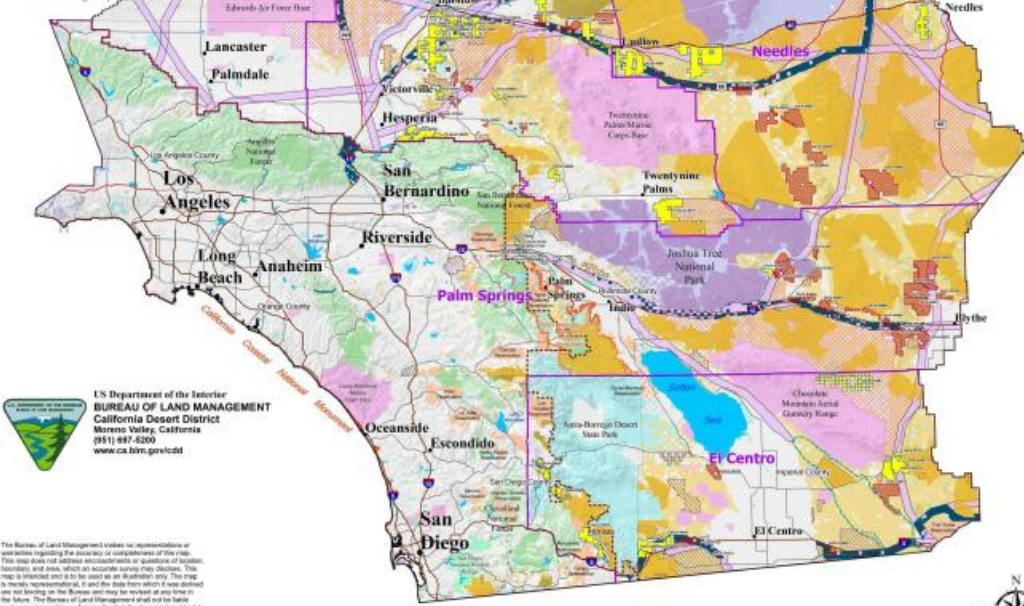
- BLM Wilderness
- NPS Wilderness
- USFS Wilderness
- BLM Wilderness Study Areas
- National Monument Boundary
- Imperial Sand Dunes Recreation Area Management Plan
- CDD Designated Utility Corridor
- Section 368 Utility Corridor

### Land Status

- Bureau of Land Management
- US Forest Service
- National Park Service
- Bureau of Reclamation
- US Fish and Wildlife Service
- Military
- Indian Trust Assets
- Other Federal
- State
- County/State/Regional
- Private/Other
- Perennial Water

### Roads

- Interstate Highway
- State Highway
- U.S. Highway



US Department of the Interior  
**BUREAU OF LAND MANAGEMENT**  
 California Desert District  
 Mojave Valley, California  
 (951) 897-6200  
[www.ca.blm.gov/cdd](http://www.ca.blm.gov/cdd)

The Bureau of Land Management makes no representations or warranties regarding the accuracy or completeness of this map. This map does not address encroachments or questions of location, boundary, and area, which are accurate surveying devices. This map is intended only to be used as an illustrative tool. The map is merely representative, and the data from which it was derived are not binding on the Bureau and may be revised at any time in the future. The Bureau of Land Management shall not be liable under any circumstances for any direct, indirect, special, incidental or consequential damages with respect to any claim for any use of any data from this map or arising from the use of this map or any data from which it was derived.

This map cannot be made Section 508 compliant. For help with its data or for more information, please contact the BLM California State Office at (916) 678-6911.



Desert District:  
 45 next generation solar applications

Desert District:  
 46 next generation wind applications





# Northern California District Offices

Renewable Energy Projects and Utility Corridors  
Projects as of September 28, 2010

## Legend

Wind Energy Projects

State Boundary

BLM Field Offices

County Lines

National Monument Boundary

ACEC

BLM Wilderness

NPS Wilderness

USFS Wilderness

BLM Wilderness Study Areas

Section 368 Utility Corridors

## Land Status

Bureau of Land Management

US Forest Service

National Park Service

Bureau of Reclamation

US Fish and Wildlife Service

Military

Indian Trust Assets

Other Federal

State

County/State/Regional

Private/Other

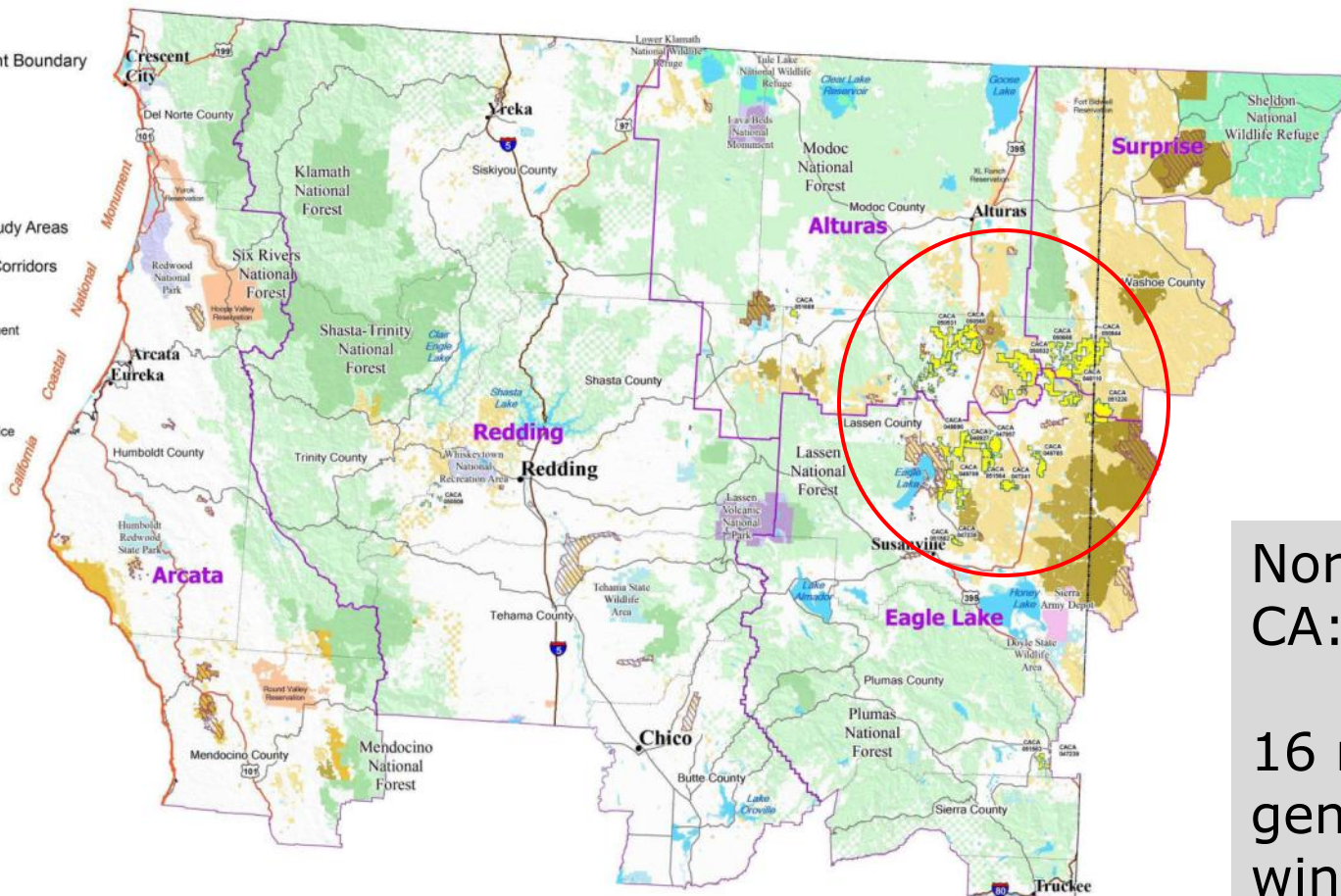
Perennial Water

## Roads

Interstate Highway

State Highway

U.S. Highway



Northeastern  
CA:

16 next  
generation  
wind  
applications

# Thank you! Questions?

Ashley Conrad-Saydah

[aconrad@blm.gov](mailto:aconrad@blm.gov)

916-978-4636



Wikipedia Commons

