

Global Threat – Local Impact: Maryland Perspectives on Climate Change and Health

Leading into 2050: Building Resilience for Health, Climate & Biodiversity

April 27, 2021

Amir Sapkota, PhD
Professor

University of Maryland School of Public Health
amirsap@umd.edu



SCHOOL OF
PUBLIC HEALTH

Weather Service: BWI witnessed “between a 500 year and 1,000 year rainfall”

August 12, 2014

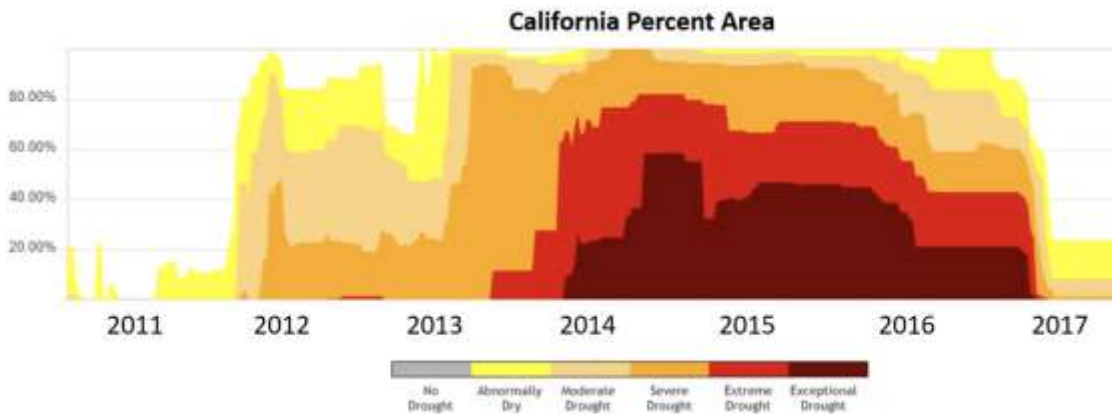
CNN politics 2020 Election Facts First Election 101

WATCH LIVE

Testimony in the trial of ex-police officer Derek Chauvin

Inhofe brings snowball on Senate floor as evidence globe is not warming

By Ted Barrett, CNN
Updated 2:38 PM EST, Fri February 27, 2015



<https://droughtmonitor.unl.edu/>

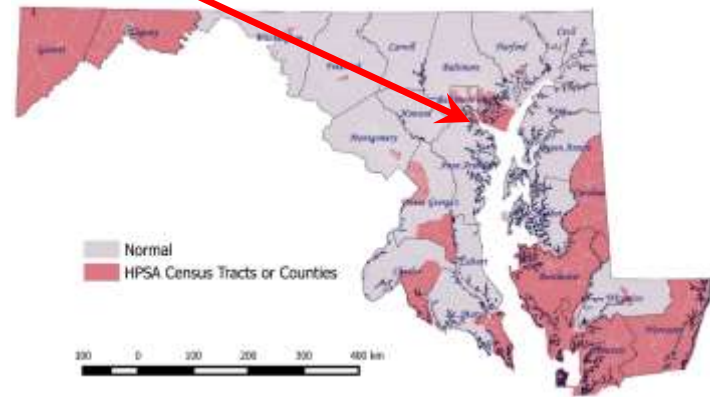
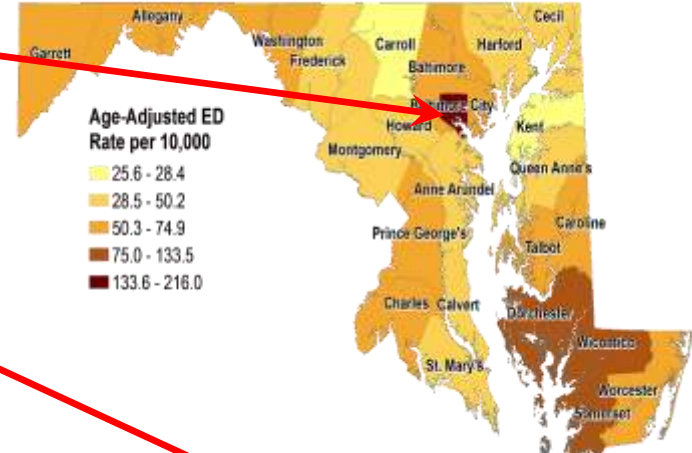
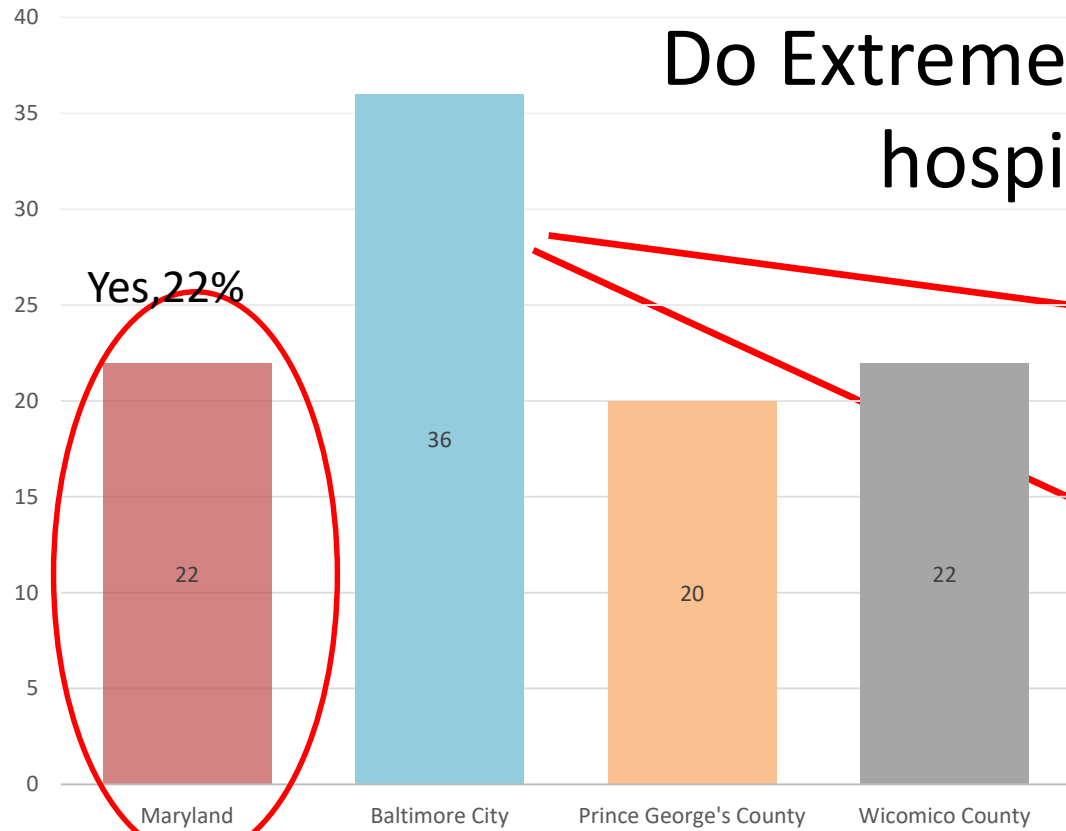
years flood'

Maryland Gov. Larry Hogan late Sunday night declared a state of emergency in what he called a “once-every-1,000-years flood.”



SCHOOL OF
PUBLIC HEALTH

Do Extreme Heat Events increase asthma hospitalization in Maryland?



Soneja et al. *Environmental Health* (2016) 15:57
DOI: 10.1186/s12940-016-0142-z

Environmental Health

RESEARCH

Open Access

Exposure to extreme heat and precipitation events associated with increased risk of hospitalization for asthma in Maryland, U.S.A.

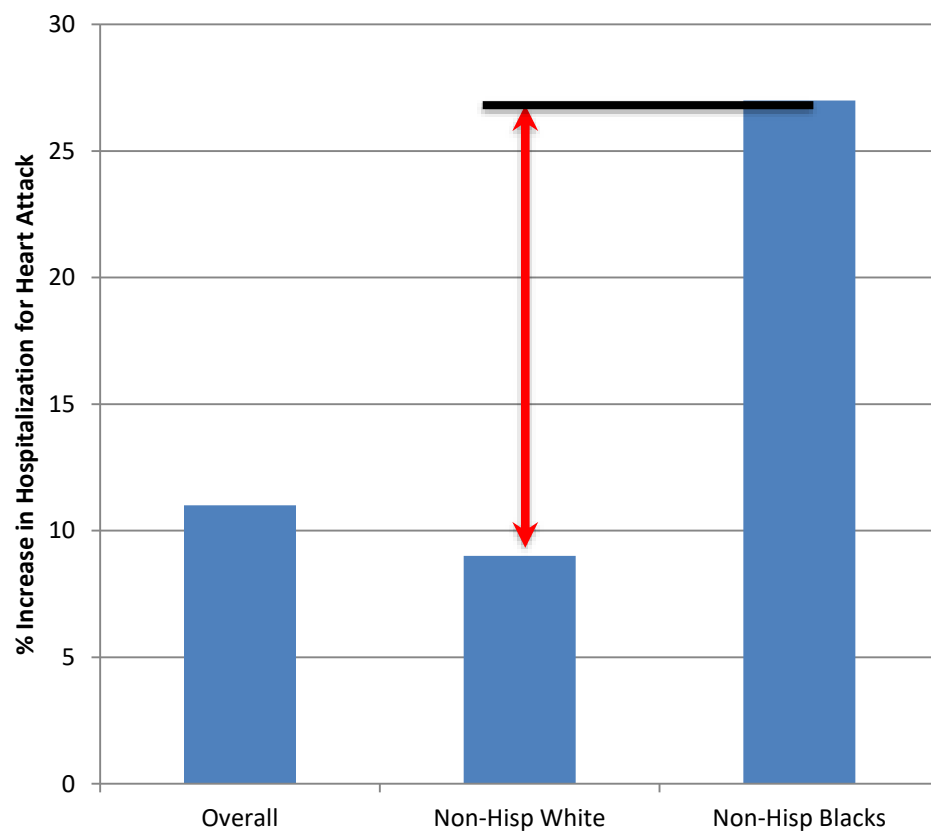


Sutyajeet Soneja¹, Chengsheng Jiang¹, Jared Fisher², Crystal Romeo Upperman³, Clifford Mitchell³ and Amir Sapkota^{1*}



SCHOOL OF
PUBLIC HEALTH

Extreme Heat Events and Risk of Hospitalization for Heart Attack



Journal of Exposure Science and Environmental Epidemiology (2017) 27, 276–280
© 2017 Nature America, Inc., part of Springer Nature. All rights reserved 1559-0631/17
www.nature.com/jes

ORIGINAL ARTICLE

Summertime extreme heat events and increased risk of acute myocardial infarction hospitalizations

Jared A. Fisher^{1,2}, Chengsheng Jiang¹, Sutyaheet I. Soneja¹, Clifford Mitchell³, Robin C. Puett^{1,2} and Amir Sapkota¹

■ Series1

Heat Wave Affecting People Around Baltimore

June 12, 2017 11:42 PM By Ava-joye Burnett

Filed Under: Heat Wave



BALTIMORE (WJZ) — The **extreme** of heat has doctors worried that some people may not take it seriously. The moment you step outside, you feel the heat.

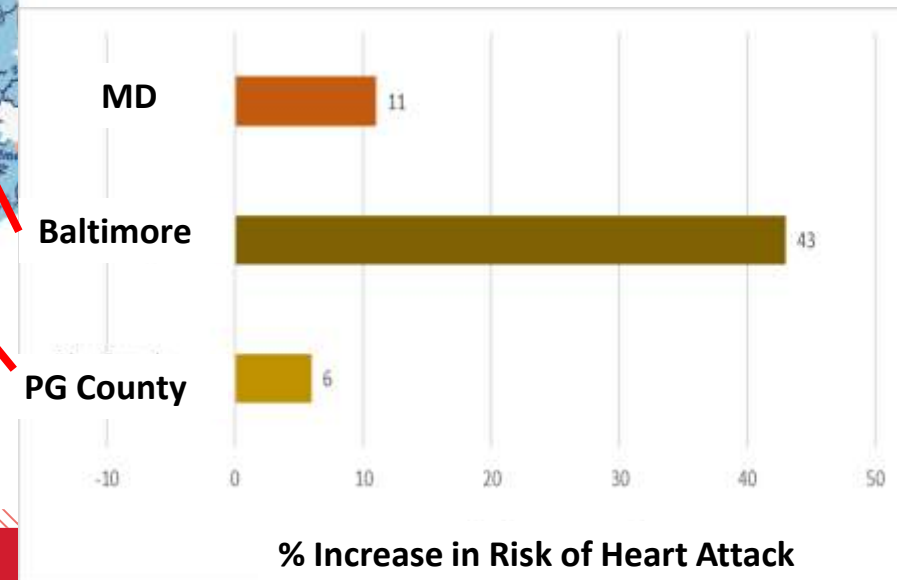
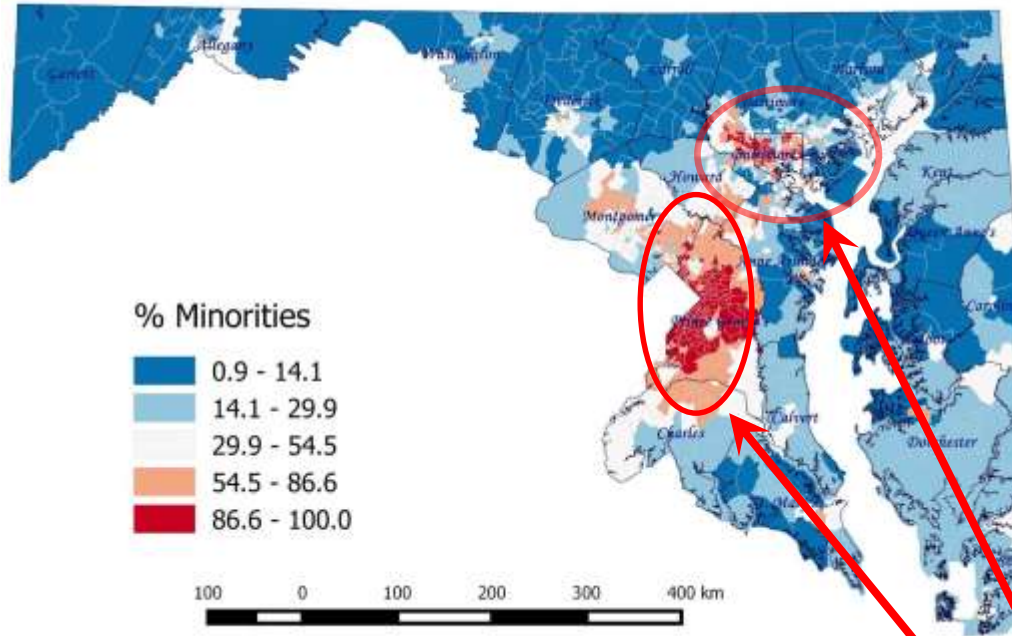
Ava-joye Burnett explains why the **heat** mixed with the humidity could be a deadly combination.



SCHOOL OF
PUBLIC HEALTH

*Fisher et al. Journal of Exp Sci and Env.
Epidemiology 2016*

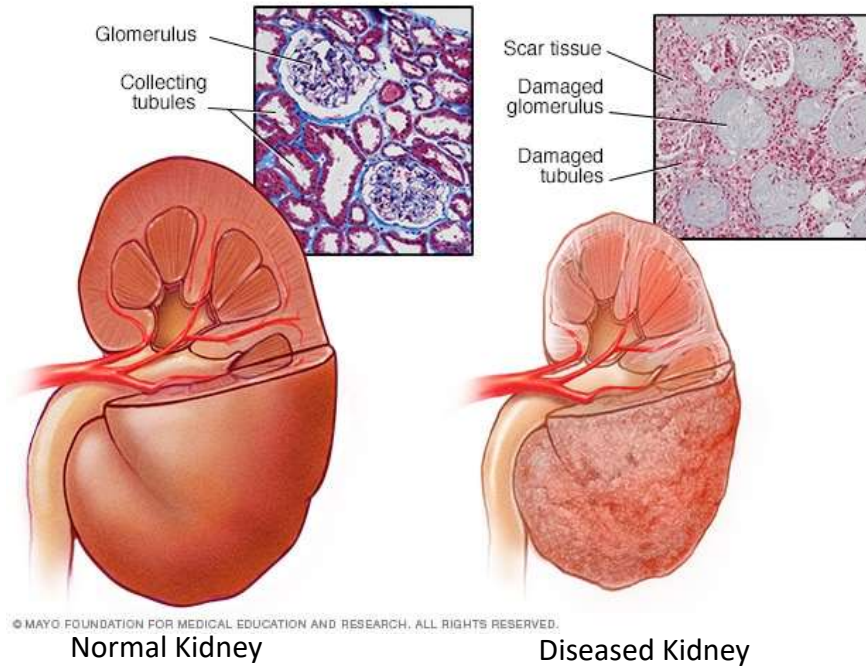
Is the risk of EHE related heart attack higher in counties with higher proportion of minority population?



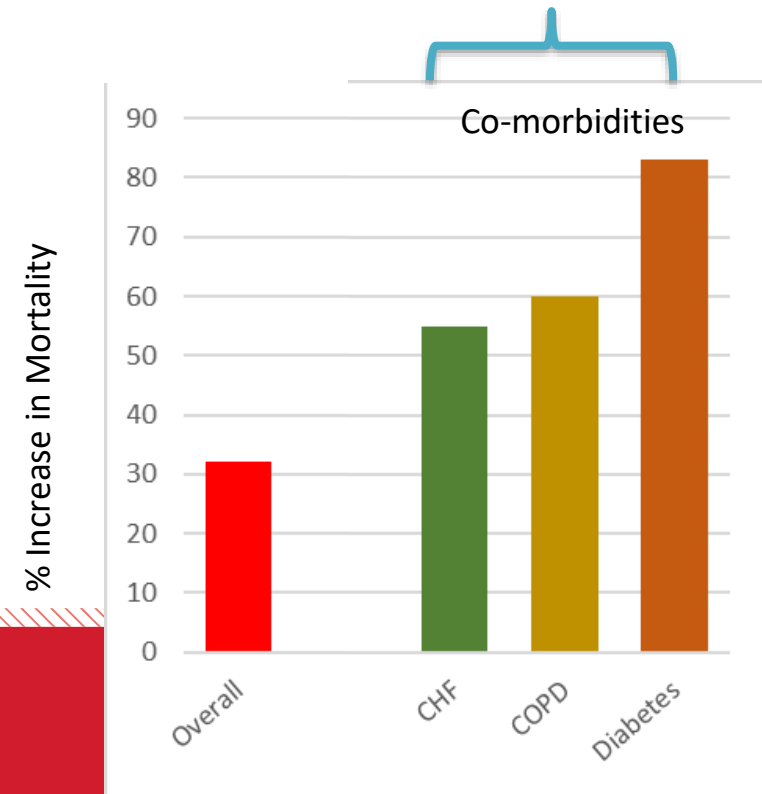
Original Investigation | Nephrology

Association of Extreme Heat Events With Hospital Admission or Mortality Among Patients With End-Stage Renal Disease

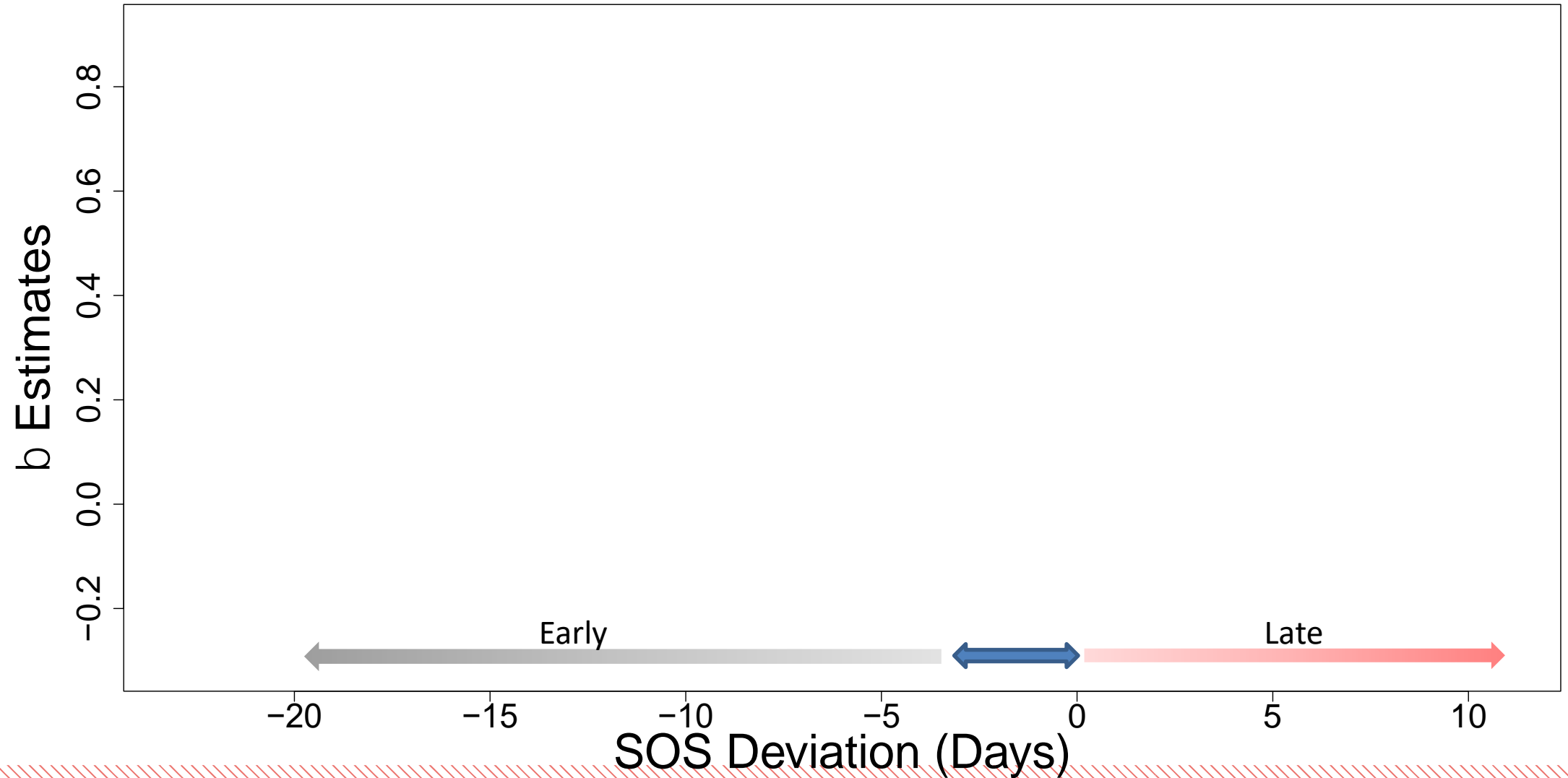
Richard V. Remigio, MPhil, MS; Chengsheng Jiang, PhD; Jochen Raimann, MD, PhD, MPH; Peter Kotanko, MD; Len Usvyat, PhD; Frank W. Maddux, MD; Patrick Kinney, ScD; Amir Sapkota, PhD



Risk of Mortality from Extreme Heat Among End-Stage Renal Disease Patients



Changes in Timing of Spring Onset and Asthma Hospitalization



Moving Forward

- Paradigm shift: Anticipate hazard and prepare for it.
- Enhance community resilience - Early warnings, with seasonal to sub seasonal lead time.
- Example : AWARD-APR

Enhancing community resilience against threats of diarrheal diseases in the Asia Pacific Region

