



ENVIRONMENTAL LAW
& POLICY CENTER

ELI Summer School: Environmental Justice

Kiana Courtney

Environmental Law & Policy Center, Staff Attorney

Overview

- Background - Miami
- EJ in Chicago
- Coalition Building
 - Miami
 - Coal Ash Pollution in IL
 - Air Quality Chicago
 - #StopGeneralIron #DenythePermit
- Cumulative Impacts Analysis

Community Lawyering

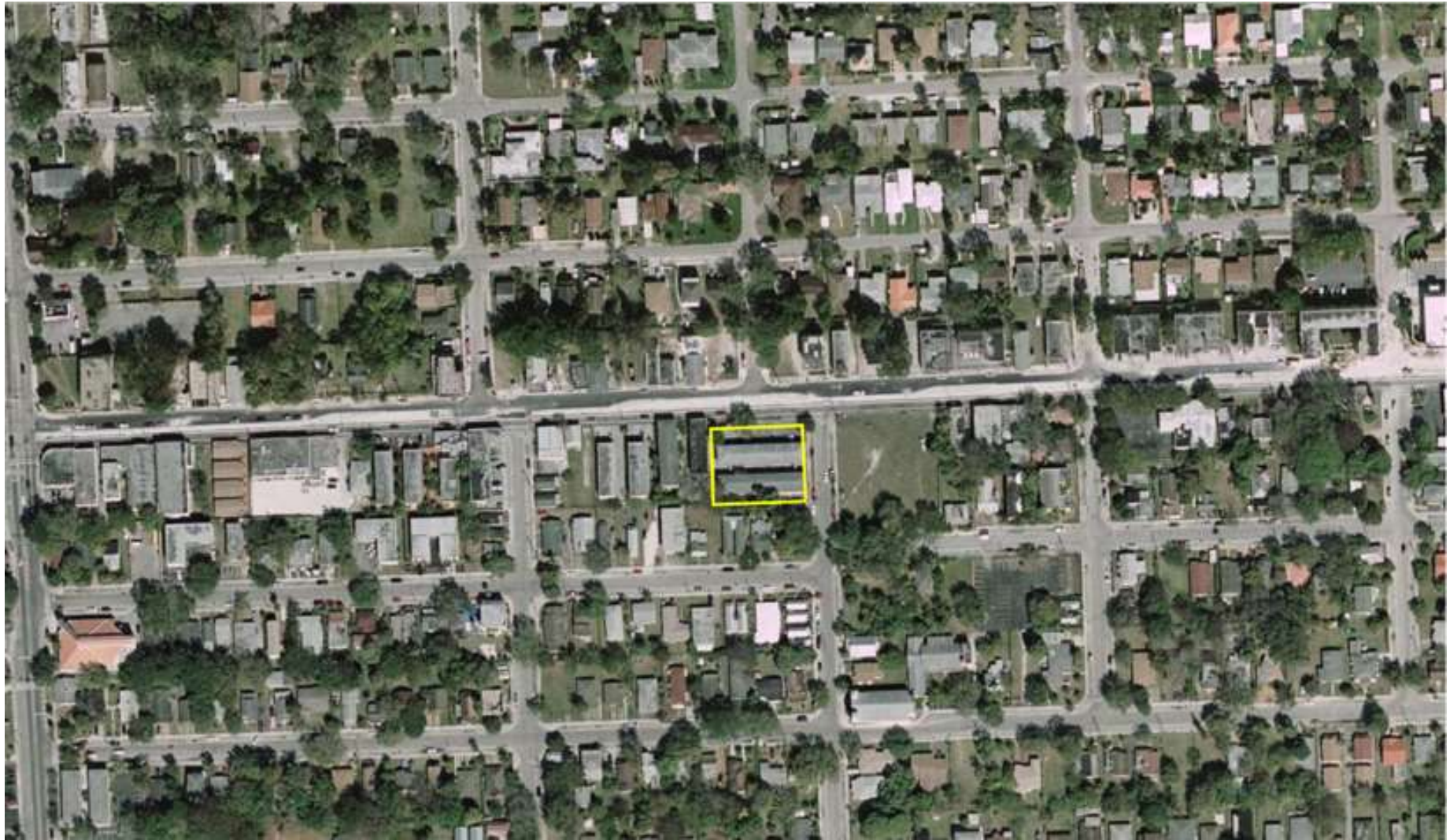
- Uses legal advocacy to build the power of communities to challenge and eradicate these systems of inequality
- Tacticians in the struggle for change → not saviors or gatekeepers
- Aims to transfer knowledge and skills to organizers and clients
- Expand the collective knowledge base of client orgs

Source: Community Justice Project

Environmental Justice in Miami



2005

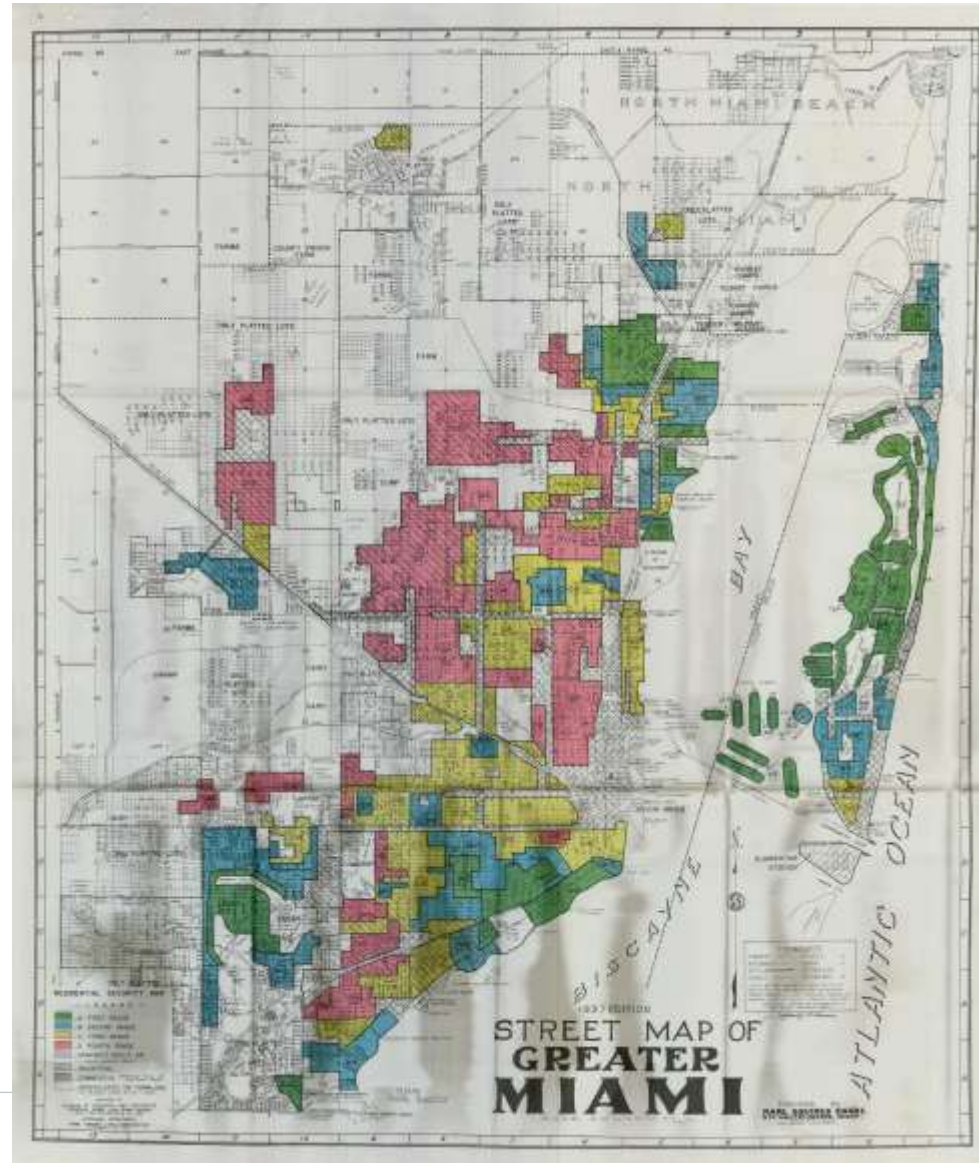


Source Google Earth – Environmental Justice Clinic – UM Law

2016



HOLC Map of Miami



Cumulative Impacts

Environmental Characteristics

- Particulate Matter 2.5 (PM2.5)
- Ozone
- Diesel Particulate Matter
- Air Toxics Respiratory Hazard Index
- Air Toxics Cancer Risk
- Lead Paint Indicator
- Traffic Proximity
- Proximity to Superfund (National Priority List) Sites
- Proximity to Risk Management Plan Facilities
- Proximity to Treatment Storage Disposal Facilities
- Wastewater Discharge Indicator

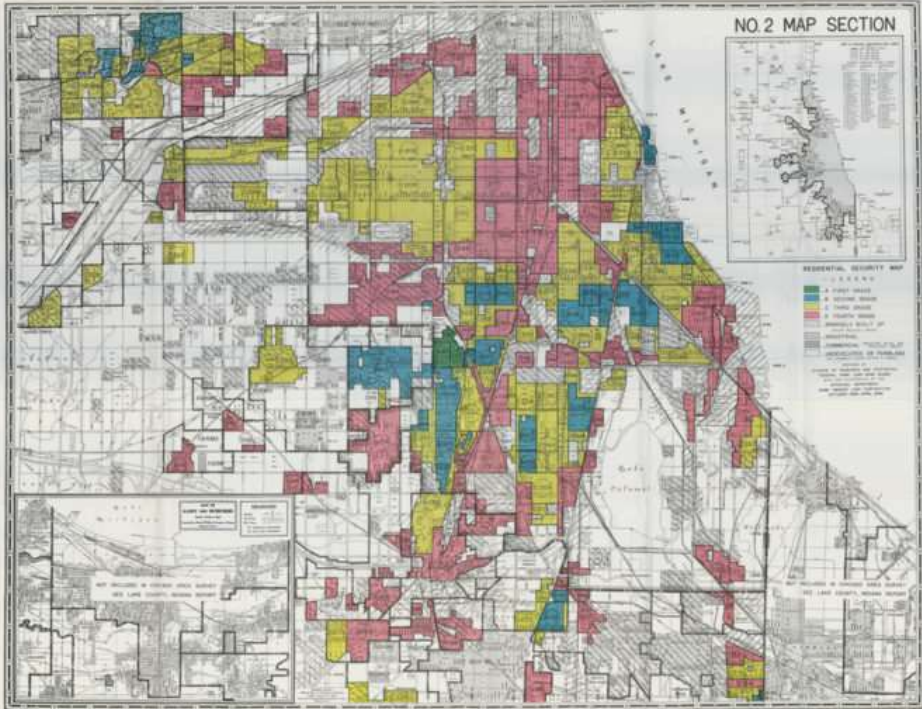
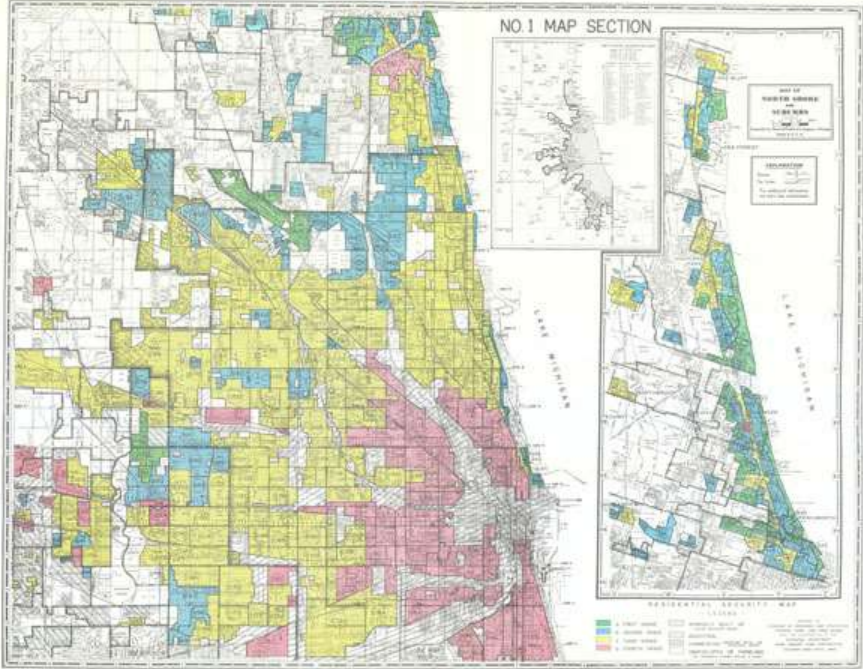
Sociodemographic

- Low income
- “Minority” percentage
- Less than high school education
- Linguistic isolation
- Children under age 5
- Adults over age 64

Others

- Varies by state
- E.g. MD includes myocardial infraction & low birth rate infants; MI - blood lead levels

Chicago Redlined



Source: Mapping Inequality Project

Air Quality Chicago Project

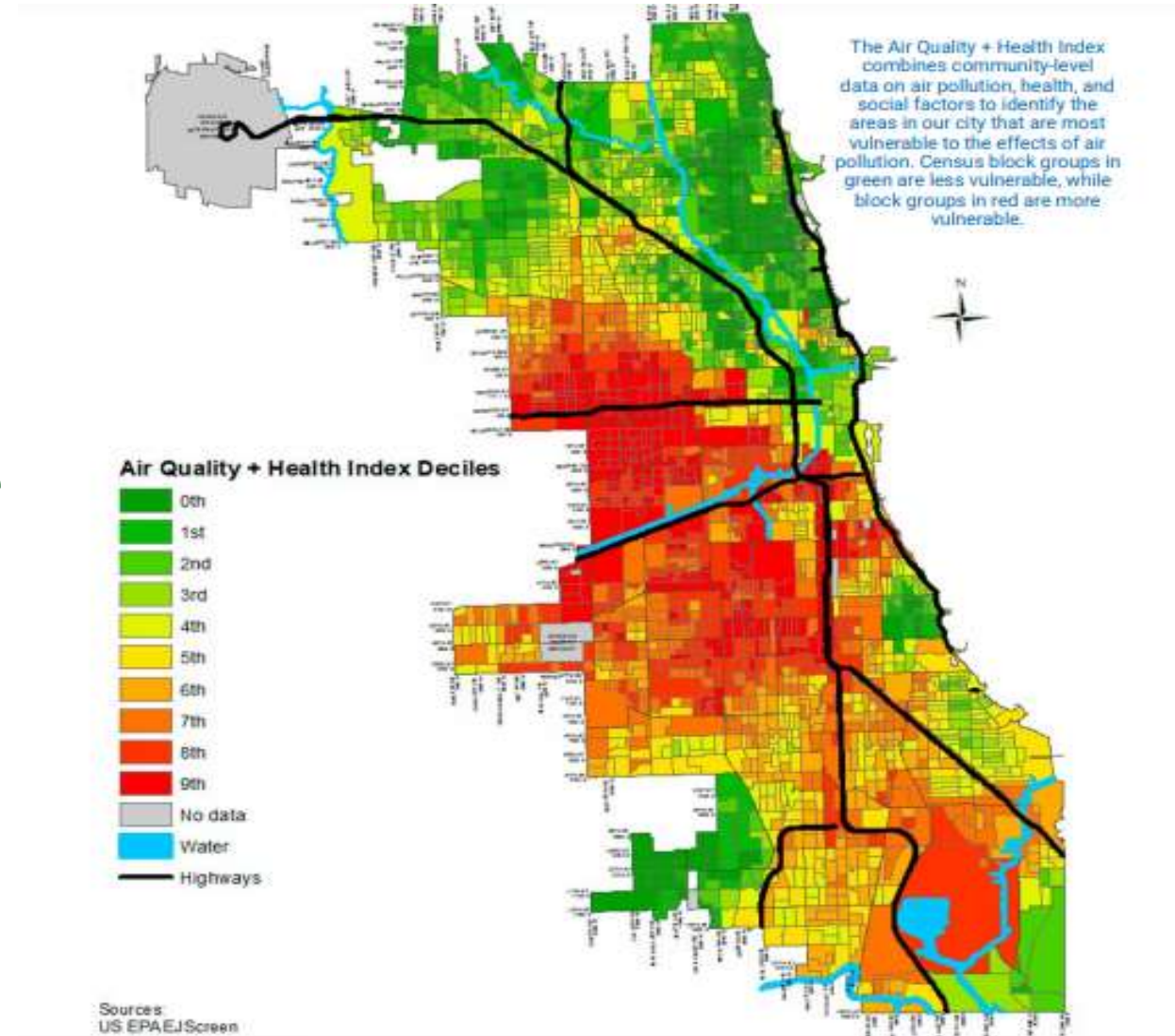


Air Quality & Health Across Chicago

Other + Health + Social Factors

- Asthma prevalence
- COPD prevalence
- Coronary Heart Disease prevalence
- Low birth weight
- Young age
- Old age

- Unemployment
- Housing burdened low income households



Source: Chicago Dept of Public Health Air Quality & Health Report 2020

#StopGeneralIron Campaign



Photo credit –WTTW and WBBM News

Coalition Building

- Old Smokey: churches + neighborhood groups → class action lawsuit + organizing + documenting



Source Google Earth – Environmental Justice Clinic – UM Law

Coalition Building

- AQ monitoring: classrooms, youth organizations, community-based organizations, community members, bike shops, etc. → gathering data + education + solutions-building



Coalition Building

- Stop General Iron: organizers & community members (the real experts in EJ) + CBOs + big greens → public pressure & actions w/ escalation tactics (hunger strike) & speaking out at national meetings + comments on permits → other fights against additional pollution sources



Cumulative Impacts Mapping, Analyses, Legislation

- California
- New Jersey
- Chicago
- Other

Why Biden's EPA chief stepped into a Chicago permit controversy

Michael Regan tells the Sun-Times the agency is taking a hard look at “some of the more egregious cases” where low income neighborhoods of color are environmentally burdened — like the Southeast Side.

By Brett Chase | May 27, 2021, 8:04pm CDT

[f](#) [twitter](#) [SHARE](#)

