

**JUSTICE &
EQUITY
IN THE AGE OF
EMERGENT
STRATEGY**

JULY 30, 2019

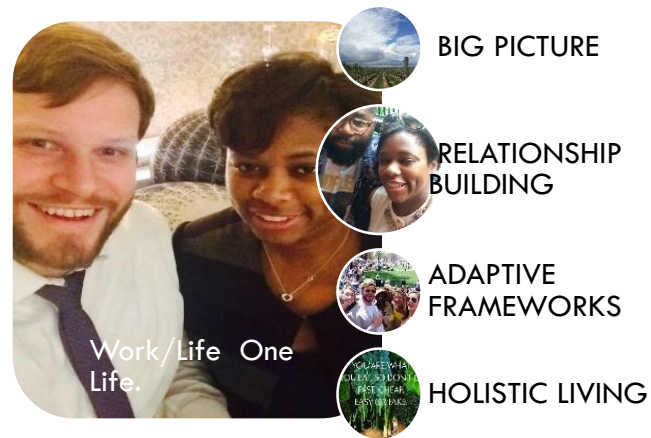
Tamara
Toles O'Laughlin

WHO AM I ? – A BRIEF INTRODUCTION

CORE VALUES



FRAMEWORK



SPHERES



WHAT DO I DO?—WORK ACROSS LINES I DID NOT DRAW, ON SYSTEMS NOT SYMPTOMS.



GREEN LEADERSHIP TRUST

Builds a more powerful movement by **harmonizing and aligning** the impact and leadership of people of color and indigenous people serving on environmental, non profit boards.



To inspire and empower women to become leaders for the environmental community through educational and professional development opportunities **by inviting and including women of color in every activity.**



Amplifies women's voices to eliminate the toxic chemicals that harm our health and communities.

WHAT DO I DO?—WORK ACROSS LINES I DID NOT DRAW, ON SYSTEMS NOT SYMPTOMS.



The Air and Climate Public Advisory Committee (ACPAC) advises air quality, climate and energy issues to policy committees of the Metropolitan Washington Council of Governments (COG). ACPAC advises the Metropolitan Washington Air Quality Committee (MWAQC) on air quality planning and the Climate, Energy, and Environment Policy Committee (CEEPC) on climate and energy issues and initiatives.



The Mitigation Working Group supports the charge of the state Climate Commission with a focus on regulatory, market-based and voluntary programs to reduce greenhouse gas emissions while supporting economic development and job creation.

THE WORK

Building a
multiracial,
multigenerational,
identity conscious
Global Grassroots
Climate Movement
to hold our leaders
accountable to
science and justice.



**Why do we need
political action
to protect
people and the
planet?**





ENVIRONMENTAL JUSTICE

Timeline/Background

- 1968-1982 Public Mobilization for Environmental Justice
- 1983-1990 Federal/EPA Definition provides a limited explanation of how the government could support environmental justice
- 1991 National People of Color Environmental Leadership Summit- EJ Principles



ENVIRONMENTAL JUSTICE

Timeline/Background

- 1994 President Bill Clinton's Executive Order #12898
- 1996 Southwest Network for Environmental and Economic Justice,
- 1996 Jemez Principles of Democratic Organizing
- 1998 The Wingspread Statement/Precautionary Principle
- 2011 Maryland Environmental Standing Act (enhanced)

ENVIRONMENTAL JUSTICE

The Wingspread Statement/Precautionary Principle

“When an activity raises threats of harm to the environment or human health, precautionary measures should be taken even if some cause and effect relationships are not fully established scientifically.”



US POLICY

- Clean Water Act
- Safe Drinking Water Act
- Clean Air Act
- Comprehensive Environmental Response, Compensation and Liability Act
- Toxic Substances Control Act

Even with the most robust set of environmental laws ever constructed we have not solved basic questions of environment and health.

- Highways AND air pollution.
- Climate Change, flooding AND mold.
- Barber Shops/Beauty Salons AND toxic exposures.
- Equal access to grocery stores, museums or park space in every zip code.

EMERGENT FRAMING: ENVIRONMENTAL JUSTICE

working definition:

Meaningful and informed engagement, early and often, with impacted people and decision making bodies, as long term partners, for the purpose of determining a fair distribution of benefits, and, if any, acceptable burdens.

EJ OPERATIONAL FRAMEWORK

Equity

in the distribution of benefits and burdens among all residents.

Access

to decision makers at a time when their actions can inform a process rather than merely provide observations on the impact of an action.

Justice

the realization of the highest potential of each and all without the weight of structural barriers or biases.

UNSOLICITED OPINION:
CORPORATE BODIES CANNOT DO JUSTICE WORK. THEY
CAN SUPPORT IT VIA A FOCUS ON EQUITY.





Equity

MY FRAMING: EQUITY

Working Definition

Equity as a practice involves habitual refocusing of **resources and norms** to support those persons, communities, and groups at risk of harm in a given action **AND** shifting policies, practices and activities to avoid those harms.



EJ v Equity

(Human Bodies v Corporate Bodies)

What does the introduction of clean, renewable energy infrastructure do naturally to increase justice, equity or enjoyment of nature? E.g.

- **Hydropower**
- **Wind**
- **Solar**
- **Storage**



Inherently. . .nothing.

EQUITY & JUSTICE LENS

Equity, Fairness, Just Transition must be informed by the experience of concentric stakeholders and followed by intentional action that incorporates their directive.

Why?

What we promote or we devalue in our policy and practice impacts the health of generations.

HUMAN HEALTH
IS IMPACTED BY
BY FEDERAL &
STATE ENERGY
PRIORITIES &
INVESTMENTS.

Political Questions of Environment & Human Health

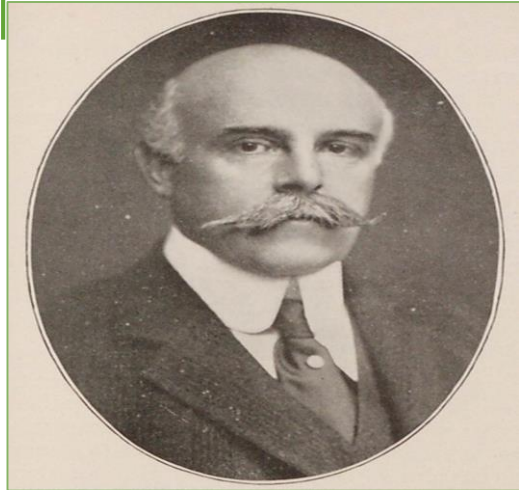
- What is a just transition through a lens of human health?
- Should Congress explicitly commit to shifting away from fossil fuels? When? On what basis?
- Should federal regulation shift in response to growing demands for Offshore Wind to take begin in the US on of its shoreline?
- Should energy generated in the US stay in the US?
- Should impacted communities have a say in when, where and how energy is produced in the state?

|

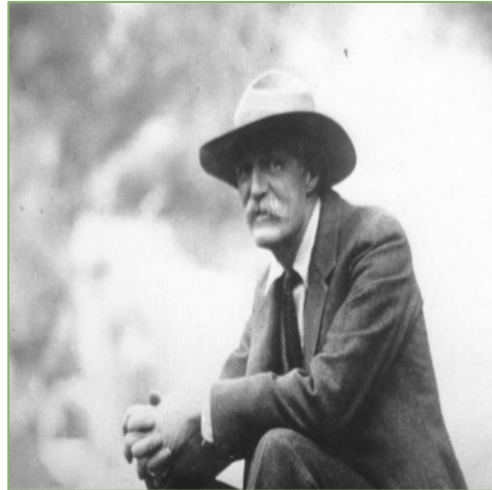
**What's
missing from
the story?**



PAST: GREEN IS WHAT?



Madison Grant, 1887 is known less for his conservationist efforts than for his book “The Passing of the Great Race, or The Racial Basis of European History,” a pseudo-scientific work of white supremacy.



Gifford Pinchot, the country’s foremost theorizer and popularizer of conservation, was a delegate to the first and second International Eugenics Congress, in 1912 and 1921, and a member of the advisory council of the American Eugenics Society, from 1925 to 1935.



John Muir, working, consuming, occupying, and admiring American nature was a way for a certain kind of white person to become symbolically native to the continent. He also publicly derided and degraded indigenous people as a part of his iconic narrative and worldview.

EQUITY: ALL THINGS ARE NOT EQUAL

The Indian Removal Act May 28, 1830

Peter Burnett Lash Law. 1844

The Homestead Act
May 20, 1862

Jim Crow Laws 1877-1967

The Chinese Exclusion Act of 1882

Dawes Severalty Act
February 8, 1887

The Immigration Act of 1924, The Johnson-Reed Act.

Racially Restrictive Covenants 1920s–1948 (nationwide) prevention of people of color from purchasing homes in white communities.

The Serviceman's Readjustment Act of 1944, G.I. Bill
Housing Provisions

EQUITY & JUSTICE LENS



Equity, Fairness, Just Transition must be informed by the experience of concentric stakeholders and followed by intentional action that incorporates their directive.



Why?



What we promote or we devalue in our policy and practice impacts the health of generations.

ROOT CAUSES

RACIST STANDARDS

CULTURAL NORMS OF
OPPRESSION

SILENCED SCIENCE
ON CUUMULATIVE
IMPACTS

(FALSELY)
AGGRESSIVE LIMITS
ON RESOURCES
SUPPORTING ALL OF
THE ABOVE



How do we
respond to a
growing chorus
of the righteous
and the right
now?



**GREEN NEW
DEAL:
JOBS
INFRASTRUCTURE
PEOPLE**



EQUITY & JUSTICE

Assumptions

No community, group or people should bear an outsized burden of environmental threats, ecological manipulation or be excluded from decisions that determine their future for any reason, particularly for profit.

Poverty is not biological it is a function of design.

EQUITY & JUSTICE LENS

Avoids negative consequences/impacts including:

Jobs: Accelerated Unemployment or Underemployment

Pollution: Rapid and unsustainable shifting of ecosystem conditions

Public Health: Agency and localized choice which increases health and well being

PROGRESS ON EQUITY & JUSTICE

New Paradigm

Powershift/Powershare:

Recognize and accept cultural difference, leadership styles, expertise and engage in participatory valuation of land and natural resources.

Recognize that money can be an imperfect or inadequate form of compensation.

Advocate for restorative justice policy and procedures that recognize and respond to all of the above.

PRACTICE MAKES PROGRESS ON EQUITY & JUSTICE

Tools

Health Impact Assessments

Environmental Justice Review/Evaluation

Environmental Fiscal Impact Assessment

Eco-Economy Policy Modelling

- Non-Energy/Community Benefit Protocol
 - Organic Infrastructure Redesign

PRACTICE MAKES PROGRESS ON EQUITY & JUSTICE

Global Climate Strike → Sep. 20–27

Got plans?

Get in touch if you want support to make the moment matter where you live/love. It's time for the mass melanization of the movement to make our communities resilient and whole.

<https://globalclimatestrike.net/>

STAY IN TOUCH :

Email: tamara@350.org

Phone: 443-863-5275

Web: tolesolaughlin.com

Twitter@Tamaraity

