



How's My Waterway : Introduction

Telling the Water Story

Purpose

Provide the public with usable, meaningful information

Communicate progress states, tribes, and EPA are making towards restoring or protecting water quality

Engage the public in understanding impacts on water and issues related to water



Some Building Blocks: How's My Waterway 1.0

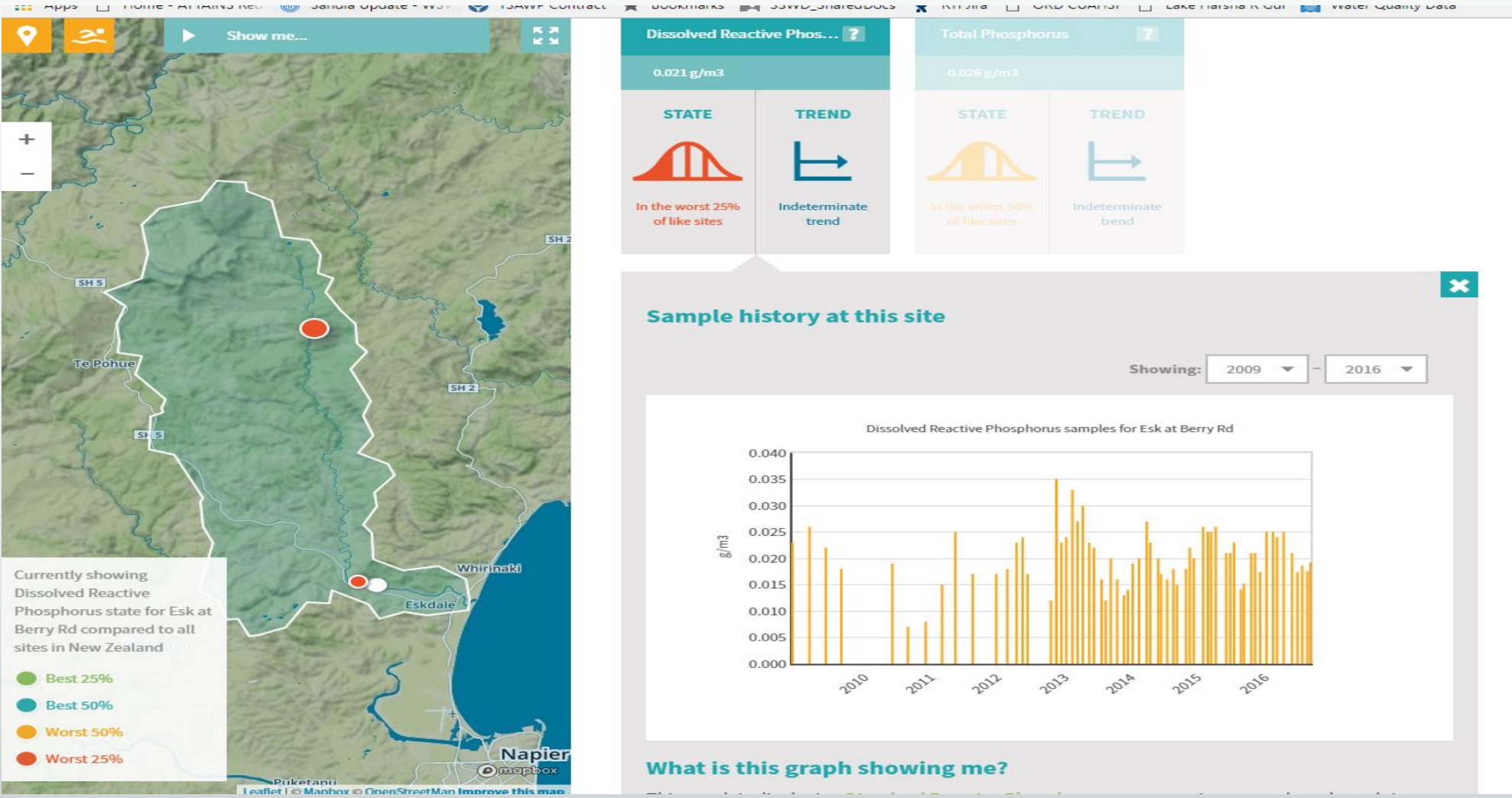
- “Mobile First” Design
- Simple non-technical language

The screenshot shows the EPA mobile app interface. At the top, the EPA logo and 'United States Environmental Protection Agency' are displayed. Below the header, the title 'How's My Waterway?' is followed by 'Waters Nearest 22554, VA'. A notice states: 'Notice: Newer State assessment information may exist that hasn't been mapped or provided to EPA.' Below the notice are two tabs: 'Search Results' (selected) and 'Other Water Info'. A 'Show Map' button is located below the tabs. The search results are listed in a table:

	Unnamed Waters ASSESSED 2010 / UNPOLLUTED	0.07Mi
	Austin Run ASSESSED 2010 / POLLUTED 2010	0.78Mi
	Unnamed Waters UNASSESSED / CONDITION UNKNOWN	1.26Mi
	Aquia Creek ASSESSED 2010 / POLLUTED	1.96Mi

The screenshot shows the map view of the EPA mobile app. At the top, the EPA logo and 'United States Environmental Protection Agency' are displayed. Below the header, the title 'How's My Waterway?' is followed by 'Waters Nearest 22554, VA'. The map shows the search area with various waterways and roads. A black box highlights the search area. Map controls are visible on the left side, including zoom in (+), zoom out (-), and a location pin icon. On the right side, there are 'Map Options' and 'List' buttons. The map is powered by Esri, as indicated by the logo in the bottom right corner. At the bottom of the screen, there are links for 'EPA Home | Privacy | Contact'.

Other Influences: LAWA – New Zealand



Design Concepts

- All information is based on a service
- Tell the story at multiple levels (National, State, County, Local)
- Integrate data across systems
- Allow for in-depth stories in addition to interactive content

- 📍
Community
 Overview
- 🥛
Drinking Water
 How is my community's drinking water?
- 🎣
Recreation
 How can I stay healthy fishing & swimming?
- 🐢
Ecological Life
 How does our water impact ecological life?
- ⚠️
Potential Issues
 What puts clean water at risk?
- 🧪
Detect
 Is the water being tested?
- 🔄
Restore
 What is being done to restore our water?
- 🛡️
Protect
 How can I help?

Community

Water Connects us. Thanks to the Clean Water Act, the EPA, states, tribes, volunteer groups, and organizations work together to monitor water quality. This information is shared with the states and the EPA to help protect and restore our Nations Waters.

Your Waters: What We Know

The outline on the map shows your local sub-watershed or HUC 12.

1

Drinking Water Provider

26

Monitoring Stations

■ Show on map

174

Permitted Dischargers

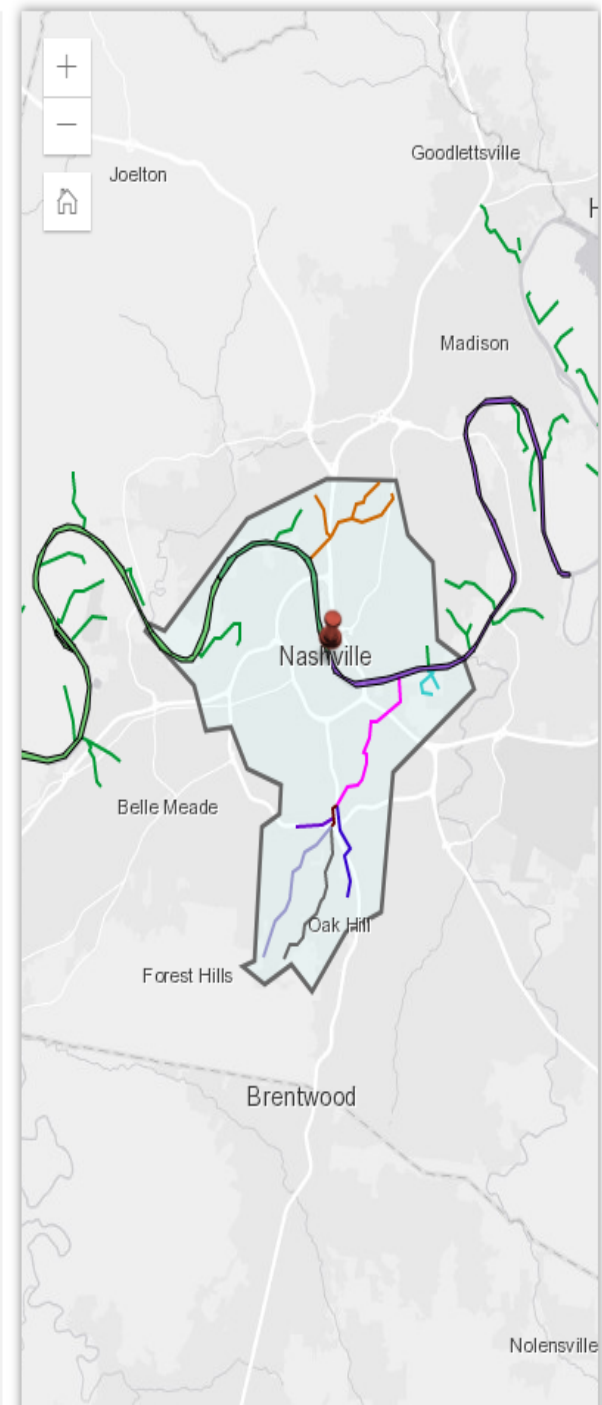
■ Show on map

Water Quality Assessments were conducted for:

- ✓ fish, shellfish and wildlife protection
- ✓ fishing, swimming and boating
- ✓ agricultural use
- ✓ drinking water
- ✓ industrial use

Show waterbodies on map [Hide Full Legend](#)

Waterbody Name	Color in Map	Condition	Cause of Impairment(s)
<i>Click to view on map</i>			



DEMO