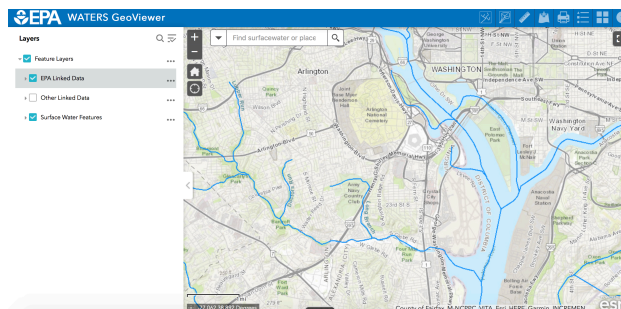


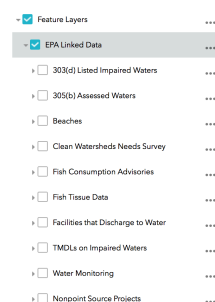
# EPA Office of Water WATERS GeoViewer


## What is the WATERS GeoViewer?

The EPA Office of Water's Watershed Assessment, Tracking and Environmental Results System (WATERS) integrates water-related information by linking it to the NHDPlus stream network. The National Hydrography Dataset Plus (NHDPlus) provides the underlying geospatial hydrologic framework that supports a variety of network-based capabilities including upstream/downstream search and watershed delineation. The WATERS GeoViewer provides easy access to these data and capabilities via the Internet on any desktop or mobile device using a supported web browser.



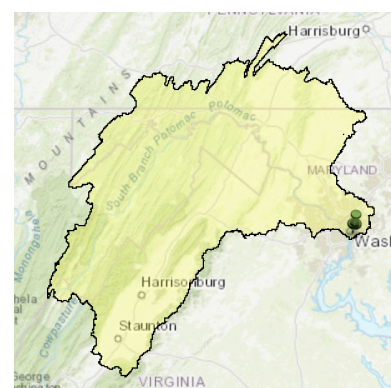
## What data can be found in the WATERS GeoViewer?



In addition to NHDPlus features such as streams and waterbodies, the WATERS GeoViewer contains EPA-linked data such as monitoring stations, 305(b) assessed waters, 303(d) impaired waters, TMDLs, nonpoint source projects, beaches, and more. StreamCat attributes can be accessed for each stream in the tool. Users can also add their own GIS data from a URL or a file using the Add Data (  ) button.

## What can the WATERS GeoViewer Do?

In addition to displaying NHDPlus and EPA-linked data, the WATERS GeoViewer has upstream/downstream and watershed delineation tools. The upstream/downstream tool can be used to find linked data at a defined distance from a user-defined point, such as looking for facilities that discharge to water upstream of an impaired water. The watershed delineation tool displays the upstream or downstream watershed to a defined extent from a user-defined point.



## Where can I get more information?

An overview of the tool can be found at <https://www.epa.gov/waterdata/waters-geoviewer>

A tutorial on how to use the tool can be found at <https://www.epa.gov/waterdata/waters-geoviewer-tutorial>